

TRUST NEWS

JUNE - JULY 1993

VOLUME 93 - 5

13 CRAIGEND STREET KINGS CROSS 2011

TEL 331 5655

PO BOX 845 KINGS CROSS 2011

PRIVILEGE BOOKING SERVICE

TELEPHONE CAROL MARTIN FOR HER USUAL EXPERT AND PERSONAL SERVICE ON THE TRUST'S NUMBER 331 5655

TP Trust Price GP General Public Price
 \$2.00 HANDLING FEE PER TICKET [PLUS (IF APPLICABLE) \$2.20
 TICKETEK FEE], AND \$1.00 POSTAGE AND MAILING.
 COURIERS EXTRA.

FORTHCOMING PRODUCTIONS

THE BLUES BROTHERS SHOW

Metro Theatre, 624 George Street, Sydney

Starring Russell Crowe and Simon Westaway

Now, after an astounding run in London's West End, and a wad of reviews that are nothing short of unanimously glowing, the Paul Dainty Corporation in association with David Pugh, brings "the official tribute to the Blues Brothers" to Australia. Now, more than ever, it's time to let the good times roll....

Playing from Thursday July 22nd for a limited season

Tues to Thurs - 8 pm Fri & Sat - 8 pm and 11 pm Sun - 5 pm

TP \$33.90 (Tues to Thurs - 8 pm); (Fri & Sat 11 pm)

\$43.90 (Fri & Sat - 8 pm); (Sun - 5 pm)

GP \$37.90 (Tues to Thurs - 8 pm); (Fri & Sat - 11 pm)

\$43.90 (Fri & Sat 8 pm); (Sun - 5 pm)

BARMAIDS by Katherine Thomson

Playhouse Theatre, Sydney Opera House

Starring Noeline Brown and Joan Sydney

Winner of the 1992 Australian Writers Guild Awgie Award. Barmaids is set in a hotel bar where Val and Nancy entertain, and put down and caution their male customers.

"The fun night out of the year."

Playing from Wednesday July 21st

Mon to Sat - 8 pm Mats: Wed - 1 pm; Sat - 2 pm

TP \$30.50 (Mon to Thurs Eves and Mats)

\$37.50 (Fri and Sat Eves)

GP \$37.50 (Mon to Sat Eves & Mats)

"Early Bird Special" - attend any performance from Wednesday July 21st to Saturday August 7th and receive a further \$5.00 off every seat.

Trust News is published by the Australian Elizabethan Theatre Trust ACN 008 394 250 to which Mr John Lord has been appointed scheme administrator. Every effort is made to ensure that all information is correct at the time of printing but the Trust accepts no responsibility for the accuracy of the information herein. All enquires 331-5655.

**FOR ONLY \$40
 ANNUAL MEMBERSHIP, EVEN
 MORE GREAT SAVINGS
 IN THIS ISSUE ALONE**

Show	Trust Member's Discount	Total Savings (2 tickets)
------	-------------------------------	---------------------------------

Looking Through

a Glass Onion	\$ 5.00	\$10.00
---------------	---------	---------

Barmaids	\$ 7.50	\$15.00
----------	---------	---------

M Butterfly	\$ 5.00	\$10.00
-------------	---------	---------

Hot Shoe Shuffle	\$ 5.00	\$10.00
------------------	---------	---------

Les Belles De Paris	\$15.00	\$30.00
---------------------	---------	---------

Showboat

Dinner Cruise	\$18.00	\$36.00
---------------	---------	---------

Jake's Women	\$ 3.00	\$ 6.00
--------------	---------	---------

Dinkum Assorted	\$ 5.00	\$10.00
-----------------	---------	---------

Joseph and His Amazing

Technicolor

Dreamcoat	\$11.20	\$22.40
-----------	---------	---------

A Swell Party	\$ 6.00	\$12.00
---------------	---------	---------

Brilliant Lies	\$ 3.00	\$ 6.00
----------------	---------	---------

Cinemas:

Hoyts	\$ 2.50	\$ 5.00
-------	---------	---------

Village	\$ 2.50	\$ 5.00
---------	---------	---------

Greater Union	\$ 2.50	\$ 5.00
---------------	---------	---------

\$182.40

Why pay the full price for theatre and cinema tickets, when you can be a Trust member and be eligible for these huge potential savings. No need to wait in queues, tickets are just a telephone call away. Tell your friends to join today. Just call Carol Martin on 331-5655

REPLACEMENT CARDS

When a member renews his/her membership a new card is issued with an up-dated renewal date.

Because of the number of people who seem to be either misplacing or losing their new card, it has been decided to charge a \$2.00 replacement fee. This fee is to cover the new laminated card, an envelope and postage stamp.

M. BUTTERFLY by David Henry Hwang
Presented by Harry M Miller and the Melbourne Theatre Company
Seymour Centre (York Theatre)
Starring Robert Grubb

This exciting new play is not Madame Butterfly the Opera, but a rivetting, provocative new play based on the true story of Bernard Boursicot a French Diplomat, and Shi Peipu a Chinese opera singer, who were sentenced to six years in jail for spying for China in 1986. The two-day trial traced the story of clandestine love and mistaken sexual identity, and the case was the talk of Paris, not so much because of the charge of spying itself, as because of the circumstances.

Playing Tuesday July 6th to early September
Mon to Sat 8 pm Mats: Wed - 1 pm; Sat - 2 pm

TP \$33 (Mon to Sat Eves & Mats)

GP \$38 (Mon to Sat Eves & Mats)

**SHOW AND CHAMPAGNE SUPPER
NIGHT FOR TRUST MEMBERS AND
THEIR FRIENDS**

M. BUTTERFLY

Friday July 2nd, 1993 at 8 pm

At the Seymour Centre
(York Theatre)

Why not join us for a preview of this sizzling new play of love, espionage.... and betrayal.

Supper will be held in the upper foyer area of the Seymour Centre after the performance.

Cost per person \$40.00 show and supper combined

**LOOKING THROUGH A GLASS
ONION**

Seymour Centre (Everest Theatre)

Starring John Waters

A kaleidoscopic collage of song, word, emotion and image exploring the essence of John Lennon, and what makes him more than a 20th Century rock star.

Playing Tuesday June 29th to Saturday August 7th
Mon to Thurs - 8 pm Fri - 7 pm & 9.30 pm

Sat - 5.30 pm and 8 pm

TP \$24.80 (Mon to Fri Eves & Sat 5.30 pm)
\$32.80 (Sat - 8 pm)

GP \$29.80 (Mon to Fri Eves & Sat - 5.30 pm)
\$32.80 (Sat - 8 pm)

ABSENT FRIENDS by Alan Ayckbourn
Marian Street Theatre, Killara

A group of old friends meet and offer tea and sympathy to recently bereaved Colin. But can they really help?

Diana won't shut up, Marge won't leave well enough alone, Evelyn wants to be left alone, Gordon can't be left alone, and John won't sit down. A bitter sweet comedy about relationships.

Playing Friday July 30th to Sunday September 12th

Tues to Fri - 8.15 pm Sat - 8.30 pm

Mats: Wed - 11 am; Sat & Sun - 5 pm

TP \$28 (Tues to Fri Eves & Mats)

\$34 (Sat Eves)

GP \$30 (Tues to Fri Eves & Mats)

\$34 (Sat Eves)

BRILLIANT LIES by David Williamson

Sydney Theatre Company/Sydney Opera House
(Drama Theatre)

Sydney season cast to be announced

A new comedy from Australia's leading playwright, about survival in the 90's where you have got to be lucky, rich, or able to tell brilliant lies.

How high can the stakes go, from an initial accusation of inefficiency in the workplace, to a clash where only one party can win? How far can the brilliant liar go?

Playing from Tuesday September 21st to Saturday November 6th

Mon to Sat - 8 pm Mats: Weds - 1 pm; Sat - 2 pm

GP \$32 (Mon to Thurs Eves)

\$35 (Fri and Sat Eves)

GP \$35 (Mon to Sat Eves)

TP & GP \$26 (Wed Mats); \$28 (Sat Mats)

SUMMER OF THE ALIENS

by Louis Nowra

Sydney Theatre Company/Wharf Theatre

This richly evocative play explores the Australia of the early sixties, with a host of vividly drawn characters that contribute to a young boy's rite of passage from childhood dreams to adult knowledge.

Playing from Wednesday August 11th to Saturday September 25th

Mon to Sat - 8 pm Mats: Weds - 1 pm; Sat - 2 pm

TP \$32 (Mon to Thurs Eves)

\$35 (Fri and Sat Eves)

GP \$35 (Mon to Sat Eves)

TP & GP \$26 (Wed Mats); \$28 (Sat Mats)



THE AUSTRALIAN
ELIZABETHAN
THEATRE TRUST
ACN 008 394 250

PATRON

HER MAJESTY THE
QUEEN

HON LIFE GOVERNOR
SIR IAN POTTER

CHAIRMAN
LLOYD WADDY

BOARD
F.M. HOOKE
DEPUTY CHAIRMAN (NSW)

JESSICA DAMES (SA)

BRIAN LARKING, FCA (NSW)

LADY POTTER, AO (VIC)

RODNEY SEABORN,
OBE (NSW)

JAMES STRONG (NZ)

LEONARD TEALE, AO (NSW)

JUDY WHITE
(NSW COUNTRY)

FORMED IN 1954
TO FOSTER THE ARTS
IN AUSTRALIA
BY AUSTRALIANS
FOR AUSTRALIANS

EXTRACTS FROM 1992 ADDRESSES

PRESENTED TO THE ANNUAL GENERAL MEETING 31ST MAY 1993



THE AUSTRALIAN ELIZABETHAN THEATRE TRUST

REMINDER : 30th June Approacheth!

YOUR TRUST HAS A TAX DEDUCTIBLE FUND

IT NEEDS REGULAR DONATIONS,

OR WE MAY LOSE IT ...

The AETT which is a registered charity, now has its own tax-deductible fund. Since 18 December, 1992 the Australian Elizabethan Theatre Trust Public Fund has been entered on the Register of Cultural Organisations and entitled to receive unconditional gifts deductible under section 78 (1)(a) of the Income Tax Assessment Act.

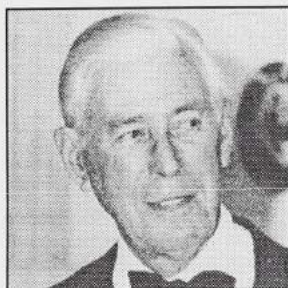
Next year the Trust will be 40 years old. Starting from a nil balance on 3rd August, 1992, we had accumulated assets of \$137,851 by 31st December, but only by hard work and honorary administration. This cannot continue indefinitely and we must recapitalise the Trust and make it strong again.

Will you please consider a tax deductible gift to your Trust this financial year? As we approach the new century the Trust will be needed more than ever. Please help as much as you can: the number of gifts and size of donations are both important.

I hope to hear from you soon!

Lloyd Waddy

L.D.S. Waddy, RFD, QC
Chairman



Sir Ian Potter - President

1993 marks the fortieth year of my association with The Australian Elizabethan Theatre Trust. Next year it will be the 40th anniversary of its foundation in 1954.

I well remember the enormous enthusiasm generated by Dr. Coombs' vision, shared by so many others, to create an Australian theatre in Australia, by Australians and for Australians. A great deal of money was raised and expended on that worthy objective.

Those promoting the Trust capitalised on the visit of H.M. The Queen to Australia in 1954 and hoping for an explosion of artistic endeavour in Australia similar to that in England under Elizabeth I, adopted with Her Majesty's consent, the name "Elizabethan" in our title. Her Majesty has continued her personal patronage of the Trust ever since.

Here is no place to recount the history of the Trust, but it is a proud achievement to have exercised a seminal influence in so many cultural areas. The last three companies nurtured and seen off to independence were the Theatre of the Deaf, Performing Lines (devoted to new Australian works) and the Bell National Shakespeare Company.

In 1991 the directors of the Trust sought the Federal Court's appointment of a provisional liquidator. From the time of his appointment Mr.

Extracts From The President's Report

Year Ended 31 December 1992

John Lord worked assiduously to allow the Trust to continue, to maximise the possible returns to creditors, and to maintain the employment of key personnel.

Due to his inspiration and encouragement and the indefatigable work of several directors of the Trust, the Federal Court approved a Scheme of Arrangement unanimously adopted by the Trust's creditors, and the directors resumed day-to-day control of the company on 3 August, 1992.

The Trust has been extremely heartened by the widespread public support it has received. The honorary assistance that members of the public have volunteered and the letters of appreciation and good wishes have buoyed up the morale of the Board and the staff in their efforts to have the Trust re-establish a useful role in the cultural life of the nation.

However, in this exciting rebirth of the Trust it is salutary to note the generosity of those who have made it possible, including the *honorary* services of Mr. John Lord of Duesburys, Mr. Michael O'Neill of Corrs Chambers Westgarth and Mr. Clive Sergeant of Arthur Andersen who completed the audit free of charge. Similarly, the Trust will always be indebted to those directors who personally contributed to the Scheme Fund, Mr. Larking, Lady Potter, Dr. Seaborn, and Mr. Waddy (\$10,000 each), Mr. Strong, the former Chairman and Mr. Hooke, the Deputy-Chairman. Their financial contributions were also essential to the viability of the Scheme of Arrangement. A further debt of gratitude is due to Dr. Seaborn, who made available rent-free premises during the period of provisional liquidation enabling the Trust to maintain

limited operations, and to our loyal staff, Jose Calarco who runs Halftix, Miss Carol Martin who runs the Privilege Booking Service and Miss Barbara Costen who administers the Superannuation Funds and Membership. Their loyalty to the Trust through its most difficult period was exemplary: the Trust is very lucky to have such able and dedicated permanent staff.

I am bound to endorse the comments of the Chairman and Honorary Chief Executive Officer of the Trust, Mr. Waddy, that for the present time honorary administration ought to continue. The Trust is indebted to him for his constant efforts to see a Scheme of Arrangement successfully in place, and for his skilful honorary administration of the Trust on a day-to-day basis since 3 August, 1992. The operating profit of \$113,000 is a splendid testimonial to his assiduity and dedication.

Now that the Trust is again able to receive unconditional gifts for its own use into its public fund, may I invite all who value the Trust and what it stands for in the arts to consider a generous tax deductible gift to help with its re-establishment. Today, more than ever, we need the Trust with its charter for the arts of Australia, by Australians for Australians. Even in times of economic stringency it is well for us to nourish the nation's soul as well as deal with all its other problems. May we count on you?

In this, my last report as President, I wish you all every blessing in your future work in the Trust.

Ian Potter
President



Mr Lloyd Waddy, RFD, QC - Chairman

Extracts From The Chairman's Report

Year Ended 31 December 1992

I am pleased to report that Halftix is now soundly re-established and although starved of development funds has, I believe, a great future of service to the public.

Membership

As all assets, including life memberships' and members' annual subscriptions were retained by the Scheme Administrator as part of the Scheme Fund, we commenced with no balance to service our members. We have since honoured all life memberships and provided all members (as at March, 1991, the date of the provisional liquidation) who reside in NSW with copies of Trust News.

It has been very pleasing to have reports of members' enthusiasm for the 'new look' Trust News.

The ready support of our 1,000 annual members who have paid their subscriptions is eloquent testimony to the usefulness of the Trust. Miss Barbara Costen and Miss Carol Martin are both to be congratulated on the splendid effort, together with our volunteers, that has been put into revitalising our membership base and encouraging new members at a time of great financial stringency in the community.

Privilege Booking Service

Carol Martin's 'baby' is the telephone booking service the Trust provides for its members. I totally recommend Carol's mastery in producing fabulous tickets - the best available.

We decided to rename the Service to reflect what it is - a real Privilege for our members - and it has won great patronage. Just lift the telephone and speak to Carol and she does the rest through her Privilege Booking Service!

Carol has also initiated theatre par-

ties for Trust members and I highly recommend them to all members. At reduced prices for tickets and a champagne supper, it is a great way to watch a fabulous show and enjoy a party (often with the cast) afterwards.

Superannuation

The trustees nominated by the Trust for our two continuing superannuation funds are Mr. Frank Hooke and Mr. Leonard Teale. Styled the 'Performers' Fund' and the 'Staff Fund' they have needed extensive attention from the trustees, and are managed by the AMP Society. Day-to-day administration has fallen on the able shoulders of Miss Barbara Costen.

Accommodation

Your Board elected to remain in the premises to which the Trust's activities had been moved by the Provisional Liquidator. 13 Craigend Street, Kings Cross, which almost adjoins the Stables Theatre. Since 3rd August, the Trust has incurred a commercial rental for the premises, which Dr. Seaborn allowed to be paid in arrears to assist our cashflow. Again, we are greatly indebted to his generosity.

The Costume Shop

Your Board re-negotiated the contract with The Costume Shop. Payments are reflected in the accounts and members receive a 10% personal discount for costumes hired, with an equivalent sum being paid to the Trust. Augmented by the stunning Seaborn Broughton Walford Foundation Costume Collection, The Costume Shop now offers a fabulous array of costumes to members of the Trust and the public and individually manufactured costumes on order. Your Board has been proud to assist in the re-constitution of this essential service to the arts in Sydney.

Chalwin Estate

At the time of writing this report sums are still held by the stakeholders whilst the formality of the agreement between the Trust and the Solicitor General (acting on behalf of the Attorney General for NSW) are recorded in a Deed of Trust. No money will come to the Trust's general funds, but a special Chalwin Trust is to be created where the corpus will be kept intact, and the income applied to "the sustenance of the arts, music and culture" by the Trust, specific applications being subject to the Deed or as the Attorney General may from time to time approve.

Your Board wishes to record its grateful thanks to Mrs. Thomson and Mrs. Dorsman for their generosity. We publicly affirm our resolve to honour the name of the late Vivian James Chalwin in the application of the Fund.

It may be noted that Chalwin Castle, where Mr. Chalwin had entertained so many Trust members in his private theatre, has since been totally demolished after sale.

Tax Deductibility on Unconditional Gifts to the Trust

As from 18th December, 1992 the Trust has, in common with many other arts bodies, been approved by the Treasurer and the Minister for Arts and Territories for the AETT Public Fund to be listed on the Register of Cultural Organisations, enabling it to receive tax deductible donations under section 78(1)(a) of the Income Tax Assessment Act 1936.

Whilst the Trust itself can receive testamentary gifts, the Public Fund cannot, and the Public Fund must "be open to and regularly receive donations from the public". Finally, donors to the Public Fund must not "receive any advantage of a material character by way of return - e.g., discounted tickets to performances, etc." nor benefit relatives by donations to the fund.

Regular Tax Deductible Donations Requested

In view of the fact that if our Public Fund is not "open to the public" and

"regularly" receiving donations from the public, the Trust may lose the facility, may I encourage each of us to make a gift to the Trust *regularly*, no matter how small the amount?

Sir Ian Potter

Under a new provision for Honorary Life Governors, the first is our President, Sir Ian Potter.

Sir Ian Potter's name first appears in the Minutes of the Trust in October, 1954 and he has made a remarkable contribution to the life of Australia and to the Trust and its efforts for the arts ever since. His sagacity and financial acumen are legendary.

Through the Potter Foundation the Trust has benefited greatly from Sir Ian's philanthropy. Having personally witnessed Sir Ian's dedication to the Trust (and his contribution to the national opera and ballet companies and the Elizabethan Sydney and Melbourne orchestras) I can say without hesitation that no one's contribution over the last quarter century has matched his. We wish him a very happy retirement (if he ever does retire!) and a long association with the Trust as its first Honorary Life Governor.

Honorary Life Memberships

Your Board has had the pleasure of confirming on your behalf honorary life memberships on the following retiring Governors: Mr. Doug Billington (NSW), Mr. K.A. Conlon (SA), Mrs. Shirley Hay (NSW, previously confirmed), Mr. Robert Holden (VIC), Sir Bruce Macklin, OBE (SA), Dr. Jon Sainken (WA).

We record with gratitude their services to the Trust in their various States, and thank them for their loyalty and support in difficult times. We also record our thanks to Mr. John Kerrigan who has rendered great service to the Trust over a long period.

Volunteers

The Board of the Trust is of course honorary and unpaid. Whilst the efforts of directors come to notice at each Annual General Meeting, members may wish to thank our band of volunteers who help man our office daily at 13 Craigend Street.

Future Policy

The Trust has begun its renaissance with a sound financial result. However, the trading profit is modest and the operating profit of \$113,000 is of such a size as to indicate that honorary administration will be requisite until the Trust is recapitalised. I am very happy to carry this on whilst I enjoy the confidence of the Board and whilst I am able to perform it adequately. However, it is my advice that the Trust endeavour to recapitalise itself.

I therefore intend to lead by example and contribute regularly to the Public Fund, and I earnestly commend to each member the needs of the Trust at this time.

Next year will be our 40th Anniversary and by then I hope that a due assessment of the Trust's contribution to the cultural life can be made at a time when the Trust is again seen as a generous friend to such companies as request its help or expertise.

It has been a guiding principle of mine for the Trust to do only that which we are asked to do or that which we do on our own account. In general I see the role of the Trust in the immediate future as building Australian support for the arts in Australia and encouraging and developing opportunities for and a due appreciation of the magnificent artistic skills in our multicultural, hybrid and very vibrant society.

By force of circumstance our efforts must first consolidate our base in Sydney and New South Wales. But many people from all over Australia will find the Trust of assistance, and we prize our interstate links and have preserved our existing interstate Board membership, extending reciprocal rights to those bodies which have replaced the Trust interstate.

I believe the Trust can now go from strength to strength if we tread cautiously and trade wisely. I have the honour to commend this report to you all.

Lloyd Waddy, RFD, QC
Chairman



HALFTIX - AN AETT SERVICE

How do I know what shows I can go to for half price?

- *Ring 0055-20580 daily after 11 a.m.
- *Listen to 2BL between 11.30 and noon each day.
- *Read blackboard daily at Halfix Booth.

Where is the Halfix Booth?

In the centre of Martin Place between Elizabeth and Castlereagh Streets.

How do I get the half-price tickets?

I go to Halfix Booth, Martin Place between noon and 5pm to buy the vouchers.

How do I get my seats?

I exchange the vouchers at the theatre for the best available seating.

What do I save?

Half the price of the tickets (less handling fee).

When is the booth open?

9 - 5 daily Mon - Fri, with half price tickets on sale from noon each day, and Sat noon - 5pm.

Is that all I can book?

No, you can book for any aspect of Australian culture - art galleries, theatre restaurants, harbour cruises, coach tours, circuses and many other entertainments - all at half price.

Is Halfix open to Trust members?

Yes, of course! - But for reservations in advance, Trust members do better to contact Carol Martin on 331 5655, (PO box 845 King's Cross 2011).

How do I join The Trust?

Send name, address and phone number, plus a cheque for \$40, to AETT or join by phone 331 5655 giving credit card details!

What else can I book at Halfix booth?

All preferential bookings in advance at general public prices through our General Ticketek agency at the same booth.

HOW TO GET THE BEST OUT OF THE TRUST

Want to enjoy the Trust's stupendous savings?

Want the best available seats for any show?

Want to avoid queues for tickets?

Want to avoid long waiting on the telephone?

Want to collect tickets personally?

Want to have tickets couriered to you?

Want to collect tickets at the Box Office?

Want seats for the football, cricket, Sydney Kings etc.?

Want a group booking for your friends?

Want tickets for Phantom?

Want tickets for Pop Concerts?

For all these services, ring the Trust 331-5335

Want Halfix half price seats on the day of the show?

Visit the Halfix Booth, Martin Place

Want a 10% discount on hiring costumes for parties or plays?

For the best rates in Sydney Trust members go to

The Costume Shop, 7th Floor, 61 Marlborough Street

Surry Hills or phone 281 2044 and claim their Trust

Member's 10% discount!

How do I pay for the Trust's services?

Bankcard, Mastercard, cheque or cash (Halfix: cash only).

How much can I save?

The best the Trust can negotiate.

What does the Privilege Booking Service cost me?

\$2 handling fee per ticket; plus, (if applicable), \$2.20

Ticketek fee; and \$1 postage and mailing (or courier at cost) if requested.

Can my friends join?

Yes, if I give them a gift or they apply.

What does Trust membership cost per year? **Only \$40**

TRUST MEMBERSHIP - THE PERFECT GIFT

AUSTRALIAN ELIZABETHAN THEATRE TRUST

ACN 008 394 250

TAX DEDUCTIBLE DONATION FORM ARTS IN AUSTRALIA BY AUSTRALIANS FOR AUSTRALIANS

ENQUIRIES: (02) 331 5335

THE CHAIRMAN

AUSTRALIAN ELIZABETHAN THEATRE TRUST

P.O. Box 845

KINGS CROSS 2011

☐ YES! - I DO WANT TO HELP REBUILD THE TRUST!

☐ YES! - I CAN GIVE TO THE TAX DEDUCTIBLE AETT PUBLIC FUND

MY UNCONDITIONAL GIFT TO THE TRUST IS ENCLOSED.

☐ \$10 ☐ \$25 ☐ \$50 ☐ \$100 ☐ \$500 ☐ \$1,000 OTHER \$.....

PLEASE SEND MY TAX DEDUCTIBLE RECEIPT TO ME.

PLEASE PRINT:

NAME.....

ADDRESS.....

POSTCODE.....

TELEPHONE..(.....).....SIGNED.....

AUSTRALIAN ELIZABETHAN THEATRE TRUST

ACN 008 394 250

NEW MEMBER / GIFT MEMBERSHIP FORM

TELEPHONE: 331 5655

MS CAROL MARTIN

AUSTRALIAN ELIZABETHAN THEATRE TRUST

P.O. Box 845

KINGS CROSS 2011

☐ YES! - I WANT TO JOIN THE TRUST AND ENJOY ITS BENEFITS AND SAVINGS.

☐ YES! - I WANT TO GIVE A GIFT MEMBERSHIP OF THE TRUST TO THE PERSON BELOW

I ENCLOSE CHEQUE FOR:- ☐ \$40 FOR ONE YEAR / ☐ \$78 FOR TWO YEARS

OR PLEASE DEBIT MY ☐ BANKCARD/ ☐ MASTERCARD

NUMBER EXPIRY DATE/...../.....

PLEASE PRINT:

NAME.....

ADDRESS.....

POSTCODE.....

TELEPHONE..(.....).....SIGNED.....

THE PHANTOM OF THE OPERA -

Music by Andrew Lloyd Webber,

Lyrics by Charles Hart

Theatre Royal, King Street, Sydney

With ravishingly romantic music, this heartbreaking story tells of how a disfigured man, living deep beneath the Paris Opera, falls in love with a young singer at the theatre, Christine.

Mon to Sat Eves - 8 pm

Mats: Wed - 1 pm; Sat - 2 pm

TP \$72 (Mon to Thurs Eves and Mats)

GP \$75 (Mon to Sat Eves and Mats)

Tickets have been put aside for members for various dates in 1993 and 1994. Do book early as tickets are extremely limited and, because of limitations, will be restricted to 4 per member.

Discount is not available at the theatre box office. Please ring the Trust for any further details.

HOT SHOE SHUFFLE

Footbridge Theatre

Starring David Atkins, Rhonda Burchmore, Jack Webster and the Tap Brothers

Set in the 1940's featuring some wonderful torch songs and the classic music of Gershwin, Glen Miller and Duke Ellington. Jump n' Jive to this new tap musical, and swing to the music.

Season continues throughout July

Tues to Sat - 8 pm

Mats: Weds - 1 pm; Sat - 2 pm; Sun - 5 pm

TP \$34.90 (Tues to Sat Eves & Mats)

GP \$39.90 (Tues to Sat Eves & Mats)

THE GARDEN OF GRANDDAUGHTERS

by Stephen Sewell

Sydney Theatre Company/Wharf Theatre

Starring Ron Haddrick and Daphne Grey

Max and Moriley return to Melbourne for a family reunion, their three daughters are in various states of decline, success, and reproduction. Their granddaughters are all hope, promise and childhood dreams. In a series of moving reconciliations these lovable characters bravely face the myth of the harmonious nuclear family.

Playing to Saturday July 24th

Mon to Sat - 8 pm Mats: Wed - 1 pm; Sat - 2 pm

TP \$32 (Mon to Thurs Eves)

\$35 (Fri & Sat Eves)

GP \$35 (Mon to Sat Eves)

TP & GP \$26 (Wed Mats); \$28 (Sat Mats)

CINEMA

Film vouchers for Greater Union, Village and Hoyts cinemas may be purchased from the Trust Office for only \$9 (a \$2.50 discount on the general public ticket price).

Vouchers are open dated and are exchanged for tickets at the cinema box office. No handling fee is charged, nor is there any limit to the number of tickets members can buy so they also make perfect birthday gifts. Discounts are also offered at the Valhalla (Glebe), Bondi Plaza, United Cinema, Roseville Family Cinema, Manly Twin, the Mandolin Cinema and the Dendy at Martin Place, on presentation of membership card at the box office.

Made in America

Starring Whoopi Goldberg and Ted Danson

A romantic comedy about a teenage girl who's shocked to learn that her thought-to-be-dead father is actually a local car salesman. She seeks him out and sets him up with her still single mother.

Distributed by Village Roadshow

Now showing at a cinema near you

CORIOLANUS by William Shakespeare

Sydney Theatre Co/Sydney

Opera House (Drama Theatre)

Starring John Howard

A rugged tragedy in which a man's personal and public honesty mark him out for the ultimate betrayal. In the inner world of his soul, he wrestles for victory over conflicting demands.

Playing from Wednesday July 28th to Saturday

September 4th

Mon to Sat - 8 pm; Mats: Weds - 1 pm; Sat - 2 pm

TP \$32 (Mon to Thurs Eves)

\$35 (Fri and Sat Eves)

GP \$35 (Mon to Sat Eves)

TP & GP \$26 (Wed Mats); \$28 (Sat Mats)

JAKE'S WOMEN by Neil Simon

Australian Premiere

Ensemble Theatre, Milson's Point

Starring Brian Young

Jake is surrounded by seven women of various shapes, temperaments and ages. Any man would be fortunate to know and love them. However, Jake is no good at intimacy and therein lies the crux of the play.

Playing from Saturday July 24th to Sunday August 15th

Tues to Sat - 8.15 pm. Sat & Sun - 5 pm.

TP \$25 (Tues to Thurs Eves & Mats)

\$28 (Fri Eves); \$30 (Sat Eves)

GP \$28 (Tues to Thurs Eves & Mats)

\$31 (Fri Eves); \$33 (Sat Eves)

AUSTRALIAN OPERA 1993 (WINTER SEASON)**Sydney Opera House (Opera Theatre)****Salome***July 3rd (Mat), 7th, 10th, 15th***Pericole***July 3rd, 6th, 10th (Mat), 12th, 17th, 19th, 31st (Mat)**August 2nd, 4th, 6th, 12th**October 22nd, 27th, 28th, 30th (Mat)***Madama Butterfly***July 8th, 14th, 17th (Mat), 20th, 23rd, 26th, 29th**August 7th, 11th, 14th, 17th, 20th, 25th**September 2nd***Midsummer Night's Dream***August 3rd, 7th (Mat), 10th, 14th (Mat), 21st, 27th, 31st**September 4th (Mat), 9th***Mastersingers of Nuremberg***July 1st, 5th, 9th, 13th, 16th, 21st, 24th, 27th, 30th**August 5th***A Masked Ball***August 19th, 23rd, 26th**September 1st, 4th, 7th, 10th, 15th, 18th (Mat)***Please ring the Trust for price details on 331 5655 or 331 5335****JOSEPH AND THE AMAZING TECHNICOLOR DREAMCOAT****Lyrics by Tim Rice Music by Andrew Lloyd Webber****Her Majesty's Theatre, Quay Street, Railway Square****Starring David Dixon and Tina Arena with Peter Carroll, Michael Cormick and John Hannan**

A young boy betrayed by his jealous brothers is sold as a slave to a foreign land, but rises to become the saviour of a nation.

Alive with colour and excitement and extravagance theatre goers expect from an Andrew Lloyd Webber musical.

*Tues to Sat - 8 pm**Mats: Wed - 1 pm; Sat 11am - 3 pm***TP \$51 (Tues to Fri Eves); \$62.20 (Sat Eves) \$43 (Sat Mats)****\$38 (Wed Mats)****GP \$62.20 (Tues to Sat Eves and Mats)****DINKUM ASSORTED by Linda Aronson****Genesian Theatre Co/Kent Street Theatre**

A brassy, zany, and moving mixture of comedy, dance and music concerning fifteen women who work in a wartime biscuit factory.

*Playing to Saturday July 17th**Thurs to Sat - 8 pm Sun - 4.30 pm***TP \$10****GP \$15****KAFKA DANCES by Timothy Daly****Stables Theatre, Kings Cross**

In 1912 Franz Kafka experienced two events. He saw the Yiddish Theatre of Prague perform and he became engaged. Daly creates a potent, beguiling and darkly funny world in which to explore the eternal dilemma of all artists - "How to live. How to touch solid earth".

*Playing Friday July 2nd to Sunday August 1st**Tues to Sat - 8 pm**Mats: Wed - 11 am; Sun - 5 pm***TP \$15 (all performances)****GP \$20 (all performances)****LES BELLES DE PARIS****Sydney Show Club, Darling Harbour**

Sydney's prestigious dinner, dance and show venue. Fine dining and show in the tradition of the world's greatest cabarets

*Dinner from 7 pm. Show at 8.30 pm**Open seven days a week***TP \$35 (Mon to Fri Eves)****\$50 (Sat and Sun Eves)****GP \$50 (Mon to Sun Eves)****All prices inclusive of dinner and show****SYDNEY SHOWBOAT DINNER****CRUISE****Departs Campbells Cove (The Rocks) 7.30 pm daily**

Enjoy a wonderful cruise on the harbour with dinner followed by a spectacular cabaret show with Australian and International performers

TP \$72 (daily)**GP \$90 (daily)****SYDNEY SHOWBOAT "DIXIE" JAZZ****LUNCHEON CRUISE**

While listening to the Harbour City Jazz Band, enjoy a deluxe buffet with hot roasts, seafood, Asian dishes, salads, desserts, tea and coffee.

TP \$32 (daily)**GP \$39.50 (daily)**

Bookings for the above to be made only through CAROL MARTIN at the Trust