



TRUST NEWS

ALVIN AILEY TOUR



We are delighted to announce that the Australian Elizabethan Theatre Trust will be touring the Alvin Ailey Dance Company throughout Australia during 1985. Considered to be the most exciting dance company in the world today the Australian tour of this remarkable American company is the result of years of negotiation. It will play in the Lyric Theatre, Sydney Entertainment Centre in August 1985. Booking facilities will be offered to Trust Members shortly. Members who are subscribers to The Australian Ballet will be notified separately by The Australian Ballet and should book through the Ballet in order to retain their subscription seating. Please mark the application form clearly to show that you are an AETT Member (and quote your membership number) as AETT Members will be offered an additional benefit.

DIARY UPDATE

NOVEMBER

7, 8, 12 — TAKING STEPS, The Ensemble
9, 12, 14 — FIDDLER ON THE ROOF, Her Majesty's
9, 12 — LITTLE SHOP OF HORRORS, Theatre Royal
12, 13, 14 — IL MAGNIFICO, Nimrod
14 — Breakfast at Sails
16 — Dinner and Ballet
20, 22 — THE BLIND GIANT IS DANCING, STC
21, 22 — MIDDLE AGED SPREAD, Stables
22 (mat) — SLEEPING BEAUTY, Lyric
26, 27 — LOVE AND THE SINGLE TEENAGER, Griffin

DECEMBER

5 — CAMELOT dinner

LA CAGE AUX FOLLES

Keith Michell will play the lead in the Broadway musical LA CAGE AUX FOLLES which opens in Australia at Her Majesty's Theatre, Sydney on Saturday March 2, 1985.

The musical, which is based on the same Jean Poirot farce as the highly successful film of the same name is written by Harvey Fierstein (who wrote TORCH SONG TRILOGY) with musical score by Jerry Herman. It swept the boards at the 1984 Tony Awards, winning best musical, best director, best actor, best costumes, best script and best musical score. LA CAGE has been running on Broadway since August 1983 and a second production has opened in San Francisco starring Keith Michell.

La Cage aux Folles is a Saint-Tropez drag club run by Georges (to be played by Keith Michell). Its star performer is the incredible Zaza who, when he takes off his dress and wig, is also Albin, Georges' lover for twenty years. Years ago, just to see what heterosexuality was all about, Georges spent a few hours with a showgirl. The result was Jean-Michel who has lived with Georges and Albin ever since.

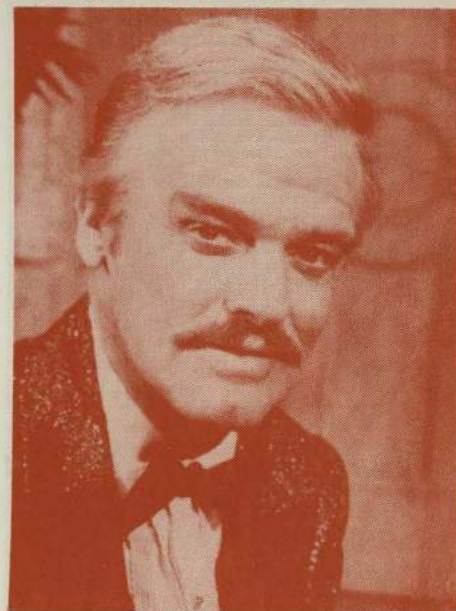
Unfortunately for Jean-Michel he falls in love with the daughter of the head of France's Tradition, Family and Morality party. How is he to explain his 'family' to his potential father-in-law?

This then is the basic plot of the musical but the reason for its popular success according to the New York Times is that it *"is an extravagantly produced, old-fashioned family musical, containing likeable characters... a sentimental love story, sumptuous sets and costumes — and that rarity, new songs that can be hummed on the way home."*

The producers of the Australian show will be bringing to Australia all of the creative people involved in the Broadway production including director Arthur Laurents, choreographer, Scott Salmon, and Ted Azar who devised the original wigs and make-up.

Trust Member nights when a \$7.00 discount applies are Monday March 4 and Tuesday March 5 when Members may purchase up to ten tickets each. For those Members who prefer to attend the theatre

on the weekend we have arranged dress circle seats at \$5.00 discount for Saturday evening March 9. As tickets are dearer on a Saturday than a week night the Trust price on March 9 is dearer than the Trust nights and Members are restricted to two tickets each. Additional tickets may of course be purchased at the general public price. A \$3.00 discount applies to all other performances Monday to Thursday (including Wednesday matinee) for the first four weeks of the season. Your booking coupon is enclosed.



Keith Michell

MITCHELLS BASS HOTLINE

We wish to advise Members that our arrangement with Mitchell's-Bass whereby Members had complimentary access to their Hotline will terminate on December 31, 1984. We have not sought to renew this arrangement as we learned from the survey of Members conducted earlier this year that Members do not value this benefit highly. Our own ticket booking facility is in the process of being streamlined and ultimately will include a facility for telephone bookings.

Trust News is the newsletter of the Australian Elizabethan Theatre Trust which is mailed free of charge to its 5000 Sydney members, eight times per year. The price concessions and advance booking facilities offered in this newsletter are available only to members of the A.E.T.T. Those wishing to join the Trust should complete the New Member Application form on the enclosed Trust Member Booking Coupons and return it to the Trust for processing.

Anyone who would like further information about the facilities available to Trust Members should ring the membership office on 357 1200. The Australian Elizabethan Theatre Trust, P.O. Box 137, Kings Cross, N.S.W. 2011.



member activities

BREAKFAST AT SAILS

Wednesday November 14 at 10 a.m.

Following the success of our breakfast at Mischa's earlier in the year, we have arranged breakfast at Sails, Rose Bay (Lyne Park, New South Head Road). Tickets are \$15.00 each and the morning will include a parade of hats by leading milliner Calvert. Do bring your friends!

BALLET AND DINNER

Friday November 16 at 6 p.m.

Tickets are still available for Members and their friends who wish to attend the Sydney premiere of the Australian Ballet's *SLEEPING BEAUTY* at the Lyric Theatre, Entertainment Centre. Dinner will be taken at the Cosmopolitan Restaurant at the centre beforehand and the price (for both dinner and A Reserve seats) is \$46.00 — only \$6.00 more than the normal price of opening night tickets.

CAMELOT DINNER — AD LIB RESTAURANT

Wednesday December 5 at 6 p.m.

Members who have already purchased tickets to see Richard Harris in *CAMELOT* on Wednesday December 5 are invited to have dinner beforehand at the Ad Lib Restaurant just across the road from the Entertainment Centre. Price for two courses with coffee and wine is \$17.00 per person.

CHRISTMAS COCKTAIL PARTY

Thursday December 20, 7.30-9.30 p.m.

This year our Christmas get together for Members will have a special significance as it is also the occasion on which we will farewell our retiring General Manager, Jeffery Joynton-Smith who has held that position with the Trust for 15 years. Members are warmly invited to join us for cocktails and light refreshments at the Trust's Kings Cross office. Tickets are \$7.00 each.



LEONARD TEALE AT MARIAN STREET

Leonard Teale who is renowned for his interpretation of the works of Henry Lawson and Banjo Patterson has devised an evening of warmth and humour taken from the poetry, prose and private papers of some of the great figures of Australian literature. *THE QUIET ACHIEVERS* will be produced by John Krummel and presented at Marian Street Theatre in December. Trust Member nights when a \$5.00 concession apply are Sunday December 16 at 5 p.m. and Tuesday December 18 at 8.15 p.m. Your booking coupon is enclosed.

NEW SHOW BY RED WEATHER



"New wave" theatre group Red Weather will present *WHISTLING IN THE DARK* at the Seymour Centre Downstairs from November 14 to December 1. It is Red Weather's third Sydney production following their highly successful productions of *RED WEATHER* and *KEEP THE DREAM RUNNING* for the last Sydney Festival. James Waites writing in the National Times said of their last production "*They succeed in showing us what new wave theatre artists are about, and why we should pay attention to them.*"

WHISTLING IN THE DARK is a performance about liberation, a celebration of the unconventional and diverse aspects of our civilised lives. Through the stories and music of their Grotesque Orchestra *RED WEATHER* confront what co-director Andrew Lindsay describes as "those irregularities and eccentricities that make us human". Nicoletta Boris and Andrew Lindsay who form the partnership on which Red Weather is based, met while studying at Le Coq mime school in Paris where they expanded their experimental concept of the Buffoon. The Buffoon is an oversized, mis-shapen parody of a human being whose actions and thoughts are an inverse mirror of everyday life. Having worked and studied throughout Europe, Boris and Lindsay moved their base from Paris to Sydney in 1981. Since then they have taught and performed around Australia and worked towards developing their show to focus on the Australian environment.

WHISTLING IN THE DARK is to be staged in two parts, beginning, ironically in the light. The Sculpture Garden of the Seymour Centre will be transformed into a miniature festival of soft sculptures, installations and performances which reflect contemporary Australia. Inside the Theatre the Grotesque Orchestra take over with their ceremonies and rituals. Their world is a gargantuan, topsy turvy place where the eccentric is the norm and all things are possible. It's a world that resembles the forbidden side, the suppressed part of our own nature and through their carnival we learn how to overcome our primordial fear of the darkness, how to whistle in the dark. Original music of the Grotesque Orchestra is composed by Sara de Jong, one of Australia's best known theatre composers. The performance commences at 7.30 p.m. AETT Members receive a \$1.00 concession and can reserve tickets on 692 0555.

AUSTRALIAN FILM INSTITUTE AWARDS

IN the AFI's annual presentation of awards to the Australian film industry, held last week in Melbourne, *ANNIE'S COMING OUT* won the award for best feature film and its star Angela Punch McGregor won the award for best actress. Directed by Gil Brealey *ANNIE'S COMING OUT* is the true story of Anne McDonald, a cerebral palsy sufferer who is a patient in a hospital for the handicapped. The film is the story of the battle to release her from institutional life. John Patterson and Chris Borthwick, the film's writers also won the award for best adaptation from another medium. Winner of best actor was John Hargreaves for his portrayal of the husband in Paul Cox's *MY FIRST WIFE*, a film about the anguish of marital breakdown. Awards for best supporting actor and supporting actress went to Steve Bisley and Anna Jemison for their roles in *SILVER CITY*, the first feature film by Sophia Turkiewicz, a graduate of the Australian Film and Television School. Set in the late 1940's and early 1950's it is about Polish immigrants and the attitude of Australians to their arrival.

NEW SEASON AT NIMROD

Nimrod has just announced details of its 1985 season to be held in three venues at the Seymour Centre. The programme includes a considerable variety of plays — old, new, borrowed and (even in one case) a trifle blue. Full details are given in the enclosed brochure. Member concessions are not available on the subscription price but a \$1.00 concession applies Monday to Thursday and Saturday matinees for single performance purchases. Trust Member nights will also be available for all productions and details will be given in Trust News throughout the year.

The final play in the York Theatre this year is Robyn Archer's new work *IL MAGNIFICO* which opens on November 7. The play concerns patronage and the arts and is set against the background of the life and times of Lorenzo di Medici, known as *Il Magnifico* and art patron par excellence. The play follows Lorenzo's life from his father's death when he took over control of his family's merchant banks, through his power struggles with a series of Popes and culminating in the infamous and sacrilegious assassination attempt in the Duomo.

With this play Robyn Archer breaks new ground as *IL MAGNIFICO* is not a musical but a play with music and has been created in collaboration with Nimrod's composer in residence David King. It combines the burlesque and naturalistic, sacred and profane into a great deal of fun. The production is directed by Aubrey Mellor and the cast includes Colin Friels as *Il Magnifico* with John Walton, John Hannan, Barbara Jane Cole, Jacqueline Kott, Brandon Burke and Arky Michael. Trust Member nights when a \$3.00 concession applies are Monday November 12, Tuesday November 13 and Wednesday November 14. Bookings on 692 0555 or on enclosed booking coupon.

AUSTRALIAN BALLET PERFORMANCES.

We are pleased to be able to offer Members a \$3.00 discount at non subscription performances of **THE SLEEPING BEAUTY** and the French Triple Bill. The company's artistic director, Maina Geilgud, is mounting a new production of **THE SLEEPING BEAUTY** for its Lyric Theatre season. The non subscription performance is on Thursday November 22 at 1.30. See also Members Activities (p.2) for a special offer for the opening night of the season.

Included in the French Triple Bill is **GAITE PARISIENNE** and **BHAKTI** by Maurice Bejart, and **SUITE EN BLANC** by Serge Lifar. Performances are Friday December 21 and Saturday December 22 at 7.30 p.m. and Saturday December 22 at 1.30 p.m. Please ring Carol Martin for Bankcard bookings before end of October.

The Australian Ballet will stage one of its most sumptuous 'productions' yet on Sunday 18th November between 10 a.m. and 4 p.m. when the curtain rises on the inaugural **AUSTRALIAN BALLET FAIR**. It will be held in the gardens surrounding Admiralty House and Kirribilli House, the Sydney residences of Their Excellencies The Governor-General and Lady Stephen and the Prime Minister and Mrs. Hawke. The Chairman of the Fair Organising Committee, Lady Potter said: "We are planning a really beautiful, traditional Fair, with fun for everyone, stalls full of wonderful things for Christmas, entertainment throughout the day and delicious, wholesome refreshments served". Special ferries will operate throughout the day from Circular Quay and buses from Milson's Point station

VOLUNTEERS WANTED!

To assist the Australian Ballet with its fair the Sydney Members Committee is organising a food stall. Any Members who would be willing to assist manning the stall should ring Carol Martin on 357 1200 who will arrange a suitable 'shift' with you. Your help would be much appreciated.

SEASON OF NEW ZEALAND PLAYS

Few New Zealand plays have been seen over this side of the Tasman and in an endeavour to rectify this situation Australian director Aarne Neeme has put together a season of three New Zealand plays which has recently opened at the Stables Theatre and will continue until the New Year.

Playing until November 11 is **FORESKIN'S LAMENT**, a play about rugby in particular and New Zealand in general. It is written by Greg McGee himself a former junior All Black and received critical acclaim during its New Zealand tour in 1980/81.

MIDDLE AGE SPREAD which opens on November 15 is written by Roger Hall whose previous play **FLEXTIME** has been presented throughout Australia. **MIDDLE AGE SPREAD** is a play about the

LITTLE SHOP OF HORRORS

Constance Grappo who began her association with **LITTLE SHOP OF HORRORS** as assistant on the original U.S. production and has assisted with the staging of New York and London productions is currently in Sydney directing the first Australian production of this highly successful musical.

LITTLE SHOP OF HORRORS is an adorable little musical about a man-eating plant which brings fame and success to an amateur botanist named Seymour Krelbourn. However the plants insatiable demands make his master question the meaning of his unexpected fortune. Christopher Pate stars as Seymour with Denise Kirby, Barry Lovett and David Whitney. The plant puppets were created by Martin P. Robinson.

Trust Member nights when a \$5.00 concession applies are Friday November 9 (6 p.m. and 9 p.m.) and Monday November 12. At other performances Monday to Thursday and 6 p.m. performances Friday and Saturday a \$2.50 discount applies (until Saturday December 1).



Audrey II, the man eating plant

SYDNEY DANCE COMPANY

Single performance tickets are now available for the Sydney Dance Company's Opera House season. The season includes a programme of short contemporary dance works by Graeme Murphy, Louis Falco, and Garth Welch in the Opera Theatre from November 8 to 24 and the premiere of Graeme Murphy's newest full length work **AFTER VENICE** in the Drama Theatre from December 1 to 22. AETT Members receive a \$2.00 concession on single performance purchases or can save \$7.00 by purchasing a subscription ticket to both programmes. Your booking coupon is enclosed.

lives and marriages of middle-class, middle-aged New Zealanders. It was performed in London in 1979 and won the West End Manager's Award for best new comedy.

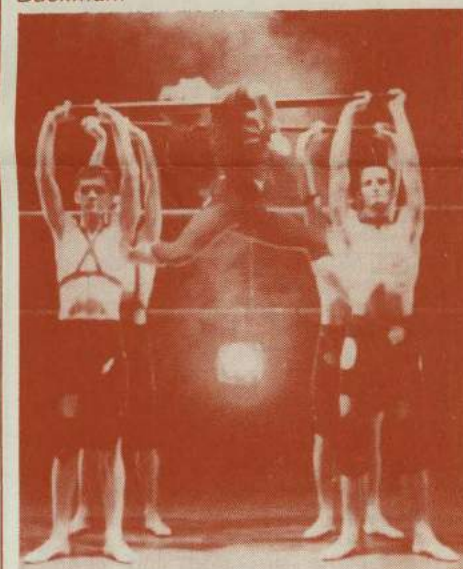
The final play in the trilogy is **BERT AND MAISY**, a black comedy about the parochialism of suburban life by Robert Lord whose play **WELL HUNG** was presented at Nimrod some years ago. Robert Lord now resides in New York and in recent years has had plays produced both there and in New Zealand.

Aarne Neeme who spent three months working in New Zealand last year as the inaugural Tasman Fellow will direct the plays. The cast which is headed by the distinguished New Zealand actor Grani

what's on in Canberra

(A.E.T.T. concession \$1.00 all presentations)

Queenslands' classical ballet company **THE QUEENSLAND BALLET**, will present its highly successful production of Carl Orff's **CARMINA BURANA** at the Canberra Theatre Centre from November 7 to 10. **CARMINA BURANA** is an explosive celebration of music and dance, fusing images of tender and passionate lovers, heroic warriors and lusty revellers into a richly woven medieval tapestry. Other works in the programme are **SUMMER SOLSTICE** by Barry Moreland and **LANDSCAPES**, a new work by Adelaide choreographer Pamela Buckman.



The Queensland Ballet in **CARMINA BURANA**

C.J. Dennis' immortal poetry will come to life again when the **CANBERRA PHILHARMONIC SOCIETY** presents its production of the musical **THE SENTIMENTAL BLOKE** at the Canberra Theatre from November 16 to 24. C.J. Dennis' verse first appeared in 1915—the story of the likeable larrikin and his love for Doreen is one of the classics of Australian literature. The music in this version was written by former Canberra resident Albert Arlin whilst the adaptation of Dennis' verses is by Nancy Brown and Lloyd Thomson.

The **PLAYBOX THEATRE COMPANY'S** production of **NOT ABOUT HEROES** will be presented at the Canberra Theatre Centre from November 15 for a limited season. Written by Stephen Macdonald it is a haunting play about the brief but deep friendship between two of the World War poets, Siegfried Sassoon and Wilfred Owen who meet at Craiglockhart War Hospital for Nervous Disorders. Using their letters, memoirs and poems, the play explores, simply and movingly, the nature of love and compassion at a time of hatred, futility and death. **NOT ABOUT HEROES** won a 1982 Fringe First award at the Edinburgh Festival. The Canberra Season follows Playbox's Australian premiere in Melbourne which was directed by Louis Nowra.

member activities

BREAKFAST AT SAILS

Wednesday November 14 at 10 a.m.

Following the success of our breakfast at Mischa's earlier in the year, we have arranged breakfast at Sails, Rose Bay (Lyne Park, New South Head Road). Tickets are \$15.00 each and the morning will include a parade of hats by leading milliner Calvert. Do bring your friends!

BALLET AND DINNER

Friday November 16 at 6 p.m.

Tickets are still available for Members and their friends who wish to attend the Sydney premiere of the Australian Ballet's *SLEEPING BEAUTY* at the Lyric Theatre, Entertainment Centre. Dinner will be taken at the Cosmopolitan Restaurant at the centre beforehand and the price (for both dinner and A Reserve seats) is \$46.00 — only \$6.00 more than the normal price of opening night tickets.

CAMELOT DINNER — AD LIB RESTAURANT

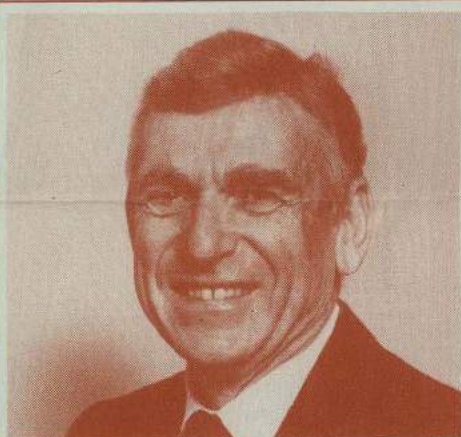
Wednesday December 5 at 6 p.m.

Members who have already purchased tickets to see Richard Harris in *CAMELOT* on Wednesday December 5 are invited to have dinner beforehand at the Ad Lib Restaurant just across the road from the Entertainment Centre. Price for two courses with coffee and wine is \$17.00 per person.

CHRISTMAS COCKTAIL PARTY

Thursday December 20, 7.30-9.30 p.m.

This year our Christmas get together for Members will have a special significance as it is also the occasion on which we will farewell our retiring General Manager, Jeffery Joynton-Smith who has held that position with the Trust for 15 years. Members are warmly invited to join us for cocktails and light refreshments at the Trust's Kings Cross office. Tickets are \$7.00 each.



LEONARD TEALE AT MARIAN STREET

Leonard Teale who is renowned for his interpretation of the works of Henry Lawson and Banjo Patterson has devised an evening of warmth and humour taken from the poetry, prose and private papers of some of the great figures of Australian literature. *THE QUIET ACHIEVERS* will be produced by John Krummel and presented at Marian Street Theatre in December. Trust Member nights when a \$5.00 concession apply are Sunday December 16 at 5 p.m. and Tuesday December 18 at 8.15 p.m. Your booking coupon is enclosed

NEW SHOW BY RED WEATHER



"New wave" theatre group Red Weather will present *WHISTLING IN THE DARK* at the Seymour Centre Downstairs from November 14 to December 1. It is Red Weather's third Sydney production following their highly successful productions of *RED WEATHER* and *KEEP THE DREAM RUNNING* for the last Sydney Festival. James Waites writing in the National Times said of their last production "*They succeed in showing us what new wave theatre artists are about, and why we should pay attention to them.*"

WHISTLING IN THE DARK is a performance about liberation, a celebration of the unconventional and diverse aspects of our civilised lives. Through the stories and music of their Grotesque Orchestra *RED WEATHER* confront what co-director Andrew Lindsay describes as "those irregularities and eccentricities that make us human".

Nicoletta Boris and Andrew Lindsay who form the partnership on which Red Weather is based, met while studying at Le Coq mime school in Paris where they expanded their experimental concept of the Buffoon. The Buffoon is an oversized, mis-shapen parody of a human being whose actions and thoughts are an inverse mirror of everyday life. Having worked and studied throughout Europe, Boris and Lindsay moved their base from Paris to Sydney in 1981. Since then they have taught and performed around Australia and worked towards developing their show to focus on the Australian environment.

WHISTLING IN THE DARK is to be staged in two parts, beginning, ironically in the light. The Sculpture Garden of the Seymour Centre will be transformed into a miniature festival of soft sculptures, installations and performances which reflect contemporary Australia.

Inside the Theatre the Grotesque Orchestra take over with their ceremonies and rituals. Their world is a gargantuan, topsy turvy place where the eccentric is the norm and all things are possible. It's a world that resembles the forbidden side, the suppressed part of our own nature and through their carnival we learn how to overcome our primordial fear of the darkness, how to whistle in the dark.

Original music of the Grotesque Orchestra is composed by Sara de Jong, one of Australia's best known theatre composers. The performance commences at 7.30 p.m. AETT Members receive a \$1.00 concession and can reserve tickets on 692 0555.

AUSTRALIAN FILM INSTITUTE AWARDS

IN the AFI's annual presentation of awards to the Australian film industry, held last week in Melbourne, *ANNIE'S COMING OUT* won the award for best feature film and its star Angela Punch McGregor won the award for best actress. Directed by Gil Brealey *ANNIE'S COMING OUT* is the true story of Anne McDonald, a cerebral palsy sufferer who is a patient in a hospital for the handicapped. The film is the story of the battle to release her from institutional life. John Patterson and Chris Borthwick, the film's writers also won the award for best adaptation from another medium.

Winner of best actor was John Hargreaves for his portrayal of the husband in Paul Cox's *MY FIRST WIFE*, a film about the anguish of marital breakdown. Awards for best supporting actor and supporting actress went to Steve Bisley and Anna Jemison for their roles in *SILVER CITY*, the first feature film by Sophia Turkiewicz, a graduate of the Australian Film and Television School. Set in the late 1940's and early 1950's it is about Polish immigrants and the attitude of Australians to their arrival.

NEW SEASON AT NIMROD

Nimrod has just announced details of its 1985 season to be held in three venues at the Seymour Centre. The programme includes a considerable variety of plays — old, new, borrowed and (even in one case) a trifle blue. Full details are given in the enclosed brochure. Member concessions are not available on the subscription price but a \$1.00 concession applies Monday to Thursday and Saturday matinees for single performance purchases. Trust Member nights will also be available for all productions and details will be given in Trust News throughout the year.

The final play in the York Theatre this year is Robyn Archer's new work *IL MAGNIFICO* which opens on November 7. The play concerns patronage and the arts and is set against the background of the life and times of Lorenzo di Medici, known as *Il Magnifico* and art patron par excellence. The play follows Lorenzo's life from his father's death when he took over control of his family's merchant banks, through his power struggles with a series of Popes and culminating in the infamous and sacrilegious assassination attempt in the Duomo.

With this play Robyn Archer breaks new ground as *IL MAGNIFICO* is not a musical but a play with music and has been created in collaboration with Nimrod's composer in residence David King. It combines the burlesque and naturalistic, sacred and profane into a great deal of fun. The production is directed by Aubrey Mellor and the cast includes Colin Friels as *Il Magnifico* with John Walton, John Hannan, Barbara Jane Cole, Jacqueline Kott, Brandon Burke and Arky Michael. Trust Member nights when a \$3.00 concession applies are Monday November 12, Tuesday November 13 and Wednesday November 14. Bookings on 692 0555 or on enclosed booking coupon.

AUSTRALIAN BALLET PERFORMANCES

We are pleased to be able to offer Members a \$3.00 discount at non subscription performances of THE SLEEPING BEAUTY and the French Triple Bill. The company's artistic director, Maina Geilgud, is mounting a new production of THE SLEEPING BEAUTY for its Lyric Theatre season. The non subscription performance is on Thursday November 22 at 1.30. See also Members Activities (p.2) for a special offer for the opening night of the season.

Included in the French Triple Bill is GAITE PARISIENNE and BHAKTI by Maurice Bejart, and SUITE EN BLANC by Serge Lifar. Performances are Friday December 21 and Saturday December 22 at 7.30 p.m. and Saturday December 22 at 1.30 p.m. Please ring Carol Martin for Bankcard bookings before end of October.

The Australian Ballet will stage one of its most sumptuous 'productions' yet on Sunday 18th November between 10 a.m. and 4 p.m. when the curtain rises on the inaugural AUSTRALIAN BALLET FAIR. It will be held in the gardens surrounding Admiralty House and Kirribilli House, the Sydney residences of Their Excellencies The Governor-General and Lady Stephen and the Prime Minister and Mrs. Hawke. The Chairman of the Fair Organising Committee, Lady Potter said: "We are planning a really beautiful, traditional Fair, with fun for everyone, stalls full of wonderful things for Christmas, entertainment throughout the day and delicious, wholesome refreshments served". Special ferries will operate throughout the day from Circular Quay and buses from Milson's Point station

VOLUNTEERS WANTED!

To assist the Australian Ballet with its fair the Sydney Members Committee is organising a food stall. Any Members who would be willing to assist manning the stall should ring Carol Martin on 357 1200 who will arrange a suitable 'shift' with you. Your help would be much appreciated.

SEASON OF NEW ZEALAND PLAYS

Few New Zealand plays have been seen over this side of the Tasman and in an endeavour to rectify this situation Australian director Aarne Neeme has put together a season of three New Zealand plays which has recently opened at the Stables Theatre and will continue until the New Year.

Playing until November 11 is FORESKIN'S LAMENT, a play about rugby in particular and New Zealand in general. It is written by Greg McGee himself a former junior All Black and received critical acclaim during its New Zealand tour in 1980/81.

MIDDLE AGE SPREAD which opens on November 15 is written by Roger Hall whose previous play FLEXTIME has been presented throughout Australia. MIDDLE AGE SPREAD is a play about the

LITTLE SHOP OF HORRORS

Constance Grappo who began her association with LITTLE SHOP OF HORRORS as assistant on the original U.S. production and has assisted with the staging of New York and London productions is currently in Sydney directing the first Australian production of this highly successful musical.

LITTLE SHOP OF HORRORS is an adorable little musical about a man-eating plant which brings fame and success to an amateur botanist named Seymour Krelbourn. However the plants insatiable demands make his master question the meaning of his unexpected fortune. Christopher Pate stars as Seymour with Denise Kirby, Barry Lovett and David Whitney. The plant puppets were created by Martin P. Robinson.

Trust Member nights when a \$5.00 concession applies are Friday November 9 (6 p.m. and 9 p.m.) and Monday November 12. At other performances Monday to Thursday and 6 p.m. performances Friday and Saturday a \$2.50 discount applies (until Saturday December 1).



Audrey II, the man eating plant

SYDNEY DANCE COMPANY

Single performance tickets are now available for the Sydney Dance Company's Opera House season. The season includes a programme of short contemporary dance works by Graeme Murphy, Louis Falco, and Garth Welch in the Opera Theatre from November 8 to 24 and the premiere of Graeme Murphy's newest full length work AFTER VENICE in the Drama Theatre from December 1 to 22. AETT Members receive a \$2.00 concession on single performance purchases or can save \$7.00 by purchasing a subscription ticket to both programmes. Your booking coupon is enclosed.

lives and marriages of middle-class, middle-aged New Zealanders. It was performed in London in 1979 and won the West End Manager's Award for best new comedy.

The final play in the trilogy is BERT AND MAISY, a black comedy about the parochialism of suburban life by Robert Lord whose play WELL HUNG was presented at Nimrod some years ago. Robert Lord now resides in New York and in recent years has had plays produced both there and in New Zealand.

Aarne Neeme who spent three months working in New Zealand last year as the inaugural Tasman Fellow will direct the plays. The cast which is headed by the distinguished New Zealand actor Grant

LOVE AND THE SINGLE TEENAGER RETURNS

Four years after its highly acclaimed debut in Sydney at the Stables Theatre and following a recent sell out season at Brisbane's La Boite Theatre, the Griffin Theatre Company presents the return of Grant Fraser's LOVE AND THE SINGLE TEENAGER for a three week season at the Off-Broadway Theatre, commencing November 23.

LOVE AND THE SINGLE TEENAGER is ten variations on romance and reality, presenting different perspectives and views on teenage life, love, pop stars, movie idols and fantasies in an hilarious and "up front" style. The teenagers depicted discover that there is an enormous gap between romance and reality; that life, as depicted in the movies, bears little or no resemblance to long, hot school holidays on the beach, or to Saturday matinees at the movies where life definitely does not imitate art.

LOVE AND THE SINGLE TEENAGER is directed by Colin Schumacher, with sets designed by Jack Ritchie and costumes designed by Julie Pajackowska and Jack Ritchie. The cast is Andrew James, Leigh Morgan, Garry Scale and Rainee Skinner. Trust Member nights for this production are Monday November 26 and Tuesday November 27 at 8 p.m. where a \$4.00 concession applies. Your booking coupon is enclosed.

OPERA MODE AT OFF BROADWAY

OPERA MODE, a new company to join the Sydney theatre scene in 1984, will present THE CONSUL by Gian-Carlo Menotti at the Off Broadway Theatre (Bay Street, Glebe) from Wednesday November 14 to Saturday November 17.

Opera Mode, working on a cooperative basis aims to present to Sydney audiences works that are outside of the repertoire of The Australian Opera, particularly 20th century works. They have already presented this year TRISTAN AND ISEULT, THREE'S COMPANY, and DUKE BLUEBEARD'S CASTLE.

Written in 1950 THE CONSUL is concerned about the alienation of people from society and so is as relevant today as when it was written. It will be directed by Colleen Clifford with musical direction by Edith Rens. Trust Members receive a \$5.00 concession at all performances and may reserve their tickets on 692 0964.

Tilly (who will recreate the role of Tupper in FORESKIN'S LAMENT) includes Jonathan Biggins, Robin Bowering, Terry Brady, Alan Docker, John Doyle, Robyn Gurney, Julie Hudspeth, Tony Martin, Bill Pearson, Tom Rennie and Katherine Thomson. The designer is Tolis Papazoglou of Wellington's Downstage Theatre who has been working recently with the Melbourne Theatre Company.

Trust Members receive a \$2.00 concession at all performances. Trust Member nights have been arranged for MIDDLE AGED SPREAD (November 21 and 22) and BERT AND MAISY (December 19 and 20) when a \$4.00 concession applies. Bookings can be made on the enclosed booking coupon.

on stage in London

by Margaret Leask*

The most talked about production of the new theatre season is Ron Daniel's Royal Shakespeare Company's HAMLET at Stratford upon Avon which will transfer to the Barbican Theatre, London in 1985. Roger Rees, the original Nicholas Nickleby, cast in the title role has been praised for his "fascinating Hamlet, which precisely captures the character's spiritual progress" (Michael Billington, The Guardian). Currently the company's London repertoire includes a new play by Charles Wood, RED STAR, set in Moscow where the central character is a member of the Theatre of the Glorious Soviet Agricultural Worker; a revival (after 14 years) of Shakespeare's HENRY VIII directed by Howard Davies; and a superbly atmospheric production of MEASURE FOR MEASURE with Daniel Massey and the Duke.

The National Theatre's October to December repertoire includes Christopher Morahan's highly praised production of Chekhov's WILD HONEY — a version of 'Platonov' by Michael Frayn. With Ian McKellan (who will also play CORIOLANUS in a production opening on November 30) and Charlotte Cornwell heading the cast, critics have described it as "a triumph", "a ravishing extravaganza", "with all the basic theatrical skills of writing, acting, direction, and design exhilaratingly on show" (The Observer).

IN the West End the recently opened production of David Merrick's award winning Broadway musical, 42nd STREET, with direction and choreography by Gower Champion, looks set to run forever!

On October 3rd London's international Dance Umbrella 84 Festival (the sixth) opens and runs for seven weeks. The Lar Lubovitch Company from New York make their London debut, while many small British contemporary dance companies will provide opportunities to experience the exciting work of flourishing young choreographers. Russell Dumas from Australia will be taking part.

*Margaret Leask is a former editor Trust News now living in London where she is an artists agent.

CHRISTMAS GIFT SUGGESTIONS

The Australian Arts Diary 1985 is a fine-quality practical diary illustrated with 16 colour plates of paintings of the Australian landscape and over 30 black and white photographs from a wide variety of works by Australian artists. Dimensions are 25 cm x 19 cm. We are pleased to offer Trust Members this unique diary for \$12.00 (including postage and packing).

A year's membership of the A.E.T.T. is also an ideal gift for that friend or relative who'd like to see more theatre. See enclosed application form.

SHOWGUIDE

**** Indicates concession which may be applied to each of two tickets any performance (unless otherwise stated).**

THE AUSTRALIAN OPERA (266 4800)
Her Majesty's Theatre, 107 Quay Street, Sydney
Fiddler on the Roof
November 5 to 24
**\$2.00 (Mon to Thurs)
**\$5.00 (Nov 9, 12, 14 (mat))

BONDI PAVILION THEATRE (30 7211)
Queen Elizabeth Drive, Bondi Beach
Ha-Ha-Ha: Broken Tails
Until November 11
**\$1.00

ENSEMBLE THEATRE (929 8877)
78 McDougall Street, Milsons Point
Taking Steps by Alan Ayckbourn
Commences November 3
**\$2.00 (Nov 7, 8 and 12)

FOOTBRIDGE THEATRE (692 9955)
University of Sydney, Parramatta Road
New Moon Theatre Company: Beach Blanket Tempest
Continuing
**\$2.00
**\$6.00 (November 5 & 6)

GENESIAN THEATRE (267 7774)
470 Kent Street, Sydney
The Murder Room by Jack Sharkey
Commences November 3
**\$1.00

KINSELAS (331 3100)
Oxford Square
2001: A POSTCODE
Commences November 5
**\$2.00

Northside Theatre (498 3166)
MARIAN STREET THEATRE
Marian Street, Killara
Seasons Greetings by Alan Ayckbourn
Continuing
**\$1.00 (Mon-Thurs & Sun)

NEW THEATRE (519 3403)
542 King Street, Newtown
Waiting on the Parade by John Murrell
Until November 24
**\$1.00

NIMROD AT THE SEYMOUR (692 0555)
Seymour Centre, Cnr. Cleveland St. & City Road
York Theatre: **Il Magnifico** by Robyn Archer
Commences November 7
Everest Theatre: **The Golden Oldies** by Dorothy Hewett
Until November 17
**\$1.00
\$3.00 (Nov 12, 13, 14 — **Il Magnifico)

OFF BROADWAY THEATRE (692 0964)
73-79 Bay Street, Glebe
Opera Mode: The Consul by Gian-Carlo Menotti
November 14-17
**\$5.00
Griffin Theatre Company **Love and the Single Teenager** by Grant Fraser
Commences Friday November 23
**\$1.00
**\$4.00 (Nov 26 & 27)

THE PERFORMANCE SPACE (698 7235)
199 Cleveland Street, Redfern
One Extra Dance Company: Ah Q Goes West by Kai Tai Chan
November 8 to 11
Darc Swan: November 13 to 25
All Out Ensemble: Blood of the River
Commences December 4
**\$1.00

PHILLIP STREET THEATRE (232 8570)
169 Phillip Street, Sydney
Jack and the Beanstalk
Commences November 13
**\$1.00

Q THEATRE (047 21 5735)
Cnr. Railway & Belmore Streets, Penrith
Better Known as Bee by Tony Reese
Commences November 23
**50c.

SEYMOUR CENTRE (692 0555)
Cnr. Cleveland St. & City Road
Downstairs: **Red Weather: Whistling in the Dark**
November 14 to December 1
**\$1.00
Everest Theatre: **The Seymour Group: Lighthouse** by Peter Maxwell-Davies
November 30 and December 1
**\$1.00

STABLES THEATRE (33 3817)
10 Nimrod Street, Kings Cross
Foreskin's Lament by Greg McGee
Until November 11
Middle Aged Spread by Roger Hall
November 15 to December 9
**\$2.00
**\$4.00 (Nov 21 & 22)

SYDNEY DANCE COMPANY (20 588)
Opera Theatre, Sydney Opera House
Triple Bill
November 8 to 24
Drama Theatre:
After Venice by Graeme Murphy
Commences December 1
**\$2.00

SYDNEY SAILORS HOME (273 274)
106-108 George Street, Sydney
Funny Stories: Tablepiece
Until November 11
Toe Truck Theatre:
Mereki by Bob Maza
November 17, 18 and 24
**\$1.00

SYDNEY THEATRE COMPANY (358 4399)
Drama Theatre, Sydney Opera House
The Blind Giant is Dancing by Stephen Sewell
Until November 24
**\$1.00 (Mon to Thurs & Sat mat)
**\$3.00 (Nov 20 & 22)

THEATRE ROYAL (231 6111)
King Street, Sydney
Little Shop of Horrors
Commences November 8
**\$2.50 (except Fri and Sat 9 pm until Dec 1)
**\$5.00 (Nov 9 & 12)

Films

A Concession available ONLY by purchase of concessional vouchers from the A.E.T.T. in person or on the enclosed coupon and available ONLY for screenings specified below. Members may purchase as many vouchers as they wish.

N.B. Concession is NOT available by presenting membership card at cinema box office.

GREATER UNION
All theatres and all presentations
**\$1.00
(except Saturday and Sunday performances and Public Holidays)

VILLAGE THEATRES
All Sydney Theatres **\$1.75 (except Saturday evenings and Public Hols)

HOYTS ENTERTAINMENT CENTRE
All Theatres and all presentations
**\$1.50 (except Saturday evenings and Public Hols)

B Concession available at theatre box office on presentation of card

HOYTS PLAZA BONDI (389 5877)
**\$1.50 (except Saturday evenings)

DENDY CINEMA (233 8166)
Martin Place
**\$1.00 (except Saturday evenings)

CHAUFEX CINEMA (33 0695)
Cnr Oxford St. & Oatley Rd., Paddington
**\$1.00

IN BRIEF

(For A.E.T.T. concession and phone number for bookings see Showguide)

The Canberra based company **HUMAN VEINS DANCE THEATRE** is undertaking a South Coast tour in November. Between November 16 and December 1 it will play Cooma, Merimbula, Moruya and Ulladulla. Works being presented are **GIGGLES, CLOWNS and THE OUTING**, all choreographed by Don Asker. See local press for venues and times. AETT concession is \$1.00

Following its success at the Sailors' Home last year with **MAX AND MILLI TOE TRUCK THEATRE** returns there to give three general public performances of a new play at 4 p.m. on Saturday November 17, Sunday November 18 and Saturday November 24. **MEREKI (The Peacemaker)** is by leading Aboriginal writer Bob Maza and sets out the racial tensions and conflicts over an Aboriginal Housing Scheme in Redfern against the background of the dreaming of the Koori people. The production is family entertainment suitable for upper primary and lower secondary students.

The cast has recently been announced for the **ENSEMBLE THEATRE'S** production of **TAKING STEPS** by Alan Ayckbourn to open in early November. They are Tony Blackett, Belinda Giblin, Leonore Smith, Peter Sumner, John Livingstone and

Michael Gillett. Trust Member nights when a \$2.00 concession applies are Wednesday November 7, Thursday November 8 and Monday November 12. Contact the theatre for bookings.

PHILLIP STREET THEATRE's Christmas panto opens on November 13 and runs until Saturday December 22 playing Monday to Friday at 10 a.m. and 12.30 p.m. daily and Saturday December 15 and Saturday December 22 at 1.30 p.m. This year the production is **JACK AND THE BEANSTALK**. Phillip Street pantos are always very popular so if you want to get there book soon!

Tickets are still available for the **AUSTRALIAN OPERA'S** summer season of operas for which Members receive a discount at certain performances. These are **FIDDLER ON THE ROOF** (December 31), **TOSCA** (January 30), **JENUFA** (January 25 and 28), **DON PASQUALE** (February 11) and **NORMA** (January 29). Your booking coupon is enclosed.

THE SEYMOUR GROUP'S final production for the year will be Peter Maxwell Davies' spinechilling chamber opera, **THE LIGHTHOUSE** to be presented in the Everest Theatre, Seymour Centre on Friday November 30 and Saturday

December 1. **THE LIGHTHOUSE** was first presented at the 1980 Edinburgh Festival where it made an immediate impact. It tells of the disappearance — unexplained to this day — of three lighthouse keepers from the Flannan Isles lighthouse off the Outer Hebrides in 1900. The production is directed by Louis Nowra.

Coming to **THE PERFORMANCE SPACE** between November 8 and 11 is a return season of **One Extra Dance Company** with **AH Q GOES WEST**. It is followed from November 13 to 25 by a programme of new dance works by the very modern contemporary dance company **Darc Swan**. Commencing December 4 is a new performance work **BLOOD OF THE RIVER** by the experimental theatre company **All Out Ensemble**.

The season of **BROKEN TAILS** by Ha-Ha-Ha which was due to be presented at **THE BONDI PAVILION THEATRE** in September has been rescheduled. It has just opened and runs until November 11. It will be followed from November 14 to 23 by a Festival of Aboriginal films. In the gallery there will be an exhibition of pots by Aboriginal potter Thancoupe and batiks by the women of Utopia in Western Australia running from November 20 to December 2.

TRUST MEMBERS BOOKING COUPONS — SUPPLEMENT TO TRUST NEWS — NOVEMBER 1984 VOL. 8 No. 7

Please tear off coupon and mail with individual cheques and stamped addressed envelopes to Trust Members Bookings. The Australian Elizabethan Theatre Trust P.O. Box 137 Kings Cross, N.S.W. 2011. Please print all information. For easier reading performance and price information is given alongside booking coupon.

PLEASE READ BOTH SIDES BEFORE CUTTING

Key: TM =Trust Member
G.P. =General Public
s.a.e. = stamped addressed envelope

PLEASE NOTE: If stamped addressed envelope is not enclosed tickets will be left at the box office for collection.

NEW MEMBER APPLICATION

I would like to become a member

MR. MRS. MISS

ADDRESS

POSTCODE TEL (day) (night)

I enclose my cheque (made payable to A.E.T.T.) or please charge my Bankcard No. ☐ ☐ ☐ ☐ ☐ ☐ ☐ ☐ ☐ ☐ ☐ ☐ ☐ ☐ ☐ ☐

Expiry date

The Amount of \$20.00

Usual Signature

N.B. Membership valid for 12 months from date of joining

LA CAGE AUX FOLLES— HER MAJESTY'S THEATRE

N.B. Members are restricted to two tickets at T.M. price except **
Please send me

..... tickets @ \$18.00=\$
..... tickets @ \$17.00=\$
..... tickets @ \$22.00=\$
..... tickets @ \$20.00=\$
..... tickets @ \$25.00=\$
..... tickets @ \$27.00=\$

Delete as applicable
Evening
Matinee
Stalls
Dress Circle

For (day and date) (1st pref) (2nd pref)

NAME A.E.T.T. No.

ADDRESS

POSTCODE TEL (day) (night)

I enclose my cheque/p.o. (made payable to Mitchells-Bass)
for \$ together with s.a.e.

LA CAGE AUX FOLLES — HER MAJESTY'S THEATRE

Performances: Saturday March 2 to Saturday March 30
Monday to Saturday at 8 p.m.

Matinees: Wednesday & Saturday at 2 p.m.

Prices:	T.M.	G.P.	Pens/Stud
Evenings Mon to Thurs:	\$22.00	\$25.00	—
Fri and Sat:	—	\$27.00	—
** Mar 4 and 5:	\$18.00	—	—
Mar 9:	\$22.00	\$27.00	—
Matinees Wed:	\$17.00	\$20.00	\$17.00
Matinees Sat:	—	\$20.00	\$17.00

** Members may purchase up to ten tickets on these nights.

STABLES THEATRE — N.Z. PLAYS

N.B. Members are restricted to two tickets at T.M. price except **
Please send me

..... tickets @ \$8.00=\$
..... tickets @ \$10.00=\$
..... tickets @ \$12.00=\$

Delete as applicable
Evening
5.30 p.m.

For (day and date) (1st pref) (2nd pref)

NAME A.E.T.T. No.

ADDRESS

POSTCODE TEL (day) (night)

I enclose my cheque/p.o. (made payable to NZ Plays)
for \$ together with s.a.e.

STABLES THEATRE — N.Z. PLAYS

Performances: Middle Age Spread:
November 15 to December 9
Bert and Maisy
December 13 to January 6
Tuesday to Friday at 8.15 p.m.
Saturday at 5.30 p.m. and 8.30 p.m.
Sunday at 5.30 p.m.

Prices:	T.M.	G.P.	Pens/Stud
Evenings:	\$10.00	\$12.00	\$8.00
**Nov 21, 22 }			
**Dec 19, 20 }	\$8.00	\$12.00	\$8.00

**Members may purchase up to ten tickets on these nights

SYDNEY DANCE COMPANY — OPERA HOUSE

N.B. Members are restricted to two tickets at T.M. price
Please send me

..... tickets @ \$32.00=\$
..... tickets @ \$34.00=\$
..... tickets @ \$28.00=\$
..... tickets @ \$17.50=\$
..... tickets @ \$19.50=\$
..... tickets @ \$15.50=\$

Delete as applicable
Evening
Matinee
Stalls
Dress Circle

For (day and date) (1st pref) (2nd pref)

NAME A.E.T.T. No.

ADDRESS

POSTCODE TEL (day) (night)

I enclose my cheque/p.o. (made payable to Sydney Opera House)
for \$ together with s.a.e.

SYDNEY DANCE COMPANY — OPERA HOUSE

Performances: Opera Theatre — Nov 8 to 24 at 7.30 pm
Matinee: Sat Nov 24 at 1.30 p.m.
Drama Theatre — Dec 1 to 22 at 8.00 pm
Matinee: Sat Dec 15 and 22 at 4.30 pm

Prices:	T.M.	G.P.	Pens/Stud
Subscription price	\$32.00	\$34.00	\$28.00
Single programmes	\$17.50	\$19.50	\$15.50

GRIFFIN THEATRE — LOVE & THE SINGLE TEENAGER

N.B. Members may purchase as many tickets as they wish.

Please send me

..... tickets for Monday November 26 @ \$9.90=\$
..... tickets for Tuesday November 27 @ \$9.90=\$

NAME A.E.T.T. No.

ADDRESS

POSTCODE TEL (day) (night)

I enclose my cheque/p.o. (made payable to A.E.T.T.)
for \$ together with s.a.e.

SYDNEY THEATRE COMPANY — THE BLIND GIANT IS DANCING

N.B. Members may purchase as many tickets as they wish.

Please send me

..... tickets for Tuesday November 20 @ \$13.90=\$
..... tickets for Thursday November 22 @ \$13.90=\$

NAME A.E.T.T. No.

ADDRESS

POSTCODE TEL (day) (night)

I enclose my cheque/p.o. (made payable to S.T.C.)
for \$ together with s.a.e.

MEMBER ACTIVITIES

Please send me

..... tickets for **Breakfast at Sails** @ \$15.00=\$
(Wednesday November 14)
..... tickets for **Ballet and Dinner** @ \$46.00=\$
(Friday December 16)
..... tickets for **Camelot Dinner** @ \$17.00=\$
(Wednesday December 5)
..... tickets for **Christmas Party** @ \$7.00=\$
(Thursday December 20)

NAME A.E.T.T. No.

ADDRESS

POSTCODE TEL (day) (night)

I enclose my cheque/p.o. (made payable to A.E.T.T.)
for \$ together with s.a.e. for return of tickets.

MARIAN STREET THEATRE — THE QUIET ACHIEVERS

N.B. Members may purchase as many tickets as they wish.

Please send me

..... tickets for Sunday December 16 (5 pm) @ \$10.90=\$
..... tickets for Tuesday December 18 @ \$10.90=\$

NAME A.E.T.T. No.

ADDRESS

POSTCODE TEL (day) (night)

I enclose my cheque/p.o. (made payable to A.E.T.T.)
for \$ together with s.a.e.

FILMS

Please send me

HOYTS ENTERTAINMENT CENTRE

..... vouchers @ \$5.00=\$

VILLAGE THEATRES

..... vouchers @ \$5.00=\$

GREATER UNION THEATRE

..... vouchers @ \$5.50=\$

NAME A.E.T.T. No.

ADDRESS

POSTCODE TEL (day) (night)

I enclose my cheque/p.o. (made payable to A.E.T.T.)
for \$ together with s.a.e.

THE AUSTRALIAN OPERA — SYDNEY OPERA HOUSE

Performances:

Fiddler on the Roof — December 31

Tosca — January 30

Jenufa — January 25 & 28

Don Pasquale — February 11

Norma — January 29

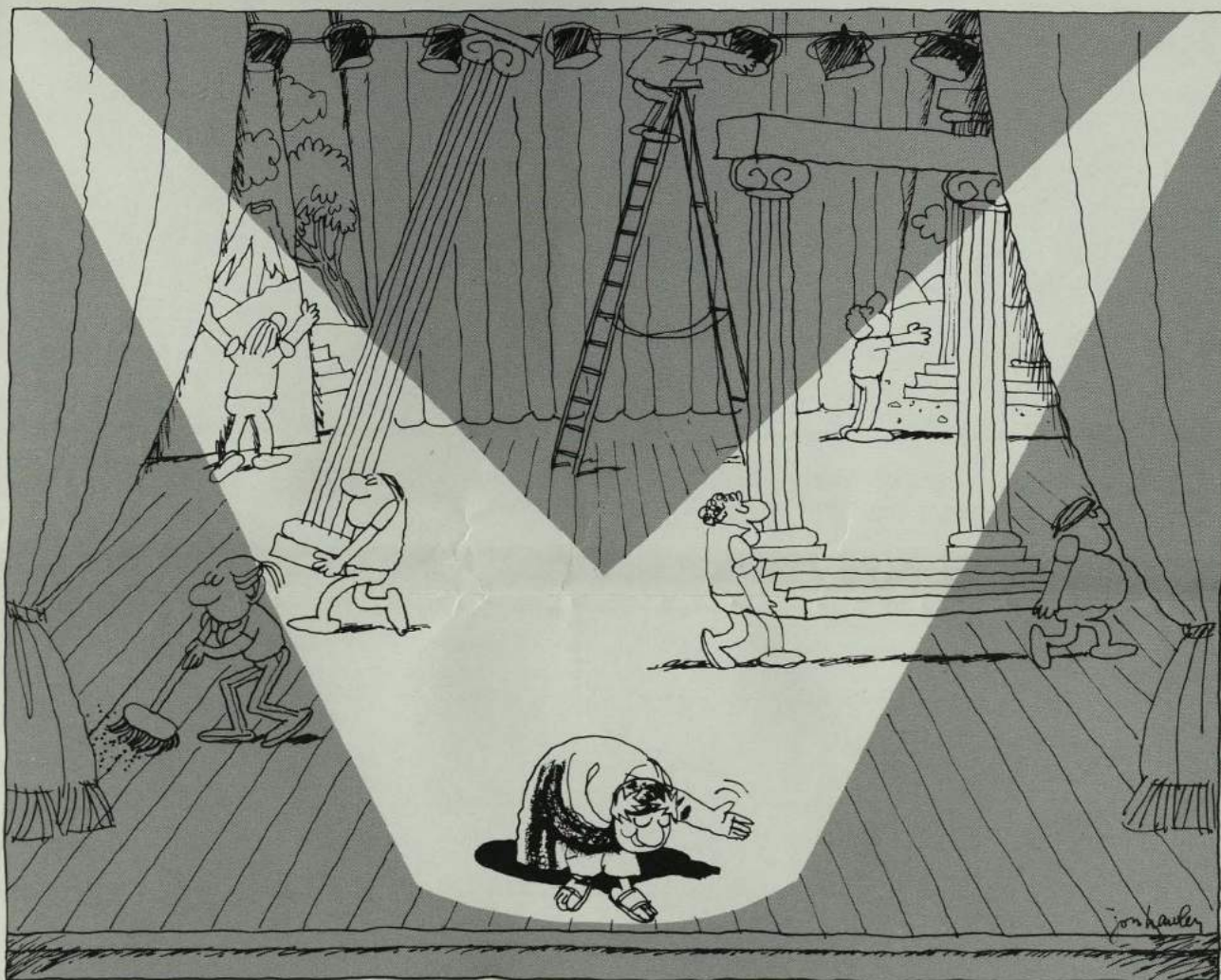
Prices:	G.P.	T.M.	Pens/Stud
Fiddler on the Roof	\$29.00	\$25.00	—
Norma	\$45.00	\$38.00	—
Other operas	\$36.00	\$32.00	—

LITTLE SHOP OF HORRORS — THEATRE ROYAL

Performances: Thursday November 8 to Saturday December 1
Monday to Thursday at 8.30 p.m.
Friday and Saturday at 6 p.m. & 9 p.m.

Prices:	T.M.	G.P.	Pens/Stud
Mon to Thurs	\$16.00	\$18.50	\$11.50
Fri & Sat at 6 p.m.	—	\$19.50	\$12.50
Fri & Sat at 9 p.m.	—	—	\$11.50 (6 p.m.)
* Nov 9 6 p.m. & 9 p.m.	\$13.50**	—	\$12.50 (Evg)
* Nov 12	—	—	—

**Members may purchase as many tickets as they wish at these performances.



Great Performances.

Give the gift of year-round theatre. Any friend, relative or business associate will appreciate your unique gift of Trust membership. The Trust will send the new member a distinctive card with your name and gift message or if you prefer, we will send you the card for personal presentation.

SEND TO: A.E.T.T., PO BOX 137 KINGS CROSS, 2011. PHONE: 357 1200

☐ I would like to send a Gift Membership (\$20) to:

MR/MRS/MISS/MS FULL NAME - PLEASE PRINT

ADDRESS

POSTCODE

HOME PHONE

BUSINESS PHONE

☐ Please send the card directly with the following gift message _____

☐ Please send the gift card to me for personal presentation.

SENDER'S NAME

ADDRESS

POSTCODE

Form of Payment:

☐ Charge my Bankcard No. _____ ☐ \$20 Cheque enclosed

EXPIRY DATE

AUTHORISED SIGNATURE



AUSTRALIAN ARTS DIARY

Please send me:

..... copies @ \$12.00=\$

(includes packaging and postage)

NAME A.E.T.T. No.

ADDRESS

POSTCODE TEL (day) (night)

I enclose my cheque/p.o. (made payable to A.E.T.T.)

for \$ together with s.a.e.

FILMS

Please send me

HOYTS ENTERTAINMENT CENTRE

..... vouchers @ \$5.00=\$

VILLAGE THEATRES

..... vouchers @ \$5.00=\$

GREATER UNION THEATRE

..... vouchers @ \$5.50=\$

NAME A.E.T.T. No.

ADDRESS

POSTCODE TEL (day) (night)

I enclose my cheque/p.o. (made payable to A.E.T.T.)

for \$ together with s.a.e.

THE AUSTRALIAN OPERA — SYDNEY OPERA HOUSE

N.B. Members are restricted to two tickets each at T.M. price

Please send me:

..... tickets @ \$ = \$

..... tickets @ \$ = \$

For (name of opera)

Day & date

..... tickets @ \$ = \$

..... tickets @ \$ = \$

For (name of opera)

Day & Date

NAME A.E.T.T. No.

ADDRESS

POSTCODE TEL (day) (evg)

I enclose my cheque/m.o. (made payable to Australian Opera) with

s.a.e. for return of tickets.

THE AUSTRALIAN OPERA — SYDNEY OPERA HOUSE

Performances:

Fiddler on the Roof — December 31

Tosca — January 30

Jenufa — January 25 & 28

Don Pasquale — February 11

Norma — January 29

Prices:	G.P.	T.M.	Pens/Stud
Fiddler on the Roof	\$29.00	\$25.00	—
Norma	\$45.00	\$38.00	—
Other operas	\$36.00	\$32.00	—

LITTLE SHOP OF HORRORS — THEATRE ROYAL

N.B. Members are restricted to two tickets at T.M. price except**

Please send me

..... tickets @ \$13.50 = \$

..... tickets @ \$16.00 = \$

..... tickets @ \$18.50 = \$

..... tickets @ \$19.50 = \$

..... tickets @ \$11.50 = \$

..... tickets @ \$12.50 = \$

For (day & date)

(1st pref) (2nd pref)

NAME A.E.T.T. No.

ADDRESS

POSTCODE TEL (day) (night)

I enclose my cheque/p.o. (made payable to Theatre Royal) for

\$ together with s.a.e.

Delete as
applicable

- Evg
- Early evg
- Stalls
- Dress Circle

LITTLE SHOP OF HORRORS — THEATRE ROYAL

Performances:

Thursday November 8 to Saturday December 1

Monday to Thursday at 8.30 p.m.

Friday and Saturday at 6 p.m. & 9 p.m.

Prices:	T.M.	G.P.	Pens/Stud
Mon to Thurs	\$16.00	\$18.50	\$11.50
Fri & Sat at 6 p.m.	—	\$19.50	\$12.50
Fri & Sat at 9 p.m.	—	—	\$11.50 (6 p.m.)
** Nov 9 6 p.m. & 9 p.m.	\$13.50**	—	\$12.50 (Evg)
** Nov 12	—	—	—

**Members may purchase as many tickets as they wish at these performances.

NIMROD THEATRE — IL MAGNifico

N.B. Members may purchase as many tickets as they wish.

Please send me

..... tickets for Monday November 12 @ \$13.90=\$

..... tickets for Tuesday November 13 @ \$13.90=\$

..... tickets for Wednesday November 14 @ \$13.90=\$

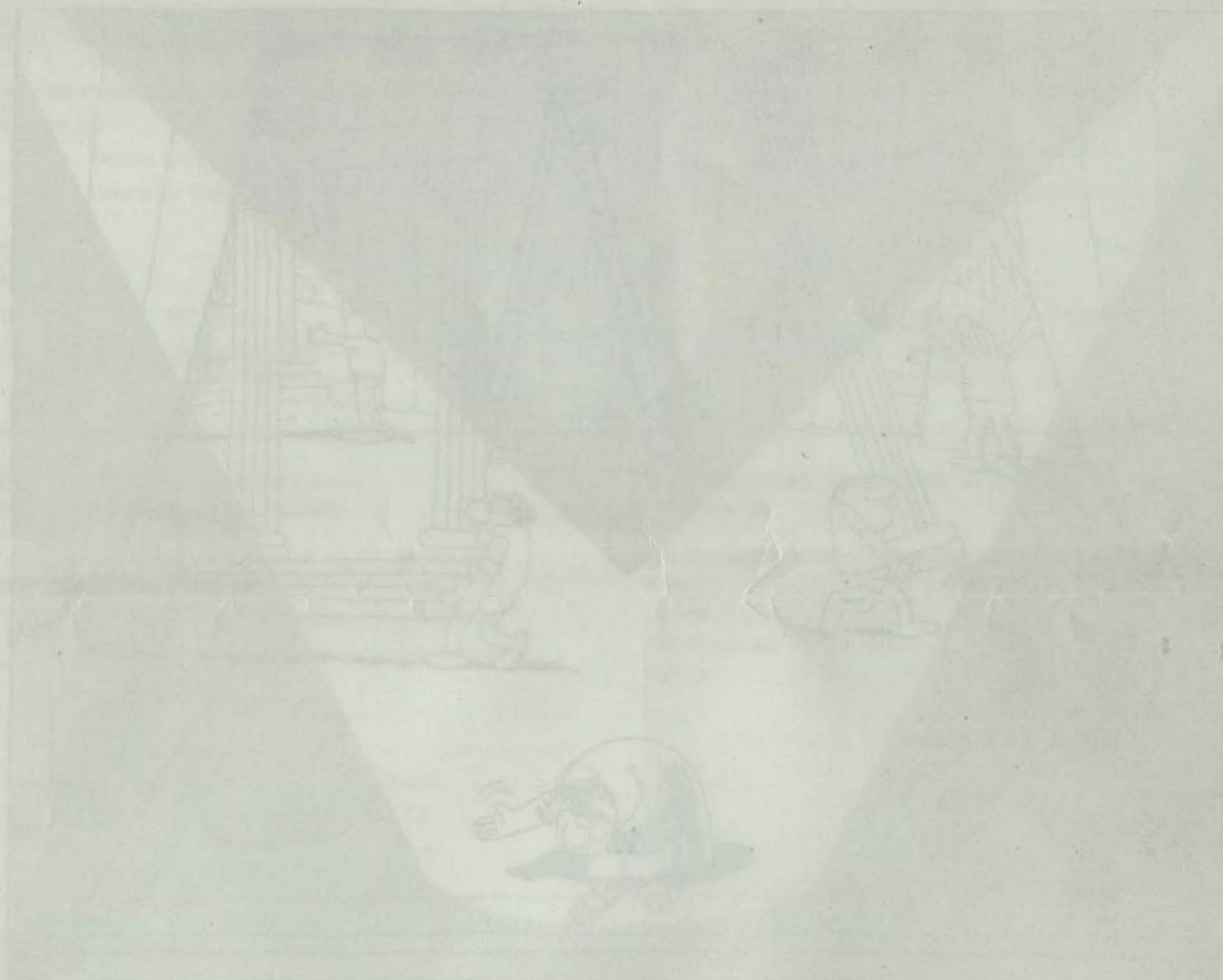
NAME A.E.T.T. No.

ADDRESS

POSTCODE TEL (day) (night)

I enclose my cheque/p.o. (made payable to Seymour Centre)

for \$ together with s.a.e.



Great Performances.

Give the gift of year-round pleasure. Any friend, relative or business associate
 will send you the card for personal prescription.

☐ I would like to send a CD Membership. \$10.00

☐ Please send me a card that will send the following gift message:

☐ Please send me the gift card to order from the prescription.

Form of Payment: ☐ Charge my bank card No. ☐ XPO Card Member

Signature: _____

Address: _____

City: _____ State: _____ Zip: _____

Phone: _____