



TRUST NEWS

RICHARD HARRIS IN CAMELOT

The lavish Broadway stage production of Lerner and Loewe's famous musical CAMELOT is to be presented in Australia later this year. It will star Richard Harris who both created, staged, directed and starred in the original Broadway production. Other U.S. principals will appear alongside Australian principals, chorus and orchestra. Two key roles to be cast in Australia are that of Lady Guenevere and of Horrid — an old English sheepdog — which will present quite a challenge for local casting agencies!

Richard Harris first played King Arthur in the film version of CAMELOT in 1967 for which he earned the Golden Globe Award for Best Actor of the Year. The Broadway stage production opened in 1980 and later played at New York's Wintergarden Theatre before going on national tour. Richard Harris has a string of stage, film and television credits which have won him numerous awards. In addition he has a book published of his poetry on the bestseller list, a novel, a play and a semi-autobiography entitled "People I Did, People I Didn't".

CAMELOT will play in 'The Lyric' mode of the Entertainment Centre which has a seating capacity of approximately 3,500. The season runs from November 28 to December 8. As bookings have already opened to the general public, we have set aside tickets for Members on Tuesday, December 4 and Wednesday, December 5. These tickets are positioned at the back of the first concourse and the front of the second concourse (i.e. between 15 and 20 rows from the stage). A \$10 discount applies to these tickets and Members may purchase up to ten tickets each.

Members who are unable to attend on those nights or who have specific seating requirements may purchase tickets at a \$5.00 discount throughout the theatre (subject to seat availability) any performance Monday to Thursday and matinees (except Saturday). Your booking coupon is enclosed. A pre-theatre dinner is planned for Wednesday, December 5 — more details September Trust News.

Photo: Richard Harris as King Arthur.

REG LIVERMORE REVIVES ROCKY HORROR SHOW

It is now ten years since Reg Livermore gained star status in Australia through his portrayal of the role of Frank-n-Furter in the first Australian production of the ROCKY HORROR SHOW. A new production starring Reg Livermore and directed by Daniel Abineri (who played Frank-n-Furter in the 1981 production) will be mounted at the Theatre Royal later this month. It will co-star Stuart Wagstaff as the narrator.

Written by Richard O'Brien, a New Zealand expatriate, the show is a gorgeous and affectionate camping spoof of the genre of 50's horror movies, laced with rock music that fits the period. As Richard O'Brien says "There's . . . no comment of any sort really . . . who needs comment when you've got a transvestite - science - fiction - rock - and - roll - B - movie musical?"

Trust Member nights when a \$4 discount applies are Monday August 27 and Tuesday August 28. At other performances during the first three weeks of the season (except Friday and Saturday at 9 p.m.) a \$2 concession applies. Members may purchase up to 10 tickets each at these performances.



Photo: Reg Livermore.



DIARY UPDATE

AUGUST

- 13 — Fashion Parade and Luncheon, Wentworth Hotel
- 21 — Torch Song Trilogy, Her Majesty's
- 26 — Sunday lunch at Manly
- 27, 28 — ROCKY HORROR SHOW, Theatre Royal

SEPTEMBER

- 3, 4 — NIGHT MOTHER, Footbridge
- 12 — Drinks & Eats at the Trust
- 6, 11, 19 — BORN YESTERDAY, S.T.C.
- 10, 11, 12 — KING LEAR, Nimrod
- 17, 18, 19 — PERFORMING SEALS, Nimrod
- 19, 21 — DIARY OF ANNE FRANK, Phillip St.



Trust News is the newsletter of the Australian Elizabethan Theatre Trust which is mailed free of charge to its 5000 Sydney members, eight times per year. The price concessions and advance booking facilities offered in this newsletter are available only to members of the A.E.T.T. Those wishing to join the Trust should complete the New Member Application form on the enclosed Trust Member Booking Coupons and return it to the Trust for processing.

Anyone who would like further information about the facilities available to Trust Members should ring the membership office on 357 1200. The Australian Elizabethan Theatre Trust, P.O. Box 137, Kings Cross, N.S.W. 2011.

member activities

ANNUAL FASHION PARADE AND LUNCHEON

Monday August 13 at 12 noon
Sheraton-Wentworth Hotel

A final reminder about this very popular event with fashions by Giselle Ert of Killara and Victorian style costumes from the Trust's Costume Hire Department. Special guest is Amanda Muggleton with Noel Ferrier comper. Tickets are \$25 each. Please ring 357 1200 for late bookings.

SUNDAY LUNCH AT MANLY

Sunday August 26 at 12 noon
Pier Restaurant, West Esplanade, Manly

Following the success of our first Sunday lunch at the Waterfront Restaurant, we invite members and friends to join us at the Pier Restaurant later this month. Following the lunch there is an optional tour of the historic quarantine station at North Head which has just recently been opened to the public. The tour lasts 1½ hours and you'll need to bring walking shoes! Cost for luncheon and the tour is \$22.50.

DRINKS AND EATS AT THE TRUST

Wednesday September 12 at 6 pm
153 Dowling Street, Potts Point

Join us for early evening refreshments in the Trust's Board Room and hear some more about the Trust's activities! Director of Orchestras Bill Reid and his wife Dorothy Ray who is in the Opera Chorus will talk to us about their busy musical lives. Tickets are \$5 each and a good time is guaranteed for all!

RACE DAY AT RANDWICK

Wednesday September 26 at 11.30 am

The transfer of the spring race meeting to Warwick Farm last year caused the cancellation of our Race Day and disappointed many Members. They'll be glad to know that this year it's on again at Randwick and once again we can invite Members and their friends to join us for luncheon in the Members stand. Tickets are \$18 each which includes entry to the Members stand.

30TH ANNIVERSARY DINNER

Friday September 28 at 7.30 p.m.
Sheraton-Wentworth Hotel

Members from interstate and theatrical personalities who've been involved with the Trust over the years will join us in a celebratory dinner of the Trust's 30 years. It will be a very special evening for the Trust and we hope that many Members and friends will join us for this black-tie evening. Tickets are \$35 each.

BLUE MOUNTAINS TOUR

Sunday September 30

To entertain our interstate guests we are arranging a day in the Blue Mountains and Sydney Members are very welcome to join us. Departure is from the Wentworth Hotel at 9 am, with pick ups on the North Shore and Parramatta Road. We'll be travelling via the Macquarie towns of Windsor and Richmond to Kurrangong Heights and then on to Medlow Bath where we'll have lunch in the charming old dining room of the Chalet Restaurant. The afternoon will be spent sight-seeing at Katoomba, and Leura before returning to Sydney in early evening. Cost which includes bus, morning tea, and luncheon is \$39.

DINNER AND OPERA Wednesday October 10 Sydney Opera House

We still have tickets remaining both to see the Australian Opera's production of A MID-SUMMER NIGHT'S DREAM and to attend the dinner at the Opera House beforehand. Tickets are \$40 which includes both the opera and dinner.

MELBOURNE CUP ORIANA CRUISE

November 3 to 9

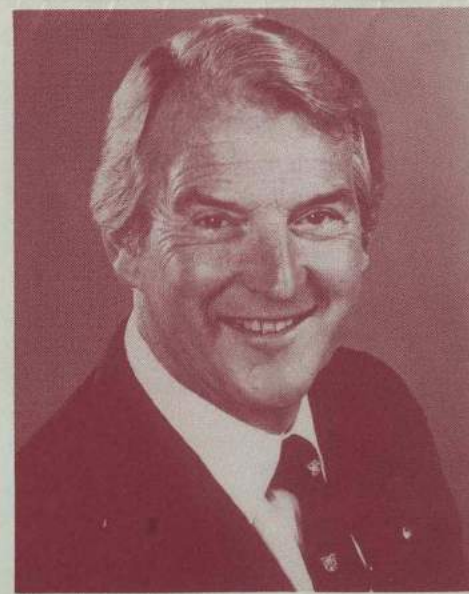
Due to cancellations we now have a limited number of berths available for this six day cruise to Melbourne for the Cup. The Oriana visits Hobart en route and during this full day stop we'll be travelling by bus through Tasmania to Launceston visiting historic places en route. The tour includes reserved tickets for the Cup with champagne lunch and the price is approximately \$1100 per person depending on the cabin position. Please contact Shirley Hay on 357 1200.

ROGER CLIMPSON RETURNS TO THE STAGE

Roger Climpson will play the lead role of Mr Frank in Phillip Street Theatre's revival of THE DIARY OF ANNE FRANK. Winner of the 1956 Pulitzer Prize and the Critics Circle Award the story of Anne Frank is one of the most heartwarming and exciting stories ever told. Her story starts in 1942 when as a thirteen year old she went into hiding with her parents, sister and four other people in the sealed-off back rooms of an Amsterdam office building when the Nazi invaders intensified their persecution of Jews. The play is the story of their life there and the ultimate tragic conclusion.

Trust Member Nights are Wednesday September 19 and Friday September 21 at the special price of \$8.90 or there is a special price for those nights of \$20 for both dinner and the show. This price does not include wine but the restaurant, which opens at 6 p.m., is B.Y.O. At other performances (Monday to Friday at 11 a.m. and Wednesday, Friday and Saturday at 8 p.m.) a \$1 concession applies.

Photo: Roger Climpson.



SIDETRACK AT THE SAILORS HOME THEATRE

"Sidetrack Theatre is a winner. Sharp, witty, honest and pertinent, this exciting troupe from Sydney's industrial suburbs deserves top priority. Sidetrack must be one of the most valid theatre groups in this country."

So said the Adelaide Advertiser as it nominated Sidetrack Theatre's Adelaide Festival production as one of the three best productions of the 1984 Festival alongside MIZU NO EKI from Japan and MACU-NAIMA from Brazil.

Sidetrack Theatre normally performs in factories, workplaces, schools, community centres and town halls — it takes theatre to the people but this month it is giving its first in-house public season at the Sailors Home Theatre, presenting the company's own creation DAY TO DAY. It is a rare opportunity to see the work of this remarkable company. Macabre, bizarre, comic and finally disturbingly realistic, DAY TO DAY is set in an almost real department of social services. It starts with what appears to be a comic representation of the everyday lives of office workers and moves on to explore what lies beneath the apparently banal exterior. DAY TO DAY is directed by Don Mamouny assisted by Jose Farinas and continues until August 25. AETT concession \$1. Bookings on 27 3274.

For the school holidays THE MARIONETTE THEATRE OF AUSTRALIA will mount a return season of AESOP'S FABLES at the Sailors Home Theatre. Devised by Richard Bradshaw the puppet play includes well known characters from eighteen fables woven into one composite piece. The production is suitable for 5 to 12 year olds.



Tony Sheldon (Torch Song Trilogy)

TORCH SONG TRILOGY RETURNS

Following the Australian premiere season of TORCH SONG TRILOGY at the Seymour Centre last year the production has had a highly successful Melbourne season playing for seven consecutive months at the Universal Theatre. Sydney Members who missed seeing this poignant comedy will have a second opportunity when it opens at Her Majesty's Theatre on August 20. The production, mounted by J. C. Williamson, stars Tony Sheldon in the central role of Arnold, a 27 year old drag queen. The play written by Harvey Fierstein, follows Arnold's quest for happiness, his search for meaningful relationships and his longing for a son.

Trust Member night for TORCH SONG TRILOGY is Tuesday August 21 when a \$4 concession applies. At other performances a \$1 concession applies.

NIMROD OPENS AT THE SEYMOUR CENTRE

Members may have read in the media that with its current productions Nimrod's occupancy of the old 'salt and tomato sauce factory' in Surry Hills comes to an end and a new era begins at the Seymour Centre. The Upstairs theatre at Surry Hills seats fewer than 300 people and with the increasing costs of production it was becoming necessary either to reduce the scale of productions or to increase the price of tickets — options which were both unacceptable to Nimrod.

Nimrod opens at the York Theatre, Seymour Centre with **KING LEAR** on September 5 and with **PERFORMING SEALS** on September 15 in the Everest Theatre. Shakespeare's great tragedy will be directed by Aubrey Mellor with designs by Richard Roberts. It will bring together some of Australia's greatest acting talent — John Bell, Judy Davis and Colin Friels. Trust Member nights when a \$3 concession applies are Monday September 10, Tuesday September 11 and Wednesday September 12.

PERFORMING SEALS is a new Australian play by Barbara Pepworth which is set in the Cross where 17 year old Sonny lives with his best friend who is a stripper. It is a stark and powerful play built around a bizarre inversion of the traditional "happy family". Trust nights are Monday September 17, Tuesday September 18 and Wednesday September 19 when a \$3 concession applies. Your booking coupon is enclosed.

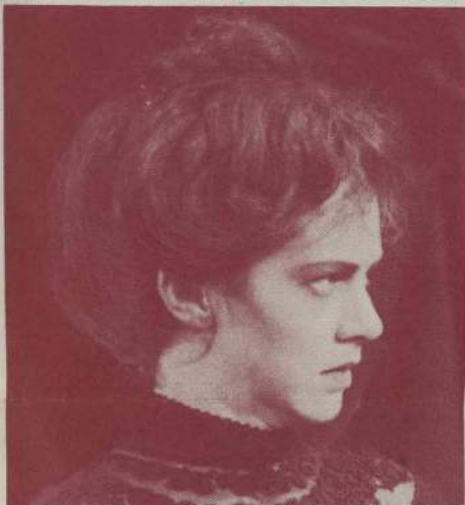


Photo: Judy Davis.

CASABLANCA SEASON DEFERRED

The season of **CASABLANCA** which was scheduled to open at Her Majesty's Theatre in July has been deferred until later in the year due to casting difficulties. Trust Members will be advised as soon as revised plans have been finalised.

FIDDLER ON THE ROOF

Following a season at the Opera House as part of its subscription season, The Australian Opera will present the musical **FIDDLER ON THE ROOF** starring Hayes Gordon at Her Majesty's Theatre in November. Concessions will be available to Trust Members and will be announced in Trust News as soon as prices have been confirmed.

NEW SUBSCRIPTION SEASON AT MARIAN STREET

Marian Street Theatre's new subscription season starts off with a new Alan Ayckbourn play, **SEASON'S GREETINGS**. As the title implies it's set at Christmas time but in typical Ayckbourn style it's a Christmas that goes wrong! Director John Krummel who is setting the play in Australia has assembled an all star cast which includes Ron Haddrick, Judi Farr, Kerry McGuire and Jennifer Hagan. Trust Member nights when a \$5 discount applies are Sunday September 30 (5 p.m.) and Tuesday October 2. Details of the remainder of the season will be included in September Trust News.



Photo: Carol Raye, Diane Cilento and Anna Lee.

TONY AWARD WINNING PLAY AT THE FOOTBRIDGE

John Pielmeier's Tony award winning play **AGNES OF GOD** is a thriller with a difference. Based on a real incident, it is set inside a convent where a young nun, Sister Agnes, has been accused of killing the baby she bore secretly one night in the convent. The convent assigns a psychiatrist to examine the nun and she almost immediately clashes with the Mother Superior who believes that only God could have fathered the child.

AGNES OF GOD ruffled feathers among Catholics and psychiatrists alike when it opened on Broadway in 1982 but the critics were unanimous in describing it as gripping, fascinating theatre.

The Australian production will be directed by John Tasker who recently directed the highly successful production of **CARAVAN** for the Ensemble and **DUET FOR ONE** with Helen Morse. One of Australia's foremost international actresses, Diane Cilento, makes a rare stage appearance as the psychiatrist with Carol Raye as Mother Miriam. Young Sydney actress Anna Lee who is a graduate of the Ensemble Theatre plays the role of Agnes.

Trust Member nights when a \$4 concession applies are Monday September 3 and Tuesday September 4. At other performances (except Saturday evenings) a \$2 concession applies.

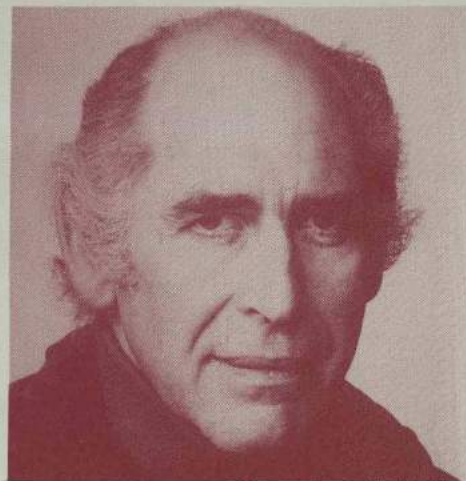


Photo: Ron Haddrick.

THE KINGS SINGERS RETURN

Those masters of vocal harmony, The King's Singers are touring Australia once again and will play in the Concert Hall, Sydney Opera House on September 19. Their programme will include a tribute to the Comedian Harmonists as well as selections from their more classical repertoire. AETT discount is \$1. Your booking coupon is enclosed.



Photo: The King's Singers.

A NEW PUPPET COMPANY FOR SYDNEY

Four former members of the Marionette Theatre of Australia have joined together to form the Sydney Puppet Theatre which, with assistance from the Theatre Board of the Australia Council, will present its first season in the August school holidays in the Anzac Auditorium, College Street.

ALICE DOWN UNDER was devised by the company and is based on Lewis Carroll's 'Alice in Wonderland' but as the name suggests, it is set in Australia, making it more relevant to Australian audiences.

Down under, Alice meets many of the Wonderland favourites, like the White Rabbit, the Mad Hatter and the Caterpillar who has given up smoking and taken up computers. There are a number of other surprises too, like Bunyip and a huge tap-dancing Chook. Designed by Lucy Donnellan, directed by Chris Jannides and written, built and performed by the company, **ALICE DOWN UNDER** runs from August 27 to September 9 playing 11 a.m. and 2 p.m. Monday to Friday and 1 p.m. and 3.30 p.m. Sundays. Trust Member discount is \$1 (adults only). Bookings on 92 1750 or Mitchells Bass.

SHOWGUIDE

** indicates concessions which may be applied to each of two tickets any performance (unless otherwise stated)

FOOTBRIDGE THEATRE (692 9955)

University of Sydney, Parramatta Road
Night Mother by Marsha Norman
Until August 25
Agnes of God by John Pielmeier
Commences August 30
**\$2.00
\$4.00 (September 3, 4)

GENESIAN THEATRE (909 2928)

470 Kent Street, Sydney
Trelawney of the Wells by Arthur Pinero
Until August 25
Saturday, Sunday, Monday by Eduardo di Filippo
Commences September 8
**\$1.00

GRIFFIN THEATRE COMPANY (33 3817)

Stables Theatre, 10 Nimrod Street, Kings Cross
Hanging Together by Gordon Graham
Until August 12
Wet Dreams by Kathy Lette
Commences August 21
**\$1.00

KINSELAS (331 3100)

383 Burke Street, Darlinghurst
For Gentlemen Only by Eve Merriam
Commences July 30
**\$2.00 (off show/meal package)

MARIAN STREET THEATRE (498 3166)

Marian Street, Killara
Machiavelli, Machiavelli by John Upton
Continuing
**\$1.00 (Mon-Thurs & Sun)

NEW THEATRE (519 3403)

542 King Street, Newtown
Here Comes Kisch! by Mona Brand
Continuing
**\$1.00

NIMROD THEATRE (699 5003)

500 Elizabeth Street, Surry Hills
Upstairs: The Boiling Frog by Alison Lyssa
Until August 26

SEYMOUR CENTRE (692 0555)

Cnr. Cleveland Street & City Road
York Theatre: King Lear by William Shakespeare
Commences September 5

Everest Theatre: Performing Seals by

Barbara Pepworth
Commences September 15
**\$1.00 (Mon-Thurs & Sat mat)
\$3.00 (Sept 10, 11 & 12 Lear)
(Sept 17, 18 & 19 Seals)

OFF BROADWAY THEATRE (692 0964)

73-79 Bay Street, Broadway
The Abdication of Queen Elizabeth II
by Mark Stow Smith
Until September 8
**\$1.00

THE PERFORMANCE SPACE (698 7235)

199 Cleveland Street, Redfern
Darc Swan: Contemporary Dance
August 21 to September 2
Jara by Guy Morrison
Commences September 11
**\$1.00

PHILLIP STREET THEATRE (232 8570)

169 Phillip Street, Sydney
The Shifting Heart by Richard Beynon
Until August 18

The Diary of Anne Frank
Commences September 20
**\$1.00

\$6.00 (September 19 and 21)
Goldilocks and the Three Bears
August 25 to September 8
**\$1.00

Q THEATRE (047 21 5735)

Cnr. Railway & Belmore Sts., Penrith
Gladbags by Patricia Johnson
Commences August 31
**50c

SYDNEY/SAILORS HOME (27 3274)

106-108 George Street, Sydney

Sidetrack Theatre

Day to Day
Until August 25
**\$1.00

Marionette Theatre

Aesop's Fables by
Richard Bradshaw
August 27 to September 9
**50c

SYDNEY OPERA HOUSE (2 0588)

Concert Hall
The King's Singers
September 19
**\$1.00

SYDNEY THEATRE COMPANY

Drama Theatre, S.O.H.
Born Yesterday by Garson Kanin
Commences August 8
**\$1.00 (Mon-Thurs & Sat mat)
\$3.00 (September 6, 11 and 19)

THEATRE ROYAL (231 6111)

King Street, Sydney
The Rocky Horror Show by
Richard O'Brien
Commences August 25
**\$2.00 (except Fri/Sat 9 p.m.)
\$4.00 (August 27/28)

WHAT'S ON IN CANBERRA (A.E.T.T. concession \$1.00)

Play five in **THEATRE A.C.T.'s** 1984 season is a new musical by Tim Gooding called **KING OF COUNTRY**. The musical traces the development of country music in Australia through three generations of a country music family and will be presented in cabaret style. The season at the A.N.U. Arts Centre is from August 24 to September 16.

CANBERRA DANCE ENSEMBLE's

season at the Playhouse from August 8 to 11 is titled **DRIFTERS** and features new works by three Australian choreographers — Jennifer Barry, Kai Tai Chan and Jennifer Burridge. Canberra Dance Ensemble is a community dance company which aims to present two theatre seasons a year. They also make one tour a year and last year visited the Edinburgh Festival.

Third year students at **N.I.D.A.** will present their season of plays entitled **SEA CHANGES** in Canberra at the Playhouse from August 14 to 18. The plays directed by Nick Enright are Shakespeare's **PERICLES** and **COMEDY OF ERRORS**.

During the school holidays (August 27 to September 1) **JIGSAW THEATRE COMPANY** will present a childrens theatre piece in the Rehearsal Room at the Canberra Theatre Centre. Called **SYCORAX HAS COBWEBS**, it is written and directed by John Senzucuk and designed by Judith Hoddinott. Jigsaw's theme for the year is the shape of things to come and the play is about two people who receive a computer and discover a character locked inside it.

Theatre A.C.T.'s production of **CHRISTIE IN LOVE** by Howard Brenton concludes its **LUNCHTIME THEATRE** season at the Canberra Theatre Centre on August 10. Further seasons of lunchtime theatre will be presented in September by Theatre A.C.T. (commencing 3rd and 24th September) and Human Veins Dance Theatre (September 17 to 21).

CANBERRA PHILHARMONIC SOCIETY

will present a Gilbert and Sullivan Double Bill of **TRIAL BY JURY** and **THE SORCERER** at the Canberra Theatre from August 9 to 18. Dennis Olsen will appear in both productions as well as directing **THE SORCERER**. **TRIAL BY JURY** will be directed by Eileen Gray and musical director for both productions will be Leonard Dommatt.

RING AROUND THE MOON is currently playing Thursday to Saturdays at **CANBERRA REP** and continues until August 25. Written by French playwright Jean Anouilh, it is a sparkling comedy centred around two couples — one gentle and naive, the other cool and cynical — who experience a series of misunderstandings.

IN BRIEF

(for AETT concession and phone numbers for booking, see showguide)

The next production at the **GRIFFIN THEATRE** is a new play by Kathy Lette, author of **PUBERTY BLUES**. Called **WET DREAMS** it is about young Australian women in the 80's and the gulf between their beliefs and behaviour. The production will be directed by Lex Marinos and opens on August 21 at the Stables Theatre, Kings Cross.

Darc Swan, the contemporary dance company founded by Chris Jannides, former member of New Zealand's leading contemporary dance company, Limbs, will present a season at the **THE PERFORMANCE SPACE** from August 21 to September 21. It will be followed on September 11 by **JARA**, written by Guy Morrison about Victor Jara, the Chilean songwriter/composer who was murdered during the Allende period. Presented by the Jara Community Association the production will be directed by Nigel Rice.

An orchestra of over 100 musicians from the ranks of the Sydney Symphony Orchestra, the Elizabethan Sydney Orchestra and freelance professional musicians are organising a **MUSICIANS FOR WORLD PEACE** concert at the Opera House Concert Hall on Sunday afternoon, August 19 at 3 p.m. The

orchestra will be conducted by Richard Bonyng and Stuart Challenger and soloists will include Dame Joan Sutherland who will sing arias from Bellini's **NORMA** and Donizetti's **LUCIA DI LAMMERMOOR**. All artists taking part will be donating their services with the aim of promoting world peace. Tickets are available from the Sydney Opera House Box Office and Mitchells Bass.

To celebrate the opening of Stage 1 of the rebuilding of the **ENSEMBLE'S** theatre, John Coburn has prepared and given a painting, entitled **Carnival**, to the theatre. 150 silk screen paintings of the painting have been prepared by the artist's wife Barbara and their son Daniel and are offered to Members at \$395 plus \$10 for postage and packing. Please contact the Ensemble on 929 8877 to obtain a brochure.

Nominations are being sought for **THE BHP AWARDS FOR THE PURSUIT OF EXCELLENCE**. Nominations will be accepted in six categories; commerce, industry and management; community service and welfare; environment; literature and the arts; rural development and science and technology. The awards are aimed at seeking out and identifying men and women from a wide range of backgrounds and vocations, whose efforts may have gone unrecognised outside their special area of endeavour and whose examples could become an inspiration to others. Further information can be obtained from the BHP office in Sydney.

TELEPHONE BOOKINGS

We remind Members that they have automatic membership of Mitchells-Bass Hotline service. Ring 266 4826 and state your ticket requirements and your AETT Membership No. Tickets can be charged to either your Grace Bros account, Bankcard, or Diners Club and are either mailed to you (if time permits) or left at the theatre for collection. Tickets can be purchased at Trust Member prices but please note a \$1.50 surcharge per ticket applies to the service. For advance bookings Members should still use their Trust member booking coupons.

TRUST MEMBER BOOKING COUPONS — SUPPLEMENT TO TRUST NEWS — AUGUST 1984 VOL. 8 No. 5

Please tear off coupon and mail with individual cheques and stamped addressed envelopes to Trust Members Bookings. The Australian Elizabethan Theatre Trust P.O. Box 137 Kings Cross, N.S.W. 2011. Please print all information. For easier reading performance and price information is given alongside booking coupon.

PLEASE READ BOTH SIDES BEFORE CUTTING

Key: T.M. = Trust Member
G.P. = General Public
s.a.e. = stamped addressed envelope

PLEASE NOTE: If stamped addressed envelope is not enclosed tickets will be left at the box office for collection.

ROCKY HORROR SHOW — THEATRE ROYAL

N.B. Members are restricted to ten tickets at T.M. prices any performance.

Please send me

.....tickets @ \$16.50 = \$
.....tickets @ \$14.50 = \$
.....tickets @ \$11.50 = \$
.....tickets @ \$18.50 = \$

Delete as applicable
8.30/9 p.m.
6 p.m.
Stalls
Dress Circle

For (day & date)

.....(1st pref)(2nd pref)

NAME.....A.E.T.T. No.....

ADDRESS.....

POSTCODE.....TEL (day).....(night).....

I enclose my cheque/p.o. (made payable to Theatre Royal) for \$..... together with s.a.e.

NEW MEMBER APPLICATION

I would like to become a member

MR. MRS. MISS.....

ADDRESS.....

POSTCODE.....TEL (day).....(night).....

I enclose my cheque (made payable to A.E.T.T.) or please charge my Bankcard No. ☐☐☐☐☐☐☐☐☐☐☐☐☐☐☐☐

Expiry date.....

The Amount of \$20

Usual signature.....

N.B. Membership valid for 12 months from date of joining.

ROCKY HORROR SHOW — THEATRE ROYAL

Performances: Monday August 27 to Saturday September 15
Monday to Thursday at 8.30 pm
Friday & Saturday 6 & 9 pm

Prices:	T.M.	G.P.	Pens/Stud
August 27 & 28	\$16.50*	\$18.50	\$11.50*
	\$14.50	\$18.50	\$11.50*

*except Friday and Saturday 9 p.m.

CAMELOT — LYRIC THEATRE

N.B. Members are restricted to two tickets at T.M. price except**

Please send me

.....tickets @ \$26.00 = \$
.....tickets @ \$21.00 = \$
.....tickets @ \$31.00 = \$

Delete as applicable
Evg
Mat

For (day & date)

.....(1st pref)(2nd pref)

NAME.....A.E.T.T. No.....

ADDRESS.....

POSTCODE.....TEL (day).....(night).....

I enclose my cheque/p.o. (made payable to Entertainment Centre) for \$..... together with s.a.e.

CAMELOT — LYRIC THEATRE

Performances: Wednesday November 28 to
Saturday December 8 at 8 pm

Matinees: Thursday November 29,
Wednesday December 5 & Saturday
December 8 at 2 pm

Prices:	T.M.	G.P.	Pens/Stud
**Dec 4/5	\$26.00*	\$31.00	—
	\$21.00		

**Members may purchase up to ten tickets each for these special performances.

*Concession does not apply to performances on Friday or Saturday (including Matinee).

THE DIARY OF ANNE FRANK — PHILLIP ST THEATRE

N.B. Members are restricted to two tickets at T.M. prices. Except **

Please send me

.....tickets @ \$20.00 = \$
.....tickets @ \$13.90 = \$
.....tickets @ \$14.90 = \$
.....tickets @ \$ 8.90 = \$

Delete as applicable
Evg
Mat

For (day & date)

.....(1st pref)(2nd pref)

NAME.....A.E.T.T. No.....

ADDRESS.....

POSTCODE.....TEL (day).....(night).....

I enclose my cheque/p.o. (made payable to Phillip St. Theatre) for \$..... together with s.a.e.

THE DIARY OF ANNE FRANK — PHILLIP ST THEATRE

Performances: Commence Tuesday September 18
Monday to Friday at 11 a.m.
Wed, Fri, Sat at 8 p.m.

Prices:	T.M.	G.P.	Pens/Stud
	\$13.90	\$14.90	\$ 8.90

**Sept 19 & 21 \$ 8.90
(evg) \$20.00 (Dinner & Show)

**Members may purchase up to ten tickets on these special nights.

FILMS

Please send me

HOYTS ENTERTAINMENT CENTRE

..... vouchers @ \$5.00=\$

VILLAGE THEATRES

..... vouchers @ \$5.00=\$

GREATER UNION THEATRE

..... vouchers @ \$5.50=\$

NAME.....A.E.T.T. No.....

ADDRESS.....

POSTCODE.....TEL (day).....(night).....

I enclose my cheque/p.o. made payable to A.E.T.T. for \$..... together with s.a.e.

NIMROD THEATRE — KING LEAR

N.B. Members may purchase as many tickets as they wish.

Please send me

.....tickets for Monday September 10 @ \$13.90=\$

.....tickets for Tuesday September 11 @ \$13.90=\$

.....tickets for Wednesday September 12 @ \$13.90=\$

NAME.....A.E.T.T. No.....

ADDRESS.....

POSTCODE.....TEL (day).....(night).....

I enclose my cheque/p.o. (made payable to Nimrod Theatre) for \$..... together with s.a.e.

Bookings close Tuesday August 28.

AGNES OF GOD — FOOTBRIDGE THEATRE

N.B. Members are restricted to two tickets at T.M. price except**

Please send me

.....tickets @ \$12.90=\$

Delete as applicable

.....tickets @ \$14.90=\$

.....tickets @ \$16.90=\$

8 p.m.

.....tickets @ \$10.90=\$

2 p.m.

For (day & date)

.....(1st pref).....(2nd pref)

NAME.....A.E.T.T. No.....

ADDRESS.....

POSTCODE.....TEL (day).....(night).....

I enclose my cheque/p.o. (made payable to Footbridge Theatre) for \$..... together with s.a.e.

AGNES OF GOD — FOOTBRIDGE THEATRE

Performances:

Commences Thursday August 30

Monday to Saturday at 8 pm

Matinees: Wednesday & Saturday at 2 pm

Prices:

T.M.

G.P.

Pens/Stud

\$14.90

\$16.90

\$10.90

(except

Sat Evg)

**Sept 3 & 4

\$12.90

**Members may purchase up to ten tickets at T.M. price at these special performances.

THE AUSTRALIAN OPERA — SYDNEY OPERA HOUSE

N.B. Members are restricted to two tickets each at T.M. price

Please send me:

.....tickets @ \$30.00=\$

.....tickets @ \$33.00=\$

For.....(name of opera)

Day & date.....

.....tickets @ \$30.00=\$

.....tickets @ \$33.00=\$

For.....(name of opera)

Day & Date.....

NAME.....A.E.T.T. No.....

ADDRESS.....

POSTCODE.....TEL (day).....(evg).....

I enclose my cheque/m.o. (made payable to Australian Opera) with s.a.e. for return of tickets.

THE AUSTRALIAN OPERA — SYDNEY OPERA HOUSE

Performances:

Aida — September 20

Figaro — October 5

The Dream — October 10*

Fidelio — October 23

*See Member Activities for pre-theatre dinner offer.

Prices:

G.P.

T.M.

\$33.00

\$30.00

MARIAN STREET THEATRE — SEASON'S GREETINGS

N.B. Members may purchase as many tickets as they wish.

Please send me

.....tickets for Sunday Sept 30 (5 pm) @ \$10.90=\$

.....tickets for Tuesday Oct 2 @ \$10.90=\$

NAME.....A.E.T.T. No.....

ADDRESS.....

POSTCODE.....TEL (day).....(night).....

I enclose my cheque/p.o. (made payable to A.E.T.T.) for \$..... together with s.a.e.

Bookings close Friday September 21.

TORCH SONG TRILOGY — HER MAJESTY'S

N.B. Members are restricted to two tickets at T.M. prices.

Please send me

.....tickets @ \$15.90=\$
.....tickets @ \$16.90=\$
.....tickets @ \$12.90=\$
.....tickets @ \$13.90=\$
.....tickets @ \$17.90=\$

Delete as
applicable
— Evg
— Mat
— Stalls
— Dress Circle

For (day & date)

.....(1st pref).....(2nd pref)

NAME.....A.E.T.T. No.....

ADDRESS.....

POSTCODE.....TEL (day).....(night).....

I enclose my cheque/p.o. (made payable to Mitchells Bass) for

\$..... together with s.a.e.

P.T.O.

TORCH SONG TRILOGY — HER MAJESTY'S

Performances:

Monday 20 August to
Saturday September 15 at 7.30 p.m.

Matinees:

Saturday at 1.30 p.m.

Prices:

	T.M.	G.P.	Pens/Stud
Evenings (Mon to Fri)	\$15.90	\$16.90	\$12.90
(Saturday)	\$16.90	\$17.90	
**August 21	\$12.90	\$16.90	
Matinees	\$12.90	\$13.90	\$12.90

**Members may purchase up to ten tickets each for this special performance.

P.T.O.

SYDNEY THEATRE COMPANY

N.B. Members may purchase as many tickets as they wish

Please send me for **BORN YESTERDAY**

..... tickets for Thursday Sept. 6 @ \$13.90=\$
..... tickets for Tuesday Sept. 11 @ \$13.90=\$
..... tickets for Wednesday Sept. 19 @ \$13.90=\$

NAME.....A.E.T.T. No.....

ADDRESS.....

POSTCODE.....TEL (day).....(night).....

I enclose my cheque/m.o. for \$..... (made payable to S.T.C.)
with s.a.e.

THE KING SINGERS — CONCERT HALL, S.O.H.

Wednesday September 19

N.B. Members are restricted to two tickets each at T.M. price

Please send me:

.....tickets @ \$16.90=\$ (T.M. price)
.....tickets @ \$17.90=\$ (G.P. price)
.....tickets @ \$13.90=\$ (Stud/pens)

NAME.....A.E.T.T. No.....

ADDRESS.....

POSTCODE.....TEL (day).....(evg).....

I enclose my cheque/m.o. (made payable to S.O.H.) with s.a.e. for
return of tickets.

MEMBER ACTIVITIES

Please send me:

.....tickets for **Sunday Lunch at Manly** @ \$22.50=\$
(August 26)

.....tickets for **Drinks and Eats** @ \$ 5.00=\$
(Wednesday September 12)

.....tickets for **Race Day at Randwick** @ \$18.00=\$
(Wednesday September 26)

.....tickets for **30th Anniversary Dinner** @ \$35.00=\$
(Friday September 28)

.....tickets for **Blue Mountain Tour** @ \$39.00=\$
(Sunday September 30)

.....tickets for **Dinner and Opera** @ \$40.00=\$
(Wednesday October 10)

NIMROD THEATRE — PERFORMING SEALS

N.B. Members may purchase as many tickets as they wish.

Please send me

.....tickets for Monday September 17 @ \$12.90=\$
.....tickets for Tuesday September 18 @ \$12.90=\$
.....tickets for Wednesday September 19 @ \$12.90=\$

NAME.....A.E.T.T. No.....

ADDRESS.....

POSTCODE.....TEL (day).....(night).....

I enclose my cheque/p.o. (made payable to Nimrod Theatre)
for \$..... together with s.a.e.

Bookings close Tuesday September 4.

MEMBER ACTIVITIES (cont'd)

NAME.....A.E.T.T. No.....
ADDRESS.....
POSTCODE.....TEL (day).....(evg).....

I enclose my cheque/m.o. (made payable to A.E.T.T.) with s.a.e. for
return of tickets.

P.T.O.