

TRUST NEWS

GOD'S FAVOURITE COMES TO PHILLIP STREET



Neil (THEY'RE PLAYING OUR SONG) Simon's new play *God's Favourite* is to have its Australian premiere on July 1 at Phillip Street Theatre. Neil Simon has been associated with more Broadway successes than any other playwright — he is the only playwright to ever have four plays running simultaneously on Broadway — *SWEET CHARITY*, *THE ODD COUPLE*, *BAREFOOT IN THE PARK* and *STAR SPANGLED GIRL*.

GOD'S FAVOURITE has been described as "the work of a man of vision". Take a Long Island mansion — a tycoon, a wacky wife, a prodigal son, a pair of kooky tins and a weirdo claiming to be God's messenger — mix in Neil Simon's dependable, crisp, funny dialogue and you have all the ingredients of a delicious evening's entertainment.

The production will be directed by Peter Williams, and star Ron Frazer and Elaine Lee. Trust members have their choice of three special preview evenings — Thursday June 24, Friday June 25 and Tuesday June 29 when a \$5.00 concession applies. At all other performances a \$1.00 concession applies. See Trust Member Activities for details of pre theatre dinner and post the-

WARREN MITCHELL RECREATES AWARD WINNING ROLE

Warren Mitchell's performance of Willy Loman in The National Theatre of Great Britain's production of *DEATH OF A SALESMAN* won rave reviews from the London critics and earned him three prestigious best actor awards. In July he will recreate this role for Nimrod at the Seymour Centre. He will be joined by Mel Gibson as his son and Judi Farr as his wife. Mel Gibson makes his first return to Nim-

rod since he played Romeo in their production of *ROMEO AND JULIET*. He has since won the Australian Film Institute's award for best actor two year's running — for *TIM* in 1979 and for *GALLIPOLI* in 1980.

DEATH OF A SALESMAN was written by Arthur Miller in 1948, won the Pulitzer Prize for Theatre and was later filmed. There is probably no greater American play; American because in its hero it reflects so clearly American society. Willy Loman is a man who has "the wrong dreams". His dreams of buying and selling are not realistic for someone who is a commercial traveller and so his life is one continuing disappointment. Miller himself described the aim of this play as being 'to set forth what happens when a man does not have a grip on the forces of life'.

Membership Benefits

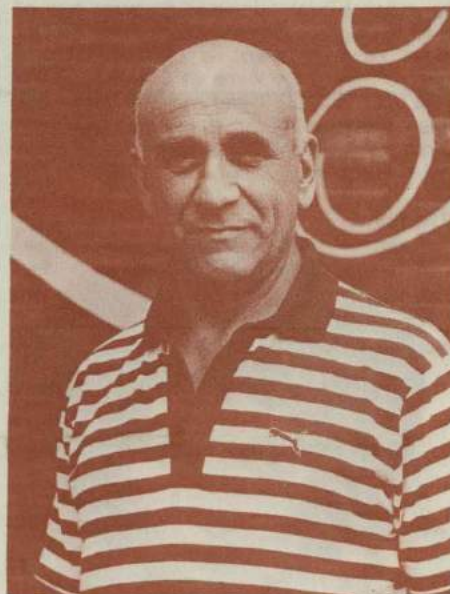
From time to time the Trust will be arranging special promotions to be sent to members by mail. The promotions will be a variety of offers ranging from luxury goods to special attractions. Our aim is to work with other organisations to develop these offers at reduced prices for Trust Members.

We appreciate however that some Members may not wish to receive communications which have not come directly from the Trust and would be grateful if these Members would let us know as soon as possible. We will then see that your name is removed from any such mailing list. Please write to The Membership Department at the address below and quote your membership number.

Australian Opera Discounts

Those Members who did not subscribe to the 1982 season of the Australian Opera may be interested to purchase tickets to single performances. "A" Reserve tickets are available to Trust Members at a \$3.00 discount for certain performances of Puccini's *TRITTICO*, *MAHAGONY*, *MANON*, *MAGIC FLUTE*, *MADAMA BUTTERFLY*, *FALSTAFF*, *PATIENCE*, *BORIS GODUNOV* and *SALOME*. Full details of dates and prices are given on the enclosed booking coupon.

atre supper on June 24. As theatre tickets are limited it would be appreciated if those members who do not wish to attend the dinner or the supper would select June 25 or June 29.



Warren Mitchell

DEATH OF A SALESMAN opens on Friday July 9, and Monday July 12 is Trust Member night when Members may purchase as many tickets as they wish for \$11.50 — a saving of \$4.40 on the normal price. See Member Activities for details of the supper following the performance. At all other performances a \$1.00 concession applies. Your booking coupon is enclosed.

Trust News is the newsletter of the Australian Elizabethan Theatre Trust which is mailed free of charge to its 5000 Sydney members, eight times per year. The price concessions and advance booking facilities offered in this newsletter are available only to members of the A.E.T.T. Those wishing to join the Trust should complete the New Member Application form on the enclosed Trust Member Booking Coupons and return it to the Trust for processing.

Anyone who would like further information about the facilities available to Trust Members should ring the membership office on 357-1200. The Australian Elizabethan Theatre Trust, P.O. Box 137, Kings Cross, N.S.W. 2011.

member activities

(Arranged by the Members Committee)

Drinks and Eats at the Trust Friday May 28 6 - 8 p.m.

Our recent evening at the Trust was such a great success with Members exploring the mysteries of stage lighting and dressing up in our costume hire department that we've decided to have drinks at the Trust on a more regular basis. It will give us the opportunity to show our Members in some detail just what goes on at 153 Dowling Street.

On May 28, Priscilla Shorne, who is the administrator of the Theatre of the Deaf will talk about the work of this exciting company which is definitely not a theatre for the deaf but one which is taking an increasingly important role in the Sydney theatre scene. Members of the company will also give excerpts from the programmes they take to N.S.W. schools.

Upstage Theatre Restaurant 652 George Street Tuesday June 1 from 6 p.m.

Sydney's newest and most exciting theatre restaurant 'Upstage' has just opened its doors. Owned by Ken and Lilian Horler who have been involved with Nimrod Theatre since its inception this theatre restaurant promises exceptional quality both by way of food and entertainment. Chef's include Dany Chouet (ex Glenella) and Ken Michael (Fred's and The Regent) and the cabaret entertainment features two of Australia's great talents - Geraldine Turner (most recently seen in CHICAGO) and John O'May seen here in EVITA. Called MOVING TARGET the show is witty sentimental and sexy and draws on Sondheim, Gershwin, Cole Porter, Brecht, Tom Lehrer and many more.

Geraldine
Turner



To introduce our Members to Upstage we have arranged a special party on Tuesday June 1. Tickets are \$22.95 which includes three course dinner (including wine) and the show. Aperitifs and liquors can be ordered separately if required. Price for general public is \$24.95 and doesn't include wine!

Marian Street Pre-Theatre Dinner Tuesday June 15 at 6.30 p.m.

Our dinner before WHAT THE BUTLER SAW! was so popular that we've decided to arrange another dinner before the perform-

LENNIE LOWER COMES HOME



Denis Moore as Lennie Lower

ance of THE IMPORTANCE OF BEING EARNEST. A two course dinner with wine will be provided for \$11.00. Please purchase your theatre tickets on the separate application form.

Phillip Street Pre-Theatre Dinner and Supper Thursday June 24 at 6.30 p.m.

Come and join us for dinner in the Phillip Street Theatre's new STAGE DOOR CANTEEN before the first Trust Member night of Neil Simon's new play GOD'S FAVOURITE. Cost is only \$11.50 for a three course dinner with wine. After the show we'll be inviting the cast to supper in the Broughton room. Members and their friends are warmly invited to join us. Supper tickets are \$4.00 each.

DEATH OF A SALESMAN SUPPER PARTY

Monday July 12 - Seymour Centre

Following the Trust Member performance of DEATH OF A SALESMAN starring Warren Mitchell and Mel Gibson we'll be inviting the cast to supper. We do hope that many Members and their friends will join us for our first supper party at the Seymour Centre. Tickets are \$6.00 each.

MELBOURNE CUP CRUISE

Friday October 29 to Thursday November 4

We are holding the best cabins left on the ship for the Oriana's Melbourne Cup cruise so tell your friends to book through us! Prices are Single cabin: \$995, Twin \$893, Two Berth \$880 and Four Berth \$737. These prices include day tour to Port Arthur in Hobart and day trip with all entries to Flemington for the race. Deposits of \$50 should be paid as soon as possible.

SNOWY MOUNTAINS TOUR

We were very pleased at the interest shown in our suggested Snowy Mountains tour and will be organising a trip in July. Full details will be available in June Trust news.

After a season at Melbourne's Playbox Theatre, Barry Dickins play about the legendary Sydney comic journalist of the 20's and 30's, LENNIE LOWER is now playing at the Bondi Pavilion Theatre.

Lennie Lower wrote for the Daily Telegraph and then, when Frank Packer sacked him, for Smith's Weekly. The admirers of his wit were legion but it was his drinking habits as much as his writings which helped create the legend. When Lower wasn't hitting the typewriter key he was hitting the bottle - hard. How he managed to knock out his daily column in this state remains a mystery. Besides being a chronic alcoholic he was also crippled with arthritis and a victim of throat cancer.

Barry Dickins play glows with warmth, gags, jokes and absurdities. Denis Moore who is well known to audiences in Melbourne and Adelaide plays the role of Lennie Lower with warmth and sympathy. It is a fitting tribute to the man.

LENNIE LOWER continues at the Bondi Pavilion Theatre throughout May. Trust Members receive a \$1.00 concession and can reserve tickets on 307211.

JAMES HAMMERSTEIN SELECTS HIS LAUREY

What has been one of the most nail biting periods in recent theatrical history ended when director James Hammerstein, after five months of auditions in all cities of Australia chose Queensland actress Sally Butterfield to play the part of Laurey in his \$1.5 million Australian production of OKLAHOMA!

This is the first professional staging of OKLAHOMA! since The Firm's presentation of it in 1949. It will also be 18 years since CAROUSEL, the last Rodgers & Hammerstein musical was seen on the Australian commercial stage.

The production which also stars John Deidrich as Curly has just opened in Adelaide and moves to Sydney's Theatre Royal on June 5. Although the Trust Member Night on Monday June 7 is now fully booked, there are still plenty of seats for the Trust Member Matinee on June 14th and for other performances during the first month of the season when a \$3.00 concession applies. Please note that the Trust Member concession only applies to bookings made before June 1. Your booking coupon is enclosed.



Sally Butterfield

JOHN BELL AND ROBYN NEVIN IN *MACBETH*

The team of John Bell and Robyn Nevin who were acclaimed for their performances in *CYRANO DE BERGERAC* for the Sydney Theatre Company last year, will team up again for the STC in *MACBETH*. It will be directed by Richard Wherrett and opens at the Opera House on June 2.

Shakespeare based *MACBETH* upon a distorted version of Scottish history which he found in Raphael Holinshed's "Chronicles of England, Scotland and Ireland". The only kernel of historical truth in the play is, in fact, Duncan's murder by the hand of Macbeth!

There are a limited number of seats for Trust Members in the first three rows of the Drama Theatre at preview performances on Saturday May 29, Monday May 31 and Tuesday June 1. Tickets are \$7.60 each (a \$2.00 concession on previous price). At all other performances (Monday to Thursday and Sat. Mat.) a \$1.00 concession applies.

MARIONETTE THEATRE'S MAY SEASON

The Marionette Theatre of Australia will present both an adult and a children's production at the Opera House in May. During the school holidays from May 10 to 22 the company's successful children's production of *SMILES AWAY* will return. First presented at the Opera House in the September school holidays it is an outback fairy tale for the whole family.

In the evenings the company will present a musical play for older audiences — *GENERAL MACARTHUR IN AUSTRALIA*. At its premiere season in Melbourne last year it was described in *The Sun* as "one of the most entertaining events of Melbourne Theatre this year". It is directed by Australia's international puppeteer, Richard Bradshaw and designed by National Times cartoonist and author Patrick Cook. The play was written by Roger Pulvers who portrays MacArthur as a man obsessed with the ideal of winning immortality through heroism and sacrifice in war. The presentation will also include a performance of *RICHARD BRADSHAW AND HIS SHADOW PUPPETS*. Recognized as the world's foremost shadow puppeteer, his work is both poetic and marvellously funny.

Trust Members receive a \$1.00 concession on adult tickets and can reserve their tickets on 20588. Payments for these tickets may be made, if desired, over the phone by charging to a credit card.

NO ROOM FOR DREAMERS SEQUEL

In January 1980 George Hutchinson's play *NO ROOM FOR DREAMERS* was presented in the Festival of Australian Playwrights at the Sydney Festival. It was such a success that the Ensemble mounted a production at Kirribilli and then it went to the U.K. where it was voted Best Fringe Play at the 1980 Edinburgh Festival. Now George Hutchinson has written a second play in his trilogy on Australian dreamers. Once again

Gance's • **NAPOLEON** • lives at



Nearly 54 years after its premiere at Theatre de L'Opera in Paris Abel Gance's visionary motion picture masterpiece *Napoleon*

COSTUME HIRES

Did you know that the Trust has over 50 costumes (from Roman times to the 1950) in its costume hires department at Kirribilli? The costumes are available for hire for productions and for fancy dress parties. Trust Members receive a 20% discount on hirings which means that Members can expect to pay \$16 for a normal overnight hire for a party. Opening hours are 8.30 Monday to Friday with late night Thursday till 7 p.m. and Saturday morning 9 - 12 p.m. Pop over one day and see what we have to offer — you'll be amazed!

PATRICIA KENNEDY AT MARIAN STREET

One of Australia's leading actresses Patricia Kennedy will play Lady Bracknell in Marian Street's forthcoming production of Oscar Wilde's *THE IMPORTANCE OF BEING EARNEST*. Elegant, caustic and sparkling with wit and vitality the play is a classic of the English stage. Trust Member performances are Sunday June 13 (4 p.m.), and Tuesday June 15. See Member Activities for pre theatre dinner on June 17. Your booking coupon is enclosed.



combining drama, verse and music, *THE BALLAD OF BILLY LANE* centres on the founding (and eventual foundering) of the 19th century New Australia colony in Patagonia by the passionately idealistic William Lane. Trust Member nights are Thursday June 17, Monday June 21 and Tuesday June 22.

the non professional theatre scene

(Trust Members receive a \$1.00 concession to all performances)

REGALS MOUNT MY FAIR LADY

The Regals Musical Society's May production of MY FAIR LADY promises to be one of the best company productions to date. This adaptation of George Bernard Shaw's PYGMALION by Lerner & Loewe combines a great story, imaginative lyrics and wonderful music.

The challenging role of Professor Higgins will be played by Paul Holmes with Elaine Thornborough as Eliza Doolittle. They are supported by an enthusiastic cast and chorus to provide a night's entertainment designed for the whole family. Putting the show together is Coral Hesford, director, Denis Little, choreographer and George Rixon, musical director. Performances will be at Rockdale Town Hall on May 7, 8, 12, 14, and 15 at 8 p.m. There will be a matinee on Saturday May 15 at 2 p.m. Bookings on 546 7778 or 53 5421.

ANNE OF GREEN GABLES AT NORTH ROCKS

L.M. Montgomery's unforgettable tale ANNE OF GREEN GABLES is to be the first Hills Musical Society's production in 1982. It will co-star Susan Deering, veteran of many previous Society productions and 16 year old Louise Doyle as the gingery piece of mischief, Anne Shirley.

Hills audiences will also be delighted to see old favourites Marjorie Simpson, Alan Shepherd, Lorraine Grant, Peter Burgess, Marion Palazzi and Allan Ingles along with many others in this often sad, frequently funny tale set in the early 1900's on Canada's Prince Edward Island. The production will be presented at North Rocks Community Centre on May 28, 29, 30 and June 4, 5, 6, 11 and 12. Bookings on 636 3151 or 871 1520 after 6 p.m.

Sydney Orchestra News *from inside flap*

member Graham Powning, Principal Oboe with the Orchestra. Trust Members receive a \$1.00 concession and can reserve their tickets on the enclosed booking coupon.

Chalwin Series

Graham Powning will also present the next programme in The Elizabethan Sydney Chamber Group's series of concerts at Chalwin Castle on May 9. The programme will include works for cor anglais, oboe, and strings.

The third concert in the series takes place on June 20 and Robert Johnson, the Orchestra's Principal Horn will present an all brass programme including works by Gabrielli. It is planned to use the two galleries in the theatre to obtain the antiphonal effect which was the custom during that period.

Trust Members are advised that if they subscribe now for the remaining five concerts in the Chalwin Castle series (from May 9) they need pay only \$25, a saving of \$1.00 per concert. Your booking coupon for both a subscription and single performance tickets are included.

member activities

(Arranged by the Members Committee)

Drinks and Eats at the Trust Friday May 28 6 - 8 p.m.

Our recent evening at the Trust was such a great success with Members exploring the mysteries of stage lighting and dressing up in our costume hire department that we've decided to have drinks at the Trust on a more regular basis. It will give us the opportunity to show our Members in some detail just what goes on at 153 Dowling Street.

On May 28, Priscilla Shorne, who is the administrator of the Theatre of the Deaf will talk about the work of this exciting company which is definitely not a theatre for the deaf but one which is taking an increasingly important role in the Sydney theatre scene. Members of the company will also give excerpts from the programmes they take to N.S.W. schools.

Upstage Theatre Restaurant 652 George Street Tuesday June 1 from 6 p.m.

Sydney's newest and most exciting theatre restaurant 'Upstage' has just opened its doors. Owned by Ken and Lilian Horler who have been involved with Nimrod Theatre since its inception this theatre restaurant promises exceptional quality both by way of food and entertainment. Chef's include Dany Chouet (ex Glenella) and Ken Michael (Fred's and The Regent) and the cabaret entertainment features two of Australia's great talents - Geraldine Turner (most recently seen in CHICAGO) and John O'May seen here in EVITA. Called MOVING TARGET the show is witty sentimental and sexy and draws on Sondheim, Gershwin, Cole Porter, Brecht, Tom Lehrer and many more.

Geraldine
Turner



To introduce our Members to Upstage we have arranged a special party on Tuesday June 1. Tickets are \$22.95 which includes three course dinner (including wine) and the show. Aperitifs and liquors can be ordered separately if required. Price for general public is \$24.95 and doesn't include wine!

Marian Street Pre-Theatre Dinner Tuesday June 15 at 6.30 p.m.

Our dinner before WHAT THE BUTLER SAW! was so popular that we've decided to arrange another dinner before the perform-

LENNIE LOWER COMES HOME



Denis Moore as Lennie Lower

ance of THE IMPORTANCE OF BEING EARNEST. A two course dinner with wine will be provided for \$11.00. Please purchase your theatre tickets on the separate application form.

Phillip Street Pre-Theatre Dinner and Supper Thursday June 24 at 6.30 p.m.

Come and join us for dinner in the Phillip Street Theatre's new STAGE DOOR CANTEEN before the first Trust Member night of Neil Simon's new play GOD'S FAVORITE. Cost is only \$11.50 for a three course dinner with wine. After the show we'll be inviting the cast to supper in the Broughton room. Members and their friends are warmly invited to join us. Supper tickets are \$4.00 each.

DEATH OF A SALESMAN SUPPER PARTY

Monday July 12 - Seymour Centre

Following the Trust Member performance of DEATH OF A SALESMAN starring Warren Mitchell and Mel Gibson we'll be inviting the cast to supper. We do hope that many Members and their friends will join us for our first supper party at the Seymour Centre. Tickets are \$6.00 each.

MELBOURNE CUP CRUISE

Friday October 29 to Thursday November 4

We are holding the best cabins left on the ship for the Oriana's Melbourne Cup cruise so tell your friends to book through us! Prices are Single cabin: \$995, Twin \$893, Two Berth \$880 and Four Berth \$737. These prices include day tour to Port Arthur in Hobart and day trip with all entries to Flemington for the race. Deposits of \$50 should be paid as soon as possible.

SNOWY MOUNTAINS TOUR

We were very pleased at the interest shown in our suggested Snowy Mountains tour and will be organising a trip in July. Full details will be available in June Trust news.

After a season at Melbourne's Playbox Theatre, Barry Dickins play about the legendary Sydney comic journalist of the 20's and 30's, LENNIE LOWER is now playing at the Bondi Pavilion Theatre.

Lennie Lower wrote for the Daily Telegraph and then, when Frank Packer sacked him, for Smith's Weekly. The admirers of his wit were legion but it was his drinking habits as much as his writings which helped create the legend. When Lower wasn't hitting the typewriter key he was hitting the bottle - hard. How he managed to knock out his daily column in this state remains a mystery. Besides being a chronic alcoholic he was also crippled with arthritis and a victim of throat cancer.

Barry Dickins play glows with warmth, gags, jokes and absurdities. Denis Moore who is well known to audiences in Melbourne and Adelaide plays the role of Lennie Lower with warmth and sympathy. It is a fitting tribute to the man.

LENNIE LOWER continues at the Bondi Pavilion Theatre throughout May. Trust Members receive a \$1.00 concession and can reserve tickets on 307211.

JAMES HAMMERSTEIN SELECTS HIS LAUREY

What has been one of the most nail biting periods in recent theatrical history ended when director James Hammerstein, after five months of auditions in all cities of Australia chose Queensland actress Sally Butterfield to play the part of Laurey in his \$1.5 million Australian production of OKLAHOMA!

This is the first professional staging of OKLAHOMA! since The Firm's presentation of it in 1949. It will also be 18 years since CAROUSEL, the last Rodgers & Hammerstein musical was seen on the Australian commercial stage.

The production which also stars John Deidrich as Curly has just opened in Adelaide and moves to Sydney's Theatre Royal on June 5. Although the Trust Member Night on Monday June 7 is now fully booked, there are still plenty of seats for the Trust Member Matinee on June 14th and for other performances during the first month of the season when a \$3.00 concession applies. Please note that the Trust Member concession only applies to bookings made before June 1. Your booking coupon is enclosed.



Sally Butterfield

JOHN BELL AND ROBYN NEVIN IN *MACBETH*

The team of John Bell and Robyn Nevin who were acclaimed for their performances in *CYRANO DE BERGERAC* for the Sydney Theatre Company last year, will team up again for the STC in *MACBETH*. It will be directed by Richard Wherrett and opens at the Opera House on June 2.

Shakespeare based *MACBETH* upon a distorted version of Scottish history which he found in Raphael Holinshed's "Chronicles of England, Scotland and Ireland". The only kernel of historical truth in the play is, in fact, Duncan's murder by the hand of Macbeth!

There are a limited number of seats for Trust Members in the first three rows of the Drama Theatre at preview performances on Saturday May 29, Monday May 31 and Tuesday June 1. Tickets are \$7.60 each (a \$2.00 concession on previous price). At all other performances (Monday to Thursday and Sat. Mat.) a \$1.00 concession applies.

MARIONETTE THEATRE'S MAY SEASON

The Marionette Theatre of Australia will present both an adult and a children's production at the Opera House in May. During the school holidays from May 10 to 22 the company's successful children's production of *SMILES AWAY* will return. First presented at the Opera House in the September school holidays it is an outback fairy tale for the whole family.

In the evenings the company will present a musical play for older audiences — *GENERAL MACARTHUR IN AUSTRALIA*. At its premiere season in Melbourne last year it was described in *The Sun* as "one of the most entertaining events of Melbourne Theatre this year". It is directed by Australia's international puppeteer, Richard Bradshaw and designed by National Times cartoonist and author Patrick Cook. The play was written by Roger Pulvers who portrays MacArthur as a man obsessed with the ideal of winning immortality through heroism and sacrifice in war. The presentation will also include a performance of *RICHARD BRADSHAW AND HIS SHADOW PUPPETS*. Recognized as the world's foremost shadow puppeteer, his work is both poetic and marvellously funny.

Trust Members receive a \$1.00 concession on adult tickets and can reserve their tickets on 20588. Payments for these tickets may be made, if desired, over the phone by charging to a credit card.

NO ROOM FOR DREAMERS SEQUEL

In January 1980 George Hutchinson's play *NO ROOM FOR DREAMERS* was presented in the Festival of Australian Playwrights at the Sydney Festival. It was such a success that the Ensemble mounted a production at Kirribilli and then it went to the U.K. where it was voted Best Fringe Play at the 1980 Edinburgh Festival. Now George Hutchinson has written a second play in his trilogy on Australian dreamers. Once again

Gance's *NAPOLEON* lives again



Nearly 54 years after its premiere at The Theatre de L'Opera in Paris Abel Gance's visionary motion picture masterpiece NA-

COSTUME HIRES

Did you know that the Trust has over 5000 costumes (from Roman times to the 1950's) in its costume hires department at Kings Cross? The costumes are available for hire for productions and for fancy dress parties. Trust Members receive a 20% discount on hirings which means that Members can expect to pay \$16 for a normal overnight hiring for a party. Opening hours are 8.30 - 5 Monday to Friday with late night Thursday till 7 p.m. and Saturday morning 9 - 12. Pop over one day and see what we have to offer — you'll be amazed!

PATRICIA KENNEDY AT MARIAN STREET

One of Australia's leading actresses Patricia Kennedy will play Lady Bracknell in Marian Street's forthcoming production of Oscar Wilde's *THE IMPORTANCE OF BEING EARNEST*. Elegant, caustic and sparkling with wit and vitality the play is a classic of the English stage. Trust Member performances are Sunday June 13 (4.30 p.m.), and Tuesday June 15. See Member Activities for pre theatre dinner on June 15. Your booking coupon is enclosed.



Patricia Kennedy

combining drama, verse and music, *THE BALLAD OF BILLY LANE* centres on the founding (and eventual foundering) of the 19th century New Australia colony in Paraguay by the passionately idealistic William Lane. Trust Member nights are Thurs. June 17, Mon. June 21 and Tues. June 22.

POLEON has been reconstituted by film historian Kevin Brownlow from butchered prints found around the world. Its original six hours have been trimmed to four and a new musical score has been composed by Carmine Coppola, the father of the film's distributor Francis Ford Coppola. The film was a visual revolution in its time with three screen polyvision (thirty years before cinerama), and cameras freed from the conventions of the silent cinema. But its production was untimely — just as sound films were taking over — so that its brilliance was overshadowed by that new technology.

The revival of *NAPOLEON* has created a storm overseas with sell out performances and standing ovations greeting its every presentation. The New York Times described it as "The film event of the year. It sweeps, dazzles, it takes your breath away. Napoleon is not to be missed."

Mike Walsh and Malcolm C. Cooke have arranged four screenings of the film in Sydney at the State Theatre. It will be accompanied by a 56 piece orchestra conducted by Coppola's protege, American Paul Bogaviv who recently conducted *WOMAN OF THE YEAR* starring Lauren Bacall on Broadway. Trust Members receive a \$4.00 concession at the first performance on Monday May 24 only. Your booking coupon is enclosed.

NEXT AT NIMROD

Director, Ken Horler and composer Sharon Raschke who collaborated so successfully on the Nimrod production of *KOLD KOMFORT KAFFEE*, have joined forces again to work on a new play written by Ken Horler. *PARTY WALL* is an Australian political cartoon with a number of fast and funny scenes, music and song. It is set in 1934 and concerns Egon Kisch, a Czech journalist and Gerald Griffin, a trade union official who were invited to Australia to address the Movement Against War and Fascism. The Lyons-Menzies government tried unsuccessfully to keep them out and then to gaoil them but each time Menzies put Kisch in gaol, the Courts released him!

PARTY WALL opens at Nimrod on July 7 and Trust Members are invited to attend the preview on Saturday July 3 at 8.30 pm. Please note preview tickets are not available for Sunday July 4.

MOVIE NEWS

Britain Takes Best Picture Oscar

The British movie *CHARIOTS OF FIRE* carried off four Oscars at the recent Academy Awards including **BEST PICTURE** — the first time a British film has won the award since *Hamlet* in 1948. *REDS* won the award for best director (Warren Beatty) and best actor and best actress went to Katherine Hepburn and Henry Fonda for *ON GOLDEN POND*. Best support actress went to Maureen Stapleton for *REDS* and best supporting actor to Sir John Gielgud for *ARTHUR*. *CHARIOTS OF FIRE* and *ON GOLDEN POND* are released by Hoyts in Australia and *REDS* and *ARTHUR* by Greater Union. Vouchers are available for all four films on the encl. booking coupon.

continued page 4

what's on in Canberra

(See Showguide for details of concessions)

ROBERT GARD in Peter Grimes

The second programme in Canberra Opera's 1982 season is Benjamin Britten's *PETER GRIMES*, which will star Robert Gard in the title role. To be conducted by Donald Hollier this dramatic work will also feature Neil Easton, Bryan Dowling, Fiona Macconaghie, Judith Bauer, Margaret Cleary, Phil Thomas and Michael Tatchell. The Opera will be presented at the Canberra Theatre Centre on May 26, 28 and 29.



Robert Gard

Canberra Philharmonic's CAMELOT

Based on the famous tale of Arthur and the Knights of the Round Table, *CAMELOT* by Lerner and Loewe will be presented by Canberra Philharmonic Society at the Canberra Theatre on 14, 15 and 19 to 22nd May. Bill Stephens who directed *FIDDLER ON THE ROOF* for the Society will direct with Howard Ward musical director. Well known Canberra artist Colin Slater will play *ARTHUR*.

NEXT AT THE REP

Third play in Rep's 50th anniversary season is the Georges Feydeau farce, *A FLEA IN HER EAR*. It will be directed by Alan Harvey who was manager of Canberra Repertory Society from 1960 to 1963 and 1970 to 71. The season extends from May 19 to June 12

Sydney Orchestra News

The Elizabethan Sydney Orchestra has been very busy over the past few months. On top of its usual commitments to the Australian Opera and the Australian Ballet, it has given a major concert in the Mostly Mozart series to a packed Concert Hall in the Sydney Opera House in January, accompanied the Australian Opera at the highly successful outdoor performance of *LA TRAVIATA* in the Domain in the same month and, with Australian Elizabethan Theatre Trust Director of Music, William Reid conducting, has made three recordings for the A.B.C. Their recording of Brahms 4th Symphony and Tchaikovsky's Violin Concerto, with ESO concertmaster Ladislav Jasek, will be broadcast nationally on Thursday May 20 at 3 p.m. on Radio 2.

The Elizabethan Sydney Wind Quintet, formed from members of the Elizabethan Sydney orchestra, will give a concert for The Double Reed Society at The Conservatorium of Music on Saturday May 29 at 6 p.m. The group will present an all Australian programme, including Grainger arrangements and a highlight will be the performance of Quintet No. 2 composed by group

continued outside flap

SHOWGUIDE

** indicates concession which may be applied to each of two tickets any performance unless otherwise stated).

THE ALMOST MANAGING COMPANY (30-7211)

Bondi Pavilion Theatre, Queen Elizabeth Drive (Wed to Sat) Lonely Lenny Lower by Stephen Poliakoff
Until June 8
**\$1.00

CAPITOL THEATRE (212 3455)

Campbell Street, Sydney
The Tommy Steele show
Until May 8
**\$2.00

Record Offer - Capella Corelli



Capella Corelli, now established as one of Australia's finest Chamber Music groups in the field of baroque music, was formed in November 1977. They perform on original or reconstructed instruments of the baroque period and in appropriate playing style.

Larrikin Records has just released their recording of For ye Lovers and Masters of Musique. It includes works by Dario Castello, George Handel, Nicola Matteis, Arcangelo Corelli, John Blow and Jean-Marie Leclair. The record is available at a special mail order price of \$9.25 which includes post and packaging (normal retail \$10). Your booking coupon is enclosed.

Movie News from page 3

The Man from Snowy River Opens

After its well publicised world premiere in the Victorian country town of Mansfield, THE MAN FROM SNOWY RIVER has now opened at the Hoyts Entertainment Centre. Based on the classic Banjo Paterson poem the film is visually magnificent. It stars Tom Burlinson as the mountain boy with Kirk Douglas, Jack Thompson (as the legendary Clancy), Sigrid Thornton and Lorraine Bayly. It is directed by George Miller.

Tom
Burlinson

Vouchers are now available for this film but Members should note that they are only valid on Mondays to Thursdays.

ELIZABETHAN SYDNEY CHAMBER ORCHESTRA (357 1200)

Chalwin Castle, Shellcove Road, Cremorne
Francaix, Beethoven and Reicha
May 9
** (For Trust Members and friends only)

ENSEMBLE THEATRE (909 2928)

78 McDougall Street, Milson's Point.
The Ballad of Billy Lane by George Hutchinson
**\$2.00 (June 17, 21, 22)

GENESIAN THEATRE (909 2928)

470 Kent Street, Sydney
(Friday, Saturday and Sunday)
The Cat and the Canary
by John Willard
Until May 22
The Winslow Boy by Terrence Rattigan
Commences June 7
**\$1.00

GRIFFIN THEATRE COMPANY (33 3817)

Stables Theatre, 10 Nimrod Street, Kings Cross
The Cinderella Syndrome by Craig Cronin
Until May 29
**\$1.00

MARIAN STREET THEATRE (498 3166)

Marian Street Killara
Night and Day by Tom Stoppard
Until May 15
The Importance of Being Earnest by Oscar Wilde
Commences June 4
**\$1.00
\$3.00 (June 13 & 15)

MARIONETTE THEATRE OF AUSTRALIA (20588)

Drama Theatre, Sydney Opera House,
Smiles Away by Richard Bradshaw
May 10 to 22
**\$1.00 (Adults only)
General MacArthur in Australia by Roger Pulvers and Richard Bradshaw and his Shadow Puppets
May 11 to 22
**\$1.00

NEW THEATRE (519 3403)

542 King Street, Newtown
The Alchemist by Ben Johnson
Continuing
**\$1.00

N.I.D.A. (663 3815)

Parade Theatre,
Anzac Parade, Kensington (Wed-Fri)
Camino Real by Tennessee Williams
Commences May 12
**\$1.00

NIMROD THEATRE (699 5003)

500 Elizabeth Street, Surry Hills
The Suicide by Nikolai Erdman
Until May 9
The Struggle of the Naga Tribe by Rendra
Commences May 19
Downstairs: Demolition Job by Gordon Graham
Until May 16
New Sky by Judith Anderson
Commences May 21
**\$1.00

PHILLIP STREET THEATRE (232 8570)

169 Phillip Street, Sydney
The Anniversary by Bill McIlwraith
Into June
**\$1.00

Q THEATRE (047 21 5735)

What the Butler Saw by Joe Orton
Penrith until May 1
Orange May 3 to 8
Safety in Numbers by Philip Scott and Luke Hardy
Commences Penrith May 19
**\$50c

ROCKS PLAYERS (569 0223)

Cnr. Marion and Renwick Sts. Leichhardt
Entertaining Mr. Sloane by Joe Orton
Until May 29
**\$1.00

REGENT THEATRE (264 7988)

George Street, Sydney
Barnum by Coleman, Stewart and Bramble
Continuing
**\$2.00 (Mon-Thurs)

SEYMOUR CENTRE (692 0555)

Cnr. City Road & Cleveland Sts
Candide by Bernstein & Sondheim
Until June 12
**\$1.00

STUDIO SYDNEY (771 3333)

Wayside Theatre, Hughes Street, Potts Point
People are Living There by Athol Fugard
Until May 9
Seascape by Edward Albee
Commences May 27
**\$1.00

SYDNEY THEATRE COMPANY (20588)

Drama Theatre, Sydney Opera House
A Map of the World by David Hare
Until May 8
Macbeth by William Shakespeare
Commences June 2
**\$1.00 (Mon-Thurs & Sat mat)
\$2.00

THEATRE ROYAL (231 6111)

King Street, Sydney
Amadeus by Peter Shaffer
Until May 29
**\$1.00
Oklahoma! by Rodgers and Hammerstein
Commences June 5
**\$3.00 (until July 3)
\$5.00 (June 7 & June 14 (mat) only)

CANBERRA

CANBERRA REPERTORY THEATRE (47 4222)

Theatre 3, Ellery Crescent, Acton
Romanoff and Juliet by Peter Ustinov
Until May 1
A Flea in Her Ear by Georges Feydeau
Commences May 19
**\$1.00

CANBERRA PHILHARMONIC SOCIETY (47 0860)

Canberra Theatre
Camelot by Lerner and Loewe
May 14 to 22
**\$1.00

CANBERRA OPERA 947 0249)

Canberra Theatre
Peter Grimes by Benjamin Britten
May 26, 28 and 29
**\$1.00 (A Reserve only)

NEWCASTLE

HUNTER VALLEY THEATRE COMPANY (26 2526)

Playhouse Theatre: Macbeth by William Shakespeare
Until May 8
Forget-me-Not Lane by Peter Nichols
May 14 to June 4
**\$1.00

FILMS

A Concession available ONLY by purchase of concessional voucher from the AETT in person or on the enclosed coupon and available ONLY for screenings specified below. Members may purchase as many vouchers as they wish.

N.B. Concession is NOT available by presenting membership card at cinema box office.

GREATER UNION

All theatres and all presentations
** \$1.00 (except all Saturday performances)

HOYTS ENTERTAINMENT CENTRE

On Golden Pond
Chariots of Fire
**\$1.00 (except Saturday evening and public holidays)
The Man From Snowy River
**\$1.00 (Monday to Thursday only)
B Concession available at theatre box office on presentation of card.
HOYTS (Plaza Cinema, Bondi) (389 5877)
**\$1.00 (except Saturday evening)

STATE THEATRE

Napoleon by Abel Gance
May 24 to 29
**\$4.00 (May 24 only)

MEMBER ACTIVITIES

Please send me

Drinks & Eats at the Trust

Friday May 28,

..... tickets @ \$4.00 = \$

Upstage Theatre Company

Tuesday June 1

..... tickets @ \$22.90 = \$

Marian Street Theatre Dinner

Tuesday June 15

..... tickets @ \$11.00 = \$

NAME A.E.T.T. No.

ADDRESS

POSTCODE TEL (day) (night)

I enclose cheque/p.o. (made payable to A.E.T.T. Ladies Committee)

for \$

Phillip Street Theatre Dinner & Supper

Tuesday June 15

..... dinner tickets @ \$11.50 = \$

..... supper tickets @ \$ 4.00 = \$

Death of A Salesman Supper

Monday July 12 — Seymour Centre

..... tickets @ \$6.00 = \$

Melbourne Cup Cruise Oct. 29 to Nov. 4

Please reserve me berths (single, twin,
two berth and four berth) — delete as applic.

I enclose \$50 deposit per berth = \$

NAPOLEON — STATE THEATRE

Monday May 24

N.B. Members may purchase as many tickets as they wish.

Please send me

..... tickets @ \$21.00 = \$

NAME A.E.T.T. No.

ADDRESS

POSTCODE TEL (day) (night)

I enclose my cheque/p.o. made payable to NAPOLEON and s.a.e.

for return of tickets.

FILMS please send me

HOYTS ENTERTAINMENT CENTRE

..... vouchers for The French Lieutenant's Woman @ \$4.50 = \$

..... vouchers for On Golden Pond @ \$4.50 = \$

..... vouchers for Chariots of Fire @ \$4.50 = \$

..... vouchers for The Man from Snowy River @ \$4.50 = \$

GREATER UNION THEATRE

..... vouchers @ \$5.00 = \$

NAME A.E.T.T. No.

ADDRESS

POSTCODE TEL (day) (night)

I enclose cheque/p.o. (made payable to A.E.T.T.)

for \$ together with s.a.e. for return of vouchers.

NIMROD — PARTY WALL

N.B. Members may purchase as many tickets as they wish.

Please send me

..... tickets for Sat. July 3 (8.30 p.m.) @ \$6.00 = \$

NAME A.E.T.T. No.

ADDRESS

POSTCODE TEL (day) (night)

I enclose my cheque/p.o. (made payable to Nimrod Theatre) together

with s.a.e. for return of tickets.

N.B. Bookings close Friday June 18.

MARIAN STREET THEATRE — THE IMPORTANCE OF

BEING EARNEST

N.B. Members may purchase as many tickets as they wish.

Please send me

..... tickets for Sunday June 13 (at 4.30 p.m.) @ \$7.90 = \$

..... tickets for Tuesday June 16 (evening) @ \$7.90 = \$

NAME A.E.T.T. No.

ADDRESS

POSTCODE TEL (day) (night)

I enclose my cheque/p.o. (made payable to A.E.T.T.)

for \$ together with s.a.e.

SYDNEY THEATRE COMPANY — MARGARET

N.B. Members may purchase up to ten tickets each.

Please send me

..... tickets for Saturday May 29 @ \$7.80 = \$

..... tickets for Monday May 31 @ \$7.80 = \$

..... tickets for Tuesday June 1 @ \$7.80 = \$

NAME A.E.T.T. No.

ADDRESS

POSTCODE TEL (day) (night)

I enclose my cheque/p.o. (made payable to Sydney Theatre Co.)

for \$ together with s.a.e.

ELIZABETHAN SYDNEY WIND QUINTET

CONSERVATORIUM

Saturday May 28 at 6 p.m.

N.B. Members may purchase up to two tickets at 1/10 price.

Please send me

..... tickets @ \$2.00 = \$ (1st price)

..... tickets @ \$6.00 = \$ (10 p. price)

NAME A.E.T.T. No.

ADDRESS

POSTCODE TEL (day) (night)

I enclose cheque/p.o. (made payable to the Elizabethan Society)

for \$ and s.a.e. for return of tickets

CAROL CORRELL — RECORD OFFER

Please send me

..... records @ \$2.95 = \$

(includes postage & packaging)

NAME A.E.T.T. No.

ADDRESS

POSTCODE TEL (day) (night)

I enclose cheque/p.o. (made payable to Carlin Records)

for \$

MARIAN STREET THEATRE – THE IMPORTANCE OF BEING EARNEST

N.B. Members may purchase as many tickets as they wish.

Please send me

. . . . tickets for Sunday June 13 (at 4.30 p.m.) @ \$7.90 = \$

. . . . tickets for Tuesday June 15 (evening) @ \$7.90 = \$

NAME A.E.T.T. No.

ADDRESS

POSTCODE TEL (day) (night)

I enclose my cheque/p.o. (made payable to A.E.T.T.

for \$ together with s.a.e.

SYDNEY THEATRE COMPANY – MACBETH

N.B. Members may purchase up to ten tickets each.

Please send me

. . . . tickets for Saturday May 29 @ \$7.60 = \$

. . . . tickets for Monday May 31 @ \$7.60 = \$

. . . . tickets for Tuesday June 1 @ \$7.60 = \$

NAME A.E.T.T. No.

ADDRESS

POSTCODE TEL (day) (night)

I enclose my cheque/p.o. (made payable to Sydney Theatre Co.)

for \$ together with s.a.e.

ELIZABETHAN SYDNEY WIND QUINTET – CONSERVATORIUM

Saturday May 29 at 6 p.m.

N.B. Members are limited to two tickets at T.M. price.

Please send me

. . . . tickets @ \$5.00 = \$ (T.M. price)

. . . . tickets @ \$6.00 = \$ (G.P. price)

NAME A.E.T.T. No.

ADDRESS

POSTCODE TEL (day) (night)

I enclose cheque/p.o. (made payable to the Double Reed Society)

for \$ and s.a.e. for return of tickets.

CAPELLA CORELLI – RECORD OFFER

Please send me

. . . . records @ \$ 9.25 = \$

(includes postage & packaging)

NAME A.E.T.T. No.

ADDRESS

POSTCODE TEL (day) (night)

I enclose cheque/p.o. (made payable to Larrikin Records).

for \$

TRUST MEMBER BOOKING COUPONS — SUPPLEMENT TO TRUST NEWS — MAY 1982 VOL. 6 No. 3

Please tear off coupon and mail with individual cheques and stamped addressed envelopes to Trust Member Bookings. The Australian Elizabethan Theatre Trust P.O. Box 137 Kings Cross, N.S.W. 2011. *Please print all information.* For easier reading performance and price information is given alongside booking coupon.

PLEASE READ BOTH SIDES BEFORE CUTTING

Key: T.M. = Trust Member *PLEASE NOTE: If stamped*
G.P. = General Public *addressed envelope is not enclosed*
s.a.e. = Stamped addressed *tickets will be left at the box office*
envelope *for collection.*

OKLAHOMA — THEATRE ROYAL (BOOKINGS CLOSE JUNE 1)

N.B. Members are restricted to two tickets at T.M. price except **

Please send me Delete as applicable

..... tickets @ \$16.50 = \$
..... tickets @ \$14.50 = \$
..... tickets @ \$19.50 = \$
..... tickets @ \$21.50 = \$
..... tickets @ \$17.50 = \$
..... tickets @ \$12.50 = \$
..... tickets @ \$10.50 = \$

For (day & date) (1st pref.) (2nd pref.)

NAME A.E.T.T. No.

ADDRESS

POSTCODE TEL (day) (night)

I enclose my cheque/p.o. (made payable to Theatre Royal)
for \$ together with s.a.e.

THE AUSTRALIAN OPERA — OPERA THEATRE

N.B. Members are restricted to two tickets at T.M. price.

Please send me Delete as applicable

..... tickets @ \$24.00 = \$
..... tickets @ \$27.00 = \$

For (Opera)
on (1st pref.) (2nd pref.)

..... tickets @ \$24.00 = \$
..... tickets @ \$27.00 = \$

For (Opera)
on (1st pref.) (2nd pref.)

NAME A.E.T.T. No.

ADDRESS

POSTCODE TEL (day) (night)

I enclose my cheque/p.o. (made payable to The Australian Opera)
for \$ together with s.a.e.

DEATH OF A SALESMAN — YORK THEATRE

N.B. Members are restricted to two tickets at T.M. price except **

Please send me Delete as applicable

..... tickets @ \$14.90 = \$
..... tickets @ \$15.90 = \$
..... tickets @ \$10.50 = \$
..... tickets @ \$11.50 = \$

For (day & date) (1st pref.) (2nd pref.)

NAME A.E.T.T. No.

ADDRESS

POSTCODE TEL (day) (night)

I enclose my cheque/p.o. (made payable to York Theatre)
for \$ together with s.a.e.

NEW MEMBER APPLICATION

I would like to become a member:

Mr. Mrs. Miss

Address

POSTCODE TEL (day) (night)

I enclose my cheque for \$20 made payable to A.E.T.T.

N.B. Membership valid for 12 months from date of joining.

OKLAHOMA — THEATRE ROYAL (BOOKINGS CLOSE JUNE 1)

Performances: Monday June 7 to Saturday July 3 only
Monday to Saturday at 8 p.m.
Wednesday & Saturday at 2 p.m.

Prices:	T.M.	G.P.	Pensioner/Student
Evenings			
Mon-Thurs	\$16.50	\$19.50	—
Fri & Sat	—	\$21.50	—
Matinees			
Saturday	\$16.50	\$19.50	\$12.50
Wednesday	\$14.50	\$17.50	\$10.50
June 14** only	\$14.50	\$19.50	\$12.50

**Members may purchase up to four tickets for these special performances.

THE AUSTRALIAN OPERA — OPERA THEATRE

Performances: Puccini's Trittico Mon June 14 or Tues Aug 24
Mahagonny Wed July 14 or Tues Aug 3
Manon Thu Aug 5 or Tues July 27
Magic Flute Thu Aug 26 or Thu Sept 9
Madam Butterfly Thu Aug 19 or Tues Sept 7
Falstaff Thu Sept 30 or Thu Oct 7
Patience Mon Oct 18 or Thu Oct 21
Boris Godunov Thu Sept 23 or Tues Oct 5
Salome Thu Oct 14 or Tues Oct 27

Prices:	T.M.	G.P.	Pensioners/Students
	\$24.00	\$27.00	—

DEATH OF A SALESMAN — YORK THEATRE

Performances: Friday July 9 to
Saturday July 31
Monday to Friday at 8 p.m.
Saturday at 8.30 p.m.

Matinees: Thursday at 2 p.m., Saturday at 5 p.m.

Prices:	T.M.	G.P.	Pensioner/Student
Evenings and Matinees	\$14.90	\$15.90	\$10.50
July 12** only	\$11.50		

**Members may purchase up to ten tickets at T.M. price on this special night.

CHALWIN CASTLE CONCERTS

Please send me

..... subscription tickets for 5 concerts @ \$25 = \$

..... individual tickets for concerts on

NAME A.E.T.T. No.

ADDRESS

POSTCODE TEL (day) (night)

I enclose cheque/p.o. (made payable to A.E.T.T.)

for \$ together with s.a.e. for return of tickets.

GOD'S FAVOURITE — PHILLIP ST. THEATRE

N.B. Members are restricted to two tickets at T.M. price except **

Please send me Delete as applicable

..... tickets @ \$ 8.90 = \$

..... tickets @ \$12.90 = \$

..... tickets @ \$13.90 = \$

For (day & date) (1st pref.) (2nd pref.)

NAME A.E.T.T. No.

ADDRESS

POSTCODE TEL (day) (night)

I enclose my cheque/p.o. (made payable to Phillip St. Theatre)

for \$ together with s.a.e.

THE ANNIVERSARY — PHILLIP ST. THEATRE

N.B. Members are restricted to two tickets at T.M. price

Please send me Delete as applicable

..... tickets @ \$11.90 = \$

..... tickets @ \$12.90 = \$

..... tickets @ \$ 8.90 = \$

For (day & date) (1st pref.) (2nd pref.)

NAME A.E.T.T. No.

ADDRESS

POSTCODE TEL (day) (night)

I enclose my cheque/p.o. (made payable to Phillip St. Theatre)

for \$ together with s.a.e.

BARNUM — REGENT THEATRE

N.B. Members are restricted to two tickets at T.M. price

Please send me Delete as applicable

..... tickets @ \$18.00 = \$

..... tickets @ \$20.00 = \$

..... tickets @ \$22.50 = \$

..... tickets @ \$15.00 = \$

..... tickets @ \$17.00 = \$

..... tickets @ \$10.00 = \$

For (day & date) (1st pref.) (2nd pref.)

NAME A.E.T.T. No.

ADDRESS

POSTCODE TEL (day) (night)

I enclose my cheque/p.o. (made payable to Barnum)

for \$ together with s.a.e.

ENSEMBLE THEATRE — BALLAD OF BILLY LANE

N.B. Members may purchase as many tickets as they wish.

Please send me

..... tickets for Thursday June 17 @ \$ 7.90 = \$

..... tickets for Monday June 21 @ \$ 7.90 = \$

..... tickets for Tuesday June 22 @ \$ 7.90 = \$

NAME A.E.T.T. No.

ADDRESS

POSTCODE TEL (day) (night)

I enclose my cheque/p.o. (made payable to Ensemble Theatre)

for \$ together with s.a.e.

GOD'S FAVOURITE — PHILLIP ST. THEATRE

Performances: Commence Thursday July 1

Tuesday & Thursday at 8.00 p.m.

Friday & Saturday at 8.30 p.m.

Matinees: Wednesday at 11.00 a.m.

Friday & Saturday at 5.30 p.m.

Prices: T.M. G.P. Pensioners/Students

Evenings: \$12.90 \$13.90 \$ 8.90 (Mon to

and \$ 8.90 (Thur only)

Matinees: June 24, 25 & 29** \$ 8.90

**Members may purchase up to 10 tickets for these special

performances.

THE ANNIVERSARY — PHILLIP ST. THEATRE

Performances: Throughout May

Tuesday to Saturday at 8pm

Matinees: Wednesday at 2 p.m.

Friday and Saturday at 5 p.m.

Prices: T.M. G.P. Pensioner/Student

Evenings: \$11.90 \$12.90 \$ 8.90

and Matinees

BARNUM — REGENT THEATRE

Performances: Continuing —

Monday to Saturday at 8.15

Matinees: Wednesday and Saturday at 2.15

Prices: T.M. G.P. Pensioners/Children

Evenings: Mon-Fri \$18.00** \$20.00 —

Saturday — \$22.50 —

Matinees: Wednesday \$15.00 \$17.00 \$10.00

Saturday — \$17.00 \$10.00

**concession applies only Monday-Thursday