





*The Dance Theatre of Harlem performed seasons to capacity audiences in Sydney, Melbourne, Adelaide and Brisbane.*







## NOTICE OF MEETING

Notice is hereby given that the  
Twenty-Eighth Annual General Meeting of Members of  
The Australian Elizabethan Theatre Trust will be held in Studio 3 on the Second Floor of  
153 Dowling Street, Potts Point on Monday, the Twenty-Ninth of June, 1981 at 6.00 p.m.

### BUSINESS:

1. To receive and consider the Balance Sheet as at 31st December, 1980, and the Statements of Income and Expenditure for the year then ended together with Reports of the Directors and Auditors thereon.
2. To elect Directors.
  - (a) Mr. Robin Casper Lovejoy, O.B.E., retires as a Director by rotation and being eligible offers himself for re-election.
  - (b) The Hon. Mr. Justice C. J. Legoe retires as a Director by rotation and being eligible offers himself for re-election.
  - (c) Mr. Norman Richard Seddon, A.O., C.B.E., retires as a Director by rotation and being eligible offers himself for re-election.
  - (d) Emeritus Professor Frederick Alexander, C.B.E., being over the age of 72 retires as a Director in accordance with Section 121 of the Companies Ordinance 1962 and being eligible offers himself for re-election.
  - (e) Sir Ian Potter being over the age of 72 retires as a Director in accordance with Section 121 of the Companies Ordinance 1962 and being eligible offers himself for re-election.
  - (f) Sir Charles Moses, C.B.E., being over the age of 72 retires as a Director in accordance with Section 121 of the Companies Ordinance 1962 and being eligible offers himself for re-election.
3. To elect Governors
  - (a) Mrs. Joslyn Mary Summerhayes was appointed as a Governor during the year and retires in accordance with Article 66(b)(vi) of the Articles of Association and being eligible offers herself for re-election.
  - (b) Miss Margaret Louise Toyne was appointed as a Governor during the year and retires in accordance with Article 66(b)(vi) of the Articles of Association and being eligible offers herself for re-election.
4. To transact any other business which may be brought before the meeting in conformity with the Articles of Association.

Dated this Thirteenth day of April, 1981.

By Order of the Board  
D.F. Grace  
Secretary

A member entitled to attend and vote is entitled to appoint a proxy to attend and vote instead of the member. A proxy need not be a member of the Trust.

Proxy forms must be deposited at the registered office  
of the Trust, C/- Phipson Nominees Pty. Ltd., 12th Floor, National Mutual Centre,  
Darwin Place, Canberra City, A.C.T. 2601, not later than 5.00 p.m.  
on Friday, Twenty-Sixth day of June, 1981.



## OFFICE BEARERS

**PATRON:** HER MAJESTY THE QUEEN

**PRESIDENT:** Sir James Darling, C.M.G., O.B.E.

**CHAIRMAN:** Sir Ian Potter

### DIRECTORS:

Emeritus Professor F. Alexander, C.B.E.  
Sir David Griffin, C.B.E.  
The Hon. Mr. Justice C. J. Legoe  
Mr. R. C. Lovejoy, O.B.E.  
Mr. D. A. Mortimer  
Sir Charles Moses, C.B.E.  
Mr. N. R. Seddon, A.O., C.B.E.  
Mr. L. G. Teale  
Mr. L. D. S. Waddy

### SOLICITORS:

Allens and Parkers

### AUDITORS:

Pannell Kerr Forster  
Chartered Accountants

### BANKERS:

Commonwealth Trading Bank of Australia

### REGISTERED OFFICE:

C/- Phipson Nominees Pty. Ltd.  
12th Floor, National Mutual Centre,  
Darwin Place, Canberra City, A.C.T.

### GENERAL MANAGER:

Mr. J. Joynton-Smith

### SECRETARIES:

Mr. D. F. Grace  
Mr. N. M. Macphillamy

### COUNCIL OF GOVERNORS:

#### Vice Presidents

Mrs. G. Hay (N.S.W.)  
Mr. N. F. Hopkins (S.A.)  
Dr. T. Manford (W.A.)  
Mr. A. D. Marshall (Qld.)  
Professor J. A. Passmore (A.C.T.)  
Mr. J. B. Piggott, C.B.E. (Tas.)  
Miss M. E. Roper (Vic.)

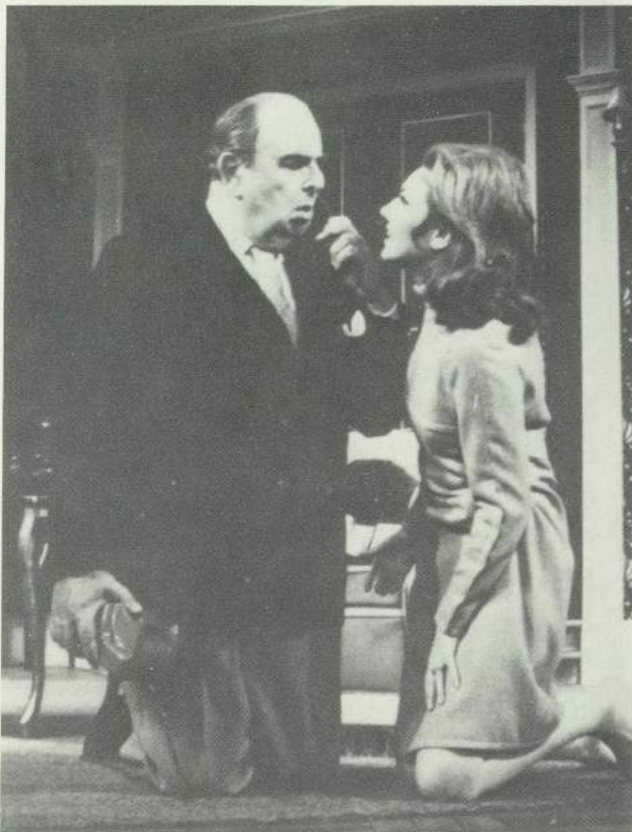
### GOVERNORS:

Mrs. B. Bennett (N.S.W.)  
Mr. D. J. Billington (N.S.W.)  
Mrs. H. Butts (Qld.)  
Sir Warwick Fairfax (N.S.W.)  
Miss M. Gillespie, M.B.E. (N.S.W.)  
Mrs. B. Goode (S.A.)  
Lady Hangar (Qld.)  
Mr. J. R. Kerrigan (N.S.W.)  
Mr. B. R. Macklin, O.B.E. (S.A.)  
Miss I. Mitchell (Vic.)  
Emeritus Professor Sir George Paton (Vic.)  
Mr. C. G. Pryor, M.B.E. (Tas.)  
Mr. B. R. Redpath (Vic.)  
Mrs. J. M. Summerhayes (W.A.)  
Miss M. L. Toyne (Vic.)  
Mrs. A. Williams (S.A.)





*Members of The Acting Company from New York in a scene from their production of "Elizabeth I", during their tour of Australia for the A.E.T.T.*



*Robert Morley and Bettina Welch in a scene from "The Old Country".*



*A scene from The Acting Company's popular production of "Broadway".*



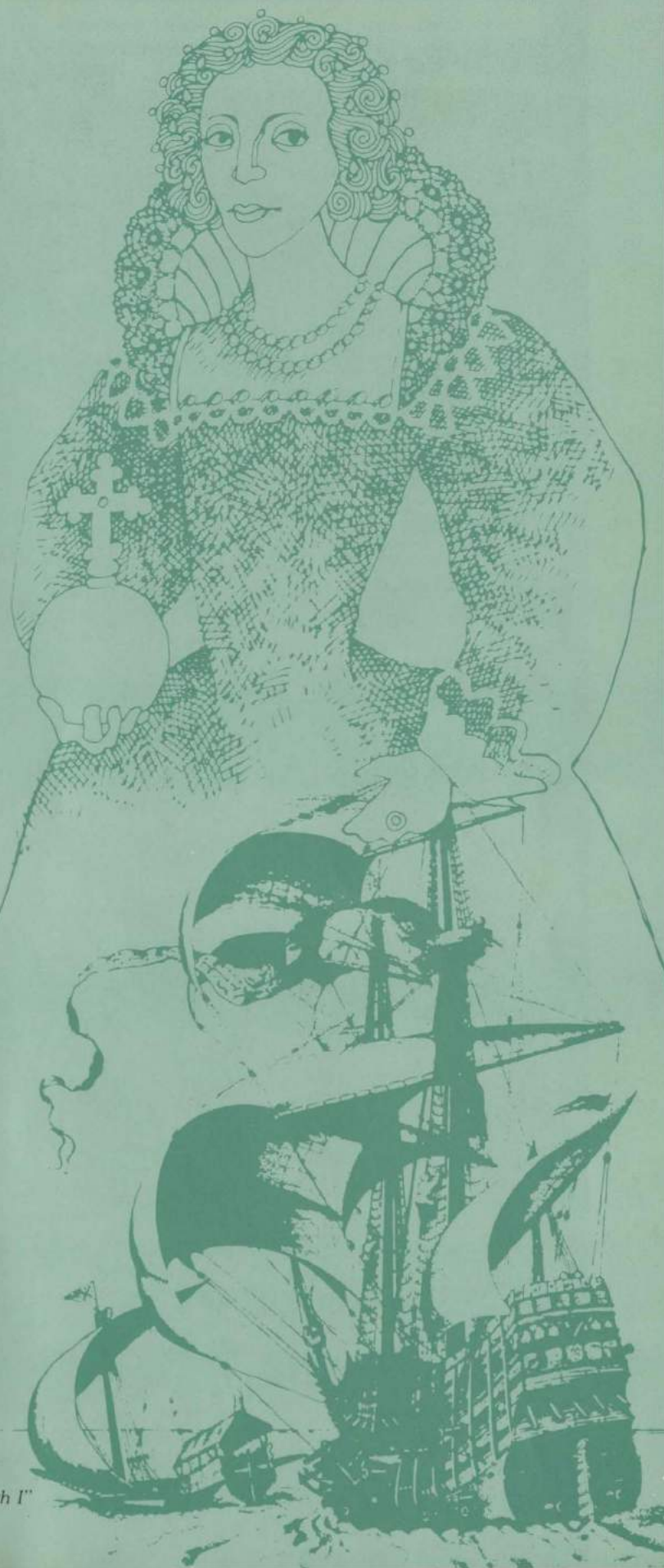
## PRESIDENT'S MESSAGE

The Trust has had another successful year. It has surmounted its worst financial difficulties and has worked itself into a position from which it can take more risk and become more enterprising, though theatre business still remains a high risk enterprise and the Trust has no vast resources of money behind it. Nevertheless and in spite of the many other competitors in the field, the Trust still plays an important part.

Membership has increased in some states and this remains an important factor. If all members would try personally to enlist a new member or two, it would make a world of difference to our confidence and to our effectiveness. I wish that they would.

J. R. Darling  
President

*Poster Design for "Elizabeth I"*





*Leslie Caron and Louis Jourdan proved extremely popular stars with Melbourne and Sydney audiences in "13 Rue de l'Amour".*







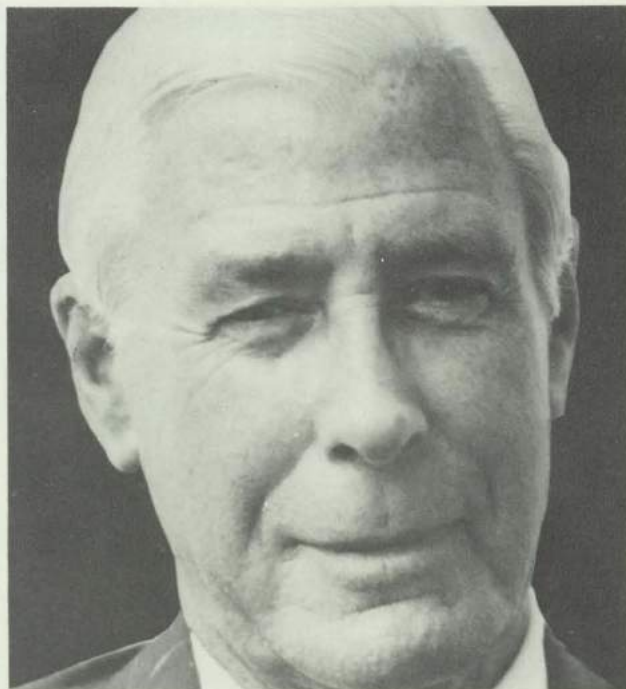
## CHAIRMAN'S ADDRESS

I am pleased, once more, to report a consolidated surplus in the finances of the Trust. For the year ended 31st December, 1980 a surplus of \$149,890 was earned, as against a surplus of \$143,931 in 1979.

In accordance with the policy previously determined, the Trust has allocated from Accumulated Funds, a substantial amount to the Entrepreneurial Development Fund which is intended to provide back-up resources for the future expansion of the Trust's activities in the entrepreneurial field. The Entrepreneurial Development Fund was increased to \$500,000 by transferring \$250,000 from General Accumulated Funds.

The five-year period from the beginning of 1976 to the end of 1980 has demonstrated the effect of the Trust's policy of consolidating its finances. As a consequence there have been marked changes in some items in the Trust's Accounts which included:-

- Increase in Net Assets from \$100,274 to \$921,607 — or 819%
- Growth in income from Box Office and Performing Fees from \$944,415 to \$3,294,530 — or 249%
- A rise in Consolidated Income from \$5,520,648 to \$8,770,904 — or 59%
- A parallel growth in Consolidated Expenditure from \$5,459,438 to \$8,621,014 — or 58%
- Grants to individuals and performing arts organisations over the period increased from \$444,644 to \$778,978 — or 75%



- An increase in the number of organisations supported by the Trust through grants increased from 60 to over 200 — an overall increase of 233%

Reflecting the increase in our activities the Trust received subsidy income from the Federal and State Governments which increased from \$2,784,750 to \$3,251,550 — or 17% — over the five-year period referred to. These subsidies are essential to the continuance of the Trust's activities.

As these figures will indicate, there has been a substantial widening of the activities of the Trust which has occurred despite the fact that the affairs of the Marionette Theatre of Australia are now excluded from the Trust's Accounts. The growth has occurred mainly because of the growing financial needs of the Trust's two orchestras. There has also been substantial growth in the Entrepreneurial Division which, over the last five years, has spread its activities over a very wide range of the performing arts. In part the increase in support is due to the fact that the Trust has been involved in the touring of Australian performers in the areas of music and of drama. The Trust regards this as an important aspect of its development. The financial needs of the Trust's entrepreneurial activities must increase during the year 1981. Substantial financial provision has been made with this in mind.

A somewhat similar picture is reflected in the Trust's Orchestral Reserve which is set-up to ensure the availability of funds to meet unpredictable problems that may be expected to occur from time to time in





*John Inman, Johnny Lockwood and Jenni Anderson in scenes from "Pyjama Tops" which played seasons in Newcastle, Sydney, Melbourne and Canberra.*

the operation of our orchestras. It is already apparent that for 1981 the orchestras will be under some financial strain to meet the requirements of the performing companies. This matter, however, is receiving the closest attention of the Trust's Board and it is hoped that the strain on resources will not prove to be as great as now seems apparent.

Continuing discussions are occurring between the performing companies — The Australian Opera and The Australian Ballet — with a view mainly to ensuring the availability of suitable orchestral support to the performances of those companies.

As the orchestras do not generate box office income or participate in the box office income of the performing companies, it is essential that the cost of maintaining and administering the orchestras, including touring costs, should be fully subsidised.

In the past year or so there has been a growing demand for the services of the Trust's orchestras, caused largely by the development of new performing companies, both on a Federal and State

basis. There have been ongoing discussions between the performing companies and the Trust on the use of the orchestras, the most significant outcome of which has been the decision of the Federal Ministry of the Arts that the Federal Government will continue to support the retention of the orchestras by The Australian Elizabethan Theatre Trust, rather than placing them in the control of any of the performing companies. This decision is important in the future planning of the Trust's orchestral activities.

Once again the year 1980 saw a substantial growth in the interest of private individuals to subscribe funds to the arts including the performing arts through the medium of the Trust. This has meant a wider use of the Trust's status as a medium for the receipt of financial support from private individuals, such donations being tax deductible. It will continue to be the policy of the Trust to develop this function and we expect the areas that we will serve will expand substantially in 1981 as they did in 1980, when amounts of this type handled by the Trust exceeded \$750,000.





The Duke Ellington Orchestra led by Mercer Ellington toured to Sydney, Canberra, Melbourne, Adelaide, Darwin, Brisbane and Newcastle under the administration of the A.E.T.T.

## OUTLOOK FOR THE PERFORMING ARTS

The Board and Governors of the Trust are aware of the important changes in the area of the performing arts in Australia. There are signs of growth in almost every phase, whether it be theatre, opera or ballet.

This growth is of special significance to the Trust as such a large proportion of its activities is devoted to providing services to other performing companies usually on a non-commercial basis. As a consequence, the call on the Trust's services tends to increase at a rate somewhat greater than do the aggregate needs of performing companies as a whole. The Trust will continue to pursue its functions to the limits of its resources. In the current situation, however, there is likely to be some stress in making ends meet and the need for co-operation and understanding throughout the performing arts generally is clear. The Trust will do its utmost to reconcile difficulties as they arise and assist where possible but its success depends on similar attitudes throughout theatre generally.

## ACKNOWLEDGEMENTS

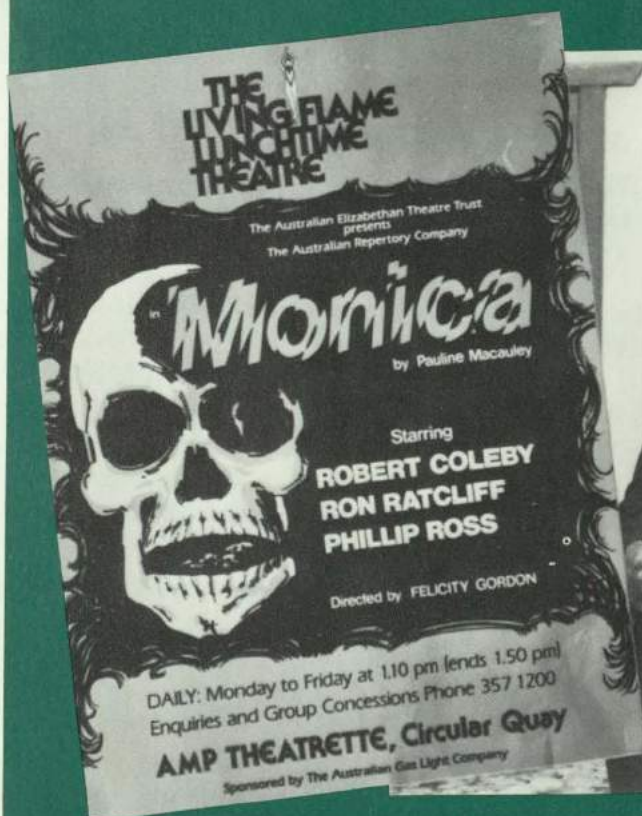
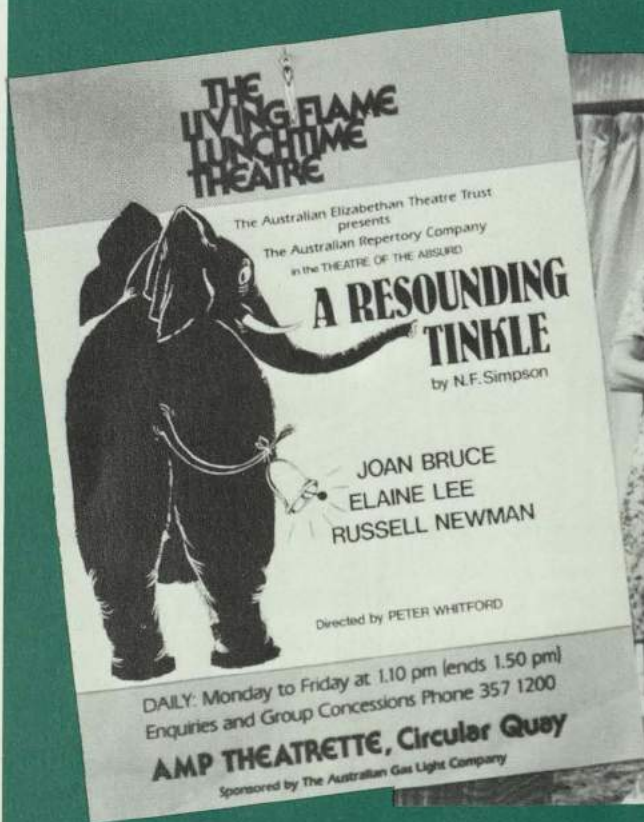
Your Board of Directors would like to acknowledge with appreciation the continuing support of the:-

- Australian Government (through the Australia Council)
- Brisbane City Council
- State Governments of:-
  - Victoria (through the Ministry for the Arts)
  - New South Wales (through the Division of Cultural Activities)
  - Queensland (through the Department of Culture National Parks and Recreation)
  - Western Australia (through the Treasury)

During 1980 the following subsidies were received from the Australia Council:-

	1980	1979
	\$	\$
Orchestral Purposes	2,300,000	2,131,000
Administration and Entrepreneurial Activities	250,000	250,000
	<u>\$2,550,000</u>	<u>\$2,381,000</u>







## ENTREPRENEURIAL DIVISION

1980 was another extremely busy year for this division and again highlighted the vital role it continues to play by being involved in a wide range of activities and the presentation of local and overseas attractions.

Some of these activities were arranged and presented in association with other Federal and State subsidised organisations whilst others were negotiated and presented with commercial managements.

ACTIVITY	CITY AND COUNTRY VENUES	PRESENTED IN ASSOCIATION OR BY ARRANGEMENT WITH	COMMENT
NO NAMES, NO PACK DRILL	Sydney	MLC Theatre Royal	Presentation of the Sydney Theatre Company's production at the Theatre Royal.
SONGS MY MOTHER DIDN'T TEACH ME	Sydney	An A.E.T.T. production	Presentation of an Australian musical.
THE LIVING FLAME LUNCHTIME THEATRE PRODUCTIONS OF:- MONICA A RESOUNDING TINKLE HANK'S NIGHT BLIND DATE	Sydney	Australian Repertory Company	Presentation during lunchtime at the AMP Theatre.
BEDROOM FARCE	Sydney	An A.E.T.T. production	Presentation of play at Revesby Workers' Club.
THE OLD COUNTRY	Melbourne Brisbane Sydney	Wilton Morley, O'Neill Organisation Pty. Ltd. and Phillip Emanuel Productions	Financial joint venture and administration involvement.
SYDNEY DANCE COMPANY	Cairns Townsville Rockhampton	Cairns City Council Townsville City Council Council of City of Rockhampton	Joint venture with respective councils.
PYJAMA TOPS	Newcastle Sydney Melbourne Canberra	Paul Elliott and Chris. Moreno	Management and administration of tour.
CROWN MATRIMONIAL	Perth	An A.E.T.T. production in association with Jasodu Pty. Ltd. and Interstar	Investment in re-production and administration of tour.
13 RUE DE L'AMOUR	Melbourne Sydney	An A.E.T.T. production in association with J.C. Williamson Productions Ltd.	Financial involvement in production and administration of tour.



Overseas Artists and Companies presented in association with other managements or administered by the Trust.

ACTIVITY	COUNTRY	VENUES AND ASSOCIATIONS
LA CLACA	Spain	Melbourne tour in association with Adelaide Festival of Arts
THEATRE DES JEUNES ANNEES	France	Sydney tour in association with Adelaide Festival of Arts.
DUKE ELLINGTON ORCHESTRA	United States of America	Administration of tour for Northern Star Investment Ltd. to Sydney, Canberra, Melbourne, Adelaide, Darwin, Brisbane and Newcastle, whilst the Trust was financially involved in the tour to Townsville.
DANCE THEATRE OF HARLEM	United States of America	Sydney, Melbourne, Adelaide and Brisbane tours presented with Michael Edgley International Pty. Ltd., J.C. Williamson Productions Ltd. and Sir Robert Helpmann.
THE ACTING COMPANY OF NEW YORK	United States of America	Sydney and Brisbane tours presented by A.E.T.T., Perth tour in association with Festival of Perth, Adelaide tour in association with Adelaide Festival of Arts, Townsville tour in association with Townsville City Council.

The Trust organised a tour to New Zealand of the production "Statements" with an all-Australian cast and initiated the tour to the United Kingdom of the Australian play "No Room for Dreamers" also with an all-Australian cast.

In addition, the Trust invested funds in the productions "Carlos Montoya", "Monte Carlo Circus" and "The Kingfisher".

As an indication of the work of this division, figures compiled for the four years ending 31st December, 1980 reveal that in the area of English-language plays alone, the Trust was financially and administratively associated with 22 productions involving 126 Australian artists and 11 overseas artists for a total of 1,514 performances. Seventeen Australian and five overseas directors were engaged in these productions.

Eighteen other activities, ranging from Jazz, to Puppetry to the Japanese Kabuki Theatre, were also part of the divisional activity with performances spread from Darwin in the north, through Cairns and around to Perth.

#### BOX OFFICE AND OTHER INCOME

Box office income and management fees received in 1980 in respect to productions administered by the Trust, or in which it was involved, exceeded \$3,250,000 as compared with \$2,200,000 in 1979. It is significant that over 300,000 people attended these activities.

The total income received and administered during the year, including the income reflected in the Statement of Income and Expenditure and the deposits, grants and theatre ticket sales administered on behalf of other organisations exceeded \$12,000,000. This is a measure of the importance of the Trust in the performing arts.

#### NEW SOUTH WALES THEATRE OF THE DEAF

1980 was the second year of this organisation's activities with the main concentration on Theatre in Education performances in schools in the Sydney metropolitan area.

General subsidies to support the organisation's activities were received from the Australia Council and the New South Wales Division of Cultural Activities, whilst the Literature Board of the Australia Council awarded a special grant towards the salary of a Writer-in-Residence. The Writer-in-Residence, namely Mr. Ingle Knight, wrote two new plays during the year. These were "The Shshsh Journey" for Primary Schools and "The Unheard World of Jasper Lawson" for High Schools. Both productions were presented with the approval of the New South Wales Department of Education.

In addition to its full-time professional company, the part-time company set up earlier is still very active. In June both companies combined and, augmented with two opera singers and four professional musicians, presented a two weeks' season at the Cell



Block Theatre of "The Threepenny Opera" by Bertholt Brecht.

In September, the Assistant Artistic Director, Mrs. Nola Colefax, directed the part-time company in a production of "Hamlet". To our knowledge this is the first time a deaf artist has directed a Shakespearean production in Australia, using an all-deaf cast.

The Visual Communication activities of the organisation has been extended to include a series of workshops in the Long Bay Prison establishment and the Mulawa Women's Centre at Silverwater, several television appearances and the Education Department's in-service courses.

## MEMBERSHIP

Membership numbers on a national basis have continued to increase and as at 31st December, 1980 totalled 5,860 as compared with 5,305 at the same time last year.

The increase in membership has continued during the first three months of 1981 and at the 31st March, 1981 exceeded 6,000.

It is apparent that people are joining the Trust in order to take advantage of the theatre ticket concessions offered and to attend functions arranged by the members' committees in their respective States. In turn, members, by their very attendance, not only help the arts financially, but also generate public interest by directly and indirectly promoting the arts.

## HIRES

This division does not receive subsidy assistance from the funding bodies and as such is limited in financial assistance it can give to amateur groups.

During 1980 over \$20,000 was spent in upgrading hire stocks of theatrical lighting, theatre curtains, props and costumes.

Hires turnover increased to \$193,000 in 1980 as compared to \$184,000 in 1979.

The importance of the division to the general public and the performing arts is demonstrated by the number of people, professional and amateur performing groups, schools and film companies which use the service.

## PRINCESS THEATRE

The continued financial support by the Victorian Government to enable the Trust to operate the Princess Theatre during 1980 is gratefully appreciated. The Trust has continued to operate the theatre in 1981 and negotiations are proceeding to obtain a further lease until the end of 1982.

Subsidised performing arts organisations who sub-leased the theatre during 1980 included the Victoria State Opera, The Australian Ballet, The Australian Ballet School, The Australian Opera, Victorian Arts Council, Sydney Dance Company and various Melbourne Ballet Schools. Sub-leases by commercial organisations included Clifford Hocking and Associates, Paul Dainty Corporation Pty. Ltd., International Artists Pty. Ltd. and Radio 3XY Melbourne.

Although the theatre was utilised for a period of 32 weeks during 1980, the spread of booking dates by subsidised companies to some degree restricted the theatre's viability for commercial activities.

## ADMINISTRATION

The duties and responsibilities of the Trust not only cover the various activities as previously outlined in this report, but also extend to administering:-

- A number of grants from the Australia Council for other organisations and individuals including the Australia Council's limited life grants. (These grants are detailed in Note 7 to the Accounts.)
- A Superannuation Plan for nine subsidised performing arts organisations.
- A Provident Fund covering 354 performing artists.
- Theatre tickets and concessions for members.
- Subscription and theatre tickets for other organisations.
- Donations for over 200 organisations located throughout Australia. In order for organisations to be included on the Trust's schedule to which it gives grants, the document submitted in support of each application has to be examined and approval given.

In addition, the Trust's premises in Sydney not only provide accommodation for its own staff, but also provide, free of charge, office space and conference room facilities for a number of small performing arts organisations.

As reported last year, the Sydney Subscription Office is leased to The Australian Ballet Foundation.

## AUXILIARY

Once again your Board would like to express its appreciation to the members' committees in each State.

The members of these committees, especially The Elizabethan Trust Sydney Committee, devote a great deal of time to advancing interest in the Trust by arranging functions for Trust members. During 1980 these included celebrity luncheons, supper parties, tours to country centres, a fashion parade,





Colin Allen and Rosemary Lenzo, members of The New South Wales Theatre of the Deaf in a scene from "The Unheard World of Jasper Lawson".

an art exhibition, and a Race Day at Royal Randwick. As indicated last year, members from New South Wales, Queensland and Victoria were entertained by members of the Adelaide Committee during the 1980 Adelaide Festival of the Arts. A weekend excursion to Melbourne was arranged for members from New South Wales and Queensland to attend a performance of "Evita".

These diverse types of functions, when coupled with the various concessions arranged for members, have been the contributing factors, not only in retaining existing members, but in obtaining new members.

## GOVERNORS

During 1980 the Governors of every State have assisted their respective members' committees and have been active in encouraging new memberships.

Your Board would like to express its appreciation for the valuable time, assistance, ideas and advice given to it by the Council of Governors through its President, Sir James Darling.

Since the last Annual General Meeting of Members the following people have been appointed to the Council of Governors:-

- Mrs. Joslyn Mary Summerhayes (Western Australia)
- Miss Margaret Louise Toyne (Victoria).

## BOARD OF DIRECTORS

It is with regret that I report the resignation, due to ill-health, of Sir Reginald Groom from the Board of Directors. Sir Reginald was originally appointed to the Board of Directors in 1968 and on the restructuring of that Board in June, 1975 was appointed the Queensland Vice-President on the Council of Governors. He was re-appointed to the Board of Directors in February, 1978.

The Board would like to express its appreciation to Sir Reginald Groom for his valued advice and in giving a balanced and discerning view on matters raised during discussions and meetings.

## STAFF

The Board wishes to acknowledge the skill, dedication and enthusiasm of the Trust's personnel in the achievement of a very satisfactory financial result for the 1980 year. The Board is aware of the strenuous artistic and financial challenge placed on the management of the Trust and is confident that the various levels of management and the staff will continue to enhance the Trust's reputation and status throughout the arts community.



## DIRECTORS' REPORT

In accordance with the requirements of the Companies Ordinance 1962 your Directors report that:

- (a) The names of the Directors in office at the date of this report are set out on page 3 of this Annual Report.
- (b) The principal activities of the company during the financial year were the administration of the Elizabethan Sydney and Melbourne Orchestras, the presentation, promotion and assistance of drama, music, dance and puppetry throughout Australia, the lease of theatres and the making and hiring of costumes and other theatrical equipment.
- (c) This year's activities resulted in an operating surplus of \$ 149,890. This surplus has been included under Total Funds which at 31st December, 1980 stood at \$ 921,607.
- (d) The amount and particulars of transfer to and from reserves or provisions during the financial year are as disclosed in Notes 2, 5 and 6 to the accounts.
- (e) The company is limited by guarantee and accordingly does not issue shares. No debentures were issued during the financial year.
- (f) As the company is limited by guarantee its Memorandum of Association prohibits the distribution of income and property by way of dividend or bonus and as such no dividend or bonus has been paid or declared since the end of the previous financial year.
- (g) Before the statement of income and expenditure and balance sheet were prepared, the Directors took reasonable steps to ascertain what action had been taken in relation to the writing off of bad debts and the making of provisions for doubtful debts.
- (h) The Directors at the date of this report are not aware of any circumstances which would render the amount written off for bad debts and the amount of the provision for doubtful debts inadequate to any substantial extent.
- (i) Before the statement of income and expenditure and balance sheet were prepared the Directors took reasonable steps to ascertain whether any current assets were unlikely to realise in the ordinary course of business their values as shown in the accounting records of the company.
- (j) The Directors at the date of this report are not aware of any circumstances which would render the values attributed to current assets in the accounts misleading.
- (k) At the date of this report there does not exist:
  - (i) Any charge on the assets of the company which has arisen since the end of the financial year and secures the liability of any other person.
  - (ii) Any contingent liability which has arisen since the end of the financial year.
- (l) No contingent or other liability has become enforceable or is likely to become enforceable within the period of twelve months after the end of the financial year which, in the opinion of the Directors, will or may substantially affect the ability of the company to meet its obligations as and when they fall due.
- (m) At the date of this report the Directors are not aware of any circumstances not otherwise dealt with in the report or in the accounts and notes thereto which would render any amount stated in the accounts misleading.
- (n) The result of the company's operations during the financial year was not, in the opinion of the Directors, substantially affected by any item, transaction or event of a material and unusual nature apart from those referred to in Note 10 to the accounts.
- (o) Apart from the items referred to in this report and the notes to the accounts there has not arisen in the interval between the end of the financial year and the date of this report any item, transaction or event of a material and unusual nature likely, in the opinion of the Directors, to affect substantially the results of the company's operations for the next succeeding financial year.
- (p) Since the end of the previous financial year no Director has received or become entitled to receive a benefit by reason of a contract made by the company or by a related corporation, with the Director or with any company in which he has substantial financial interest.

Signed on behalf of the Board of Directors in accordance with a resolution of the Directors.

Sydney,  
13th April, 1981

David A. Mortimer, Director

David Griffin, Director



THE AUSTRALIAN ELIZABETHAN THEATRE TRUST

# BALANCE SHEET

AS AT 31st DECEMBER, 1980

	NOTES	1980		1979	
		\$	\$	\$	\$
<b>FUNDS</b>					
Accumulated					
General		<b>149,874</b>		234,895	
Orchestral	1	<b>22,693</b>	<b>172,567</b>	<u>37,782</u>	272,677
Entrepreneurial Development			<b>500,000</b>		250,000
Orchestral Reserve			<b>249,040</b>		249,040
<b>TOTAL FUNDS</b>	2		<b><u>\$921,607</u></b>		<u>\$771,717</u>
Represented by:					
<b>FIXED ASSETS</b>	3		<b>506,695</b>		469,396
<b>INVESTMENTS</b>	4		<b>90,626</b>		89,506
<b>CURRENT ASSETS</b>					
Inventories	1	<b>17,001</b>		21,771	
Amounts Receivable	5	<b>183,775</b>		135,306	
Cash at Bank		<b>794,050</b>		1,066,626	
Advance Production Costs	1	<b>64,253</b>		153,451	
Prepayments		<b>91,730</b>		81,510	
Subsidies Receivable		—	<b>1,150,809</b>	<u>284,000</u>	1,742,664
<b>TOTAL ASSETS</b>			<b><u>1,748,130</u></b>		<u>2,301,566</u>
From which has been deducted:					
<b>CURRENT LIABILITIES</b>					
Amounts Payable and Accrued Expenses			<b>269,652</b>		351,348
Provisions for Specific Purposes	6		<b>282,966</b>		268,952
Funds for Special Purposes	7		<b>18,803</b>		110,379
Subsidies Received in Advance			<b>102,550</b>		650,000
Membership Fees Received in Advance			<b>78,700</b>		69,823
Donations Received in Advance	1		<b>73,852</b>		<u>79,347</u>
<b>TOTAL LIABILITIES</b>			<b><u>826,523</u></b>		<u>1,529,849</u>
<b>NET ASSETS</b>			<b><u>\$921,607</u></b>		<u>\$771,717</u>
<b>CAPITAL EXPENDITURE</b>	8				

The above Balance Sheet is to be read in conjunction with the accompanying notes.



THE AUSTRALIAN ELIZABETHAN THEATRE TRUST

# STATEMENT OF INCOME AND EXPENDITURE

FOR THE YEAR ENDED 31st DECEMBER, 1980

	NOTES	DIRECT ACTIVITIES*		CONSOLIDATED ACTIVITIES	
		1980 \$	1979 \$	1980 \$	1979 \$
<b>INCOME</b>					
Subsidies					
Australia Council—					
Annual		250,000	250,000	2,550,000	2,381,000
State Governments—					
Annual		297,050	292,500	694,050	679,500
Other Organisations		7,500	7,500	7,500	7,500
Augmentation Fees—					
Orchestras		—	—	196,741	363,031
Box Office, Management, Performing					
Fees and Programme Revenue		3,294,530	2,213,160	3,294,530	2,213,160
Dividends Received		10,623	9,725	10,623	9,725
Donations		780,121	640,269	780,121	640,269
Interest Received		143,667	88,654	150,492	88,654
Membership Fees		79,216	72,930	79,216	72,930
Trading Activities, Theatrical Hires,					
Theatre Rents, Booking Fees and					
Concessions including Theatre and					
other Expenses Recovered		1,035,514	1,092,362	987,514	1,044,362
Sundry Income		13,198	7,366	13,198	7,553
Surplus from Sale of Investments		6,919	—	6,919	—
		<u>5,918,338</u>	<u>4,674,466</u>	<u>8,770,904</u>	<u>7,507,684</u>
<b>EXPENDITURE</b>					
Advertising and Promotion		689,757	548,291	689,757	548,291
Audit Fees—Audit of the Accounts—					
(No other benefits were received by					
the Auditors)		19,051	18,501	25,351	25,201
Depreciation & Amortisation		17,428	10,634	35,361	20,908
Fares, Freight and Travelling		243,790	226,105	385,949	350,485
Production and Theatre Costs		1,387,506	1,011,725	1,453,205	1,059,067
Rent, Rates and Taxes		275,342	266,601	275,342	266,601
Salaries, Wages, Fees, Allowances,					
Royalties including Superannuation,					
Long Service Leave and Statutory					
Oncosts		2,173,163	1,667,005	4,788,315	4,207,876
Sundry Administration Expenses		168,344	179,209	188,756	195,078
Grants	9	778,978	640,246	778,978	690,246
		<u>5,753,359</u>	<u>4,568,317</u>	<u>8,621,014</u>	<u>7,363,753</u>
<b>SURPLUS FOR THE YEAR</b>					
<b>TRANSFERRED TO</b>					
<b>ACCUMULATED FUNDS</b>	2	<u>\$164,979</u>	<u>\$106,149</u>	<u>\$149,890</u>	<u>\$143,931</u>

\*Direct activities excludes the Orchestral Division.

The above Income and Expenditure Statement is to be read in conjunction with the accompanying Notes.



## NOTES TO AND FORMING PART OF THE ACCOUNTS FOR THE YEAR ENDED 31st DECEMBER, 1980.

### NOTE 1 STATEMENT ON ACCOUNTING METHODS

(a) **Accounting**

The accounts for the Company have been prepared under the Historical Cost Convention modified by revaluations of Freehold Land, Buildings and Investments.

Divisional Statements of Income and Expenditure have been prepared in respect of the Direct Activities of the Company and The Elizabethan Trust Orchestras. These have been amalgamated in the Consolidated Statement of Income and Expenditure after the elimination of intercompany income and charges.

The Australia Council, as one of its conditions of subsidy for The Elizabethan Trust Orchestras, requires that commencing the 1st January, 1979, the balance of any surplus or deficit arising from the annual activities of the orchestral division be disclosed in the Balance Sheet as a separate definable item under Accumulated Funds.

(b) **Land and Buildings**

Freehold land together with the building thereon situated at 153-165 Dowling Street, Potts Point was valued as at 31st December, 1976 by an independent valuer at \$325,000. As at the 1st January, 1977 The Valuer General assessed the unimproved value of the land at \$135,000. Your Directors have valued the building at \$190,000 and as from the 1st January, 1980 have decided that it should be depreciated at the rate of two percentum per annum.

(c) **Revaluation of Investments**

Investments in Corporations quoted on Prescribed Stock Exchange have not been revalued since the 31st December, 1976 as market values are subject to fluctuations and any surplus or deficit is only realised on sale. If market value was adopted as at 31st December, 1980 Accumulated Funds would increase by \$157,357.

(d) **Inventories**

Inventories have been valued at the lower of cost and net realisable value with cost being the main basis. Cost has been determined by the first in first out method.

(e) **Funds for Special Purposes**

The Company has entered into a number of agreements with the Australia Council to administer certain grants either on its behalf or at its direction. A condition in each agreement is that the amount of the grant and its expenditure is to appear in the annual financial accounts of the Company. In addition, certain deposits, grants and theatre ticket sales are administered on behalf of other organisations.

The amounts which are reflected in Note 7 to the accounts have not been brought into account in determining the net result of the company.

(f) **Subsidies**

**Subsidies are received from: —**

- (i) The Australia Council and the State Governments of Victoria and Western Australia which cover a period that corresponds with the company's financial year and
- (ii) other State Governments and City Councils which cover a period that does not correspond with the company's financial year.

Income from subsidies is brought into account on a time basis over the period of the subsidy notwithstanding that the level of activity being funded may vary from one period to the next.

(g) **Donations Received**

Donations received for the support of activities carried out in the financial period are included as income in the Statement of Income and Expenditure whereas donations received in support of future activities are deferred until such time as expended.

(h) **Productions in Progress**

Where the company has theatrical productions in progress the running costs for the term of the production are accumulated and reduced by box office income until completion at which time the surplus or deficiency is determined and the company's share brought to account.



# NOTES TO AND FORMING PART OF THE ACCOUNTS CONTINUED

NOTE 2 FUNDS	1980			1979		
	\$	\$	\$	\$	\$	\$
(a) <b>Accumulated</b>						
Balance as at 1st January			272,677			477,786
<b>Add</b> Consolidated						
Surplus for the year—						
Direct Activities		164,979			106,149	
Orchestral Division						
(Deficit)		(15,089)			37,782	
			149,890			143,931
			422,567			621,717
<b>Less</b> Transfer to:—						
(1) Entrepreneurial						
Development Fund		250,000			100,000	
(2) Orchestral Reserve		—			249,040	
			250,000			349,040
Balance as at						
31st December			172,567			272,677
Represented by:—						
(i) General						
Accumulated Funds as						
at 1st January (Note 1)	234,895			477,786		
<b>Add</b> Surplus for the year	164,979			106,149		
		399,874			583,935	
<b>Less</b> Transfer to						
(1) Entrepreneurial						
Development Fund	250,000			100,000		
(2) Orchestral Reserve	—			249,040		
		250,000			349,040	
Funds as at 31st December		149,874			234,895	
(ii) Orchestral						
Accumulated Funds						
as at 1st January						
(Note 1)	37,782			—		
<b>Add</b> (Less) Surplus						
(Deficit) for the year	(15,089)			37,782		
Funds as at 31st December		22,693			37,782	
		\$172,567			\$272,677	
(b) <b>Entrepreneurial</b>						
<b>Development Fund</b>						
Fund as at 1st January		250,000			150,000	
<b>Add</b> Amount transferred						
from Accumulated						
Funds		250,000			100,000	
Funds as at 31st December			500,000			250,000
(c) <b>Orchestral Reserve</b>						
Reserve as at 1st January		249,040			—	
Amount transferred						
from Accumulated						
Funds		—			249,040	
Reserve as at 31st December			249,040			249,040
<b>TOTAL FUNDS</b>			\$921,607			\$771,717



# NOTES TO AND FORMING PART OF THE ACCOUNTS CONTINUED

	1980	1979
	\$	\$
<b>NOTE 3 FIXED ASSETS</b>		
(a) Freehold Land and Building (153-165 Dowling Street, Potts Point) —At Independent Valuation 31st December, 1976	325,000	325,000
<b>Less</b> Accumulated Depreciation (Note 1)	3,800	—
	<u>321,200</u>	<u>325,000</u>
(b) Plant and Equipment		
(i) At Cost	207,495	134,974
<b>Less</b> Accumulated Depreciation	38,672	17,101
	<u>168,823</u>	<u>117,873</u>
(ii) At Directors' Valuation —31st December, 1976	42,448	48,927
<b>Less</b> Accumulated Depreciation	25,776	22,404
	<u>16,672</u>	<u>26,523</u>
	<u>\$506,695</u>	<u>\$469,396</u>
<b>NOTE 4 INVESTMENTS</b>		
Corporations quoted on Prescribed Stock Exchange —At Directors' Valuation 31st December, 1976 (Market Value, \$225,640, 1979 \$152,463)	80,221	82,476
—At Cost (Market Value \$22,343, 1979 \$14,204)	10,405	7,030
	<u>\$90,626</u>	<u>\$89,506</u>
<b>NOTE 5 AMOUNTS RECEIVABLE</b>		
Amounts Receivable	186,444	140,306
<b>Less</b> Provision for Doubtful Debts	2,669	5,000
	<u>\$183,775</u>	<u>\$135,306</u>
Movement in Provision for Doubtful Debts		
Balance brought forward	5,000	10,000
<b>Less</b> Bad Debts written off against Provision	2,331	3,119
Excess Provision written back	—	1,881
Balance at end of year	<u>\$2,669</u>	<u>\$5,000</u>



# NOTES TO AND FORMING PART OF THE ACCOUNTS CONTINUED

NOTE 6 PROVISIONS		1980	1979
		\$	\$
(a) Long Service Leave			
Balance brought forward		138,952	123,143
<b>Add</b> Additional provision		32,426	15,809
Balance at end of year		171,378	138,952
(b) Maintenance of Premises			
Balance brought forward		40,000	58,500
<b>Less</b> Amount utilised		18,412	16,750
		21,588	41,750
<b>Less</b> Excess Provision written back		—	1,750
Balance at end of year		21,588	40,000
(c) Touring Commitment			
Balance brought forward		—	50,000
<b>Less</b> Provision written back		—	50,000
Balance at end of year		—	—
(d) Provision for Sick Leave			
Amount previously provided		90,000	90,000
Balance at end of year		90,000	90,000
		<b>\$282,966</b>	<b>\$268,952</b>

NOTE 7 FUNDS FOR SPECIAL PURPOSES		Balance 1.1.80	Grant	Net Expenditure	Balance 31.12.80
(i) Australia Council		\$	\$	\$	\$
(a) <b>Special Grants</b>					
J. Adcock	—	532	532	—	—
Busybodies Dance Co.	—	4,000	4,000	—	—
K. Chan	—	2,000	2,000	—	—
Circus Australia	—	15,000	15,000	—	—
Circus Australia	—	5,000	5,000	—	—
Circus Australia	—	20,000	20,000	—	—
C. Clifford	—	2,500	2,500	—	—
R. Cramphorn	—	99,800	99,800	—	—
P. S. Curtis	—	11,000	7,500	3,500	3,500
Dance Ensemble—					
(J. Carroll)	—	5,000	5,000	—	—
J. C. Friedl	—	2,000	2,000	—	—
A. Gennaro	—	14,850	14,850	—	—
G. Heredia	—	2,100	2,100	—	—
G. Heredia	—	900	900	—	—
G. Hooke	500	—	500	—	—
J. Hope	—	2,625	2,362	263	263
International Theatre Institute	—	1,500	—	1,500	1,500
International Theatre Institute	—	2,000	2,000	—	—
P. Jordan	—	1,500	1,500	—	—
C. Kemp	—	62,865	56,211	6,654	6,654
E. Knight	—	1,667	1,667	—	—
E. Knight	—	833	833	—	—
E. Knight	—	1,880	458	1,422	1,422
Carried Forward	500	259,552	246,713	13,339	13,339



# NOTES TO AND FORMING PART OF THE ACCOUNTS CONTINUED

NOTE 7 FUNDS FOR SPECIAL PURPOSES (CONT'D)	Balance 1.1.80	Grant	Net Expenditure	Balance 31.12.80
	\$	\$	\$	\$
Brought forward	500	259,552	246,713	13,339
B. Lee	2,000	—	2,000	—
M. Marcourt	—	2,500	2,500	—
L. Marinos	—	10,000	10,000	—
J. Mignon	—	2,900	2,900	—
W. Morley	1,700	—	1,700	—
M. Mullins	17,500	—	17,500	—
M. Mullins	—	5,000	5,000	—
M. Mullins	—	14,000	9,500	4,500
R. Nevin	—	2,000	2,000	—
T. O'Connell	(36,000)	—	36,000)	—
T. O'Connell	(33,299)	—	32,861)	438
M. Powell	—	3,500	3,500	—
J. Tate	148	—	148	—
P. Thibaudeau	—	3,700	3,700	—
Margaret Walker Dance Centre	—	1,200	1,200	—
Margaret Walker Dance Centre	—	1,000	1,000	—
Margaret Walker Dance Centre	—	5,000	5,000	—
Margaret Walker Dance Centre	—	5,000	5,000	—
I. Watson	—	2,000	2,000	—
	<u>\$91,147</u>	<u>\$317,352</u>	<u>\$390,222</u>	<u>\$18,277</u>
(b) <b>Special Deposits</b> Amounts held in respect of completed entrepreneurial activities, consultancy fees and other special services	6,731	—	6,645	86
(ii) <b>N.S.W. Theatre of the Deaf</b>				
(a) Australia Council	7,233	45,500		
(b) N.S.W. Government		5,400	63,133	—
(c) Other Special Deposits	5,000			
		<u>50,900</u>	<u>63,133</u>	
(iii) <b>Other Specific Grants and Funds</b>	268	3,062	2,890	440
Total Amount held for Special Purposes	<u>\$110,379</u>			<u>\$18,803</u>
NOTE 8 <b>COMMITMENT FOR CAPITAL EXPENDITURE</b>				
Purchase of Office Equipment and Scenery Curtains \$6,282, 1979 \$Nil.				



# NOTES TO AND FORMING PART OF THE ACCOUNTS CONTINUED

NOTE 9 GRANTS	1980	1979
	\$	\$
Actors Company Ltd.	—	4,500
Adelaide Festival Centre Trust	2,802	29,900
Adelaide Festival of Arts Inc.	9,047	54,865
Arts Council of Australia (A.C.T.) Division	—	2,700
Arts Research Training & Support Ltd.	48,900	41,950
Astra Chamber Music Society	13,000	6,000
Australian Ballet School	550	100
Australian College of Entertainers	1,850	—
Australian Intersociety Choral Societies Association	10	—
Australian Music Centre Ltd.	—	750
Australian National Memorial Theatre Ltd.	5,000	—
Australian National Playwrights Conference	3,200	2,535
Australian Opera Auditions	50	—
Australian Opera Company	210,058	209,657
Australian Sentic Association	—	2,000
Australian Youth Performing Arts Association	600	—
Braeside Music & Drama Ltd.	50,000	—
Brisbane Actors Company	—	1,000
Brisbane Arts Theatre	100	1,025
Brisbane Community Arts Centre Ltd.	7,600	—
Brisbane Warana Festival Ltd.	7,092	7,775
Miss H. Brookman (to study Drama)	—	500
Cairns Youth Orchestra	50	—
Canberra Opera Society Inc.	250	—
Canberra Youth Orchestra Society Inc.	1,975	—
Mr. R. Cheek (to study Performing Arts)	—	1,000
City of Sydney Cultural Council	2,013	1,480
Cladan Cultural Exchange Institute of Australia	30,010	10,000
Mr. G. Cox (to study Organ and Harpsichord)	1,000	—
Miss M. Dale (to study Opera)	—	1,000
Dance Concert Limited	—	1,000
Darling Downs Broadcasting Society	1,000	3,050
Darwin Theatre Group Inc.	700	—
Miss A. Demidowicz (to study Mime)	—	1,000
Designers Association in The Performing Arts	2,000	—
Miss K. Donovan (to study Ballet)	—	1,000
Ensemble Theatre Productions Pty. Ltd.	1,205	120
Ethnic Broadcasting Association of Queensland	—	75
Festival of Perth	7,500	—
Friends of The Australian Ballet	—	350
Friends of The Australian Opera Ltd.	955	200
Friends of the Barrenjoey Band	136	—
Friends of the Conservatorium—Newcastle	3,035	156
Friends of the State Opera of South Australia	—	10
Geelong & District Cultural Institute	72,115	85,170
Gold Coast Little Theatre	100	—
Grin & Tonic Theatre Troupe	1,000	—
Miss A. Hoban (to study Performing Arts—Marketing)	—	1,000
Carried forward	484,903	471,868



# NOTES TO AND FORMING PART OF THE ACCOUNTS CONTINUED

NOTE 9 GRANTS (CONT'D)		1980	1979
		\$	\$
	Brought forward	<b>484,903</b>	471,868
Hole in The Wall Theatre		—	4,904
Hoopla Theatre Foundation Ltd.		<b>6,790</b>	3,290
Mr. R. L. Howell (to study Opera)		<b>1,000</b>	—
Hunter Valley Theatre Company Ltd.		<b>15,622</b>	17,605
International Trombone Association		<b>1,205</b>	—
Mr. P. Jordan (to study Opera/Music Theatre)		<b>1,000</b>	—
King O'Malley Theatre Company		<b>5,000</b>	—
Mrs. J. Kolecany (to study Orchestral Administration)		—	1,000
Leonine Consort		<b>790</b>	2,383
Marian Street Theatre Ltd.		<b>200</b>	1,220
Marionette Theatre Australia Ltd.		<b>3,550</b>	—
Melbourne Youth Music Council		<b>25</b>	—
Mildura Eisteddfod Society		<b>500</b>	—
Musica Viva Australia		<b>4,590</b>	1,135
Music Broadcasting Society of NSW Co-operative Ltd.		<b>10,774</b>	1,500
Music Broadcasting Society of Queensland Ltd.		<b>171</b>	1,825
Musicological Society of Australia		—	200
National Music Camp Association		<b>1,545</b>	209
National Theatre Company Inc.		<b>1,150</b>	150
Nepean Valley Society for the Arts Ltd.		<b>1,000</b>	1,715
New South Wales Theatre of The Deaf		—	100
Nimrod Street Theatre Company Ltd.		<b>5,500</b>	500
Opera Foundation Australia		<b>12,000</b>	5,000
Miss C. Packard (to study Mime)		<b>500</b>	—
Parramatta Performing Arts Centre		<b>210</b>	155
Pipi Storm Children's Circus		—	4,000
Popular Theatre Troupe		<b>100</b>	—
Miss M. Powell (to study Music)		<b>2,500</b>	—
Mr. D. J. Price (to study Fine Arts)		<b>1,000</b>	—
Progressive Music Broadcasting Association		<b>480</b>	—
Queensland Children's Theatre		—	20
Queensland Light Opera Company		<b>1,080</b>	3,560
Queensland Marionette Theatre Ltd.		<b>150</b>	8,000
Queensland Modern & Contemporary Dance Company		<b>23,900</b>	—
Queensland Opera Company		<b>10,350</b>	—
Queensland Theatre Company		<b>5,320</b>	16,000
Queensland Youth Orchestra Council		<b>42,285</b>	20
Miss J. Refshauge (to study Fine Arts)		<b>3,000</b>	—
St. Stephen's Church for Monday Music		<b>2,295</b>	3,225
Shopfront Theatre for Young People Co-operative Ltd.		—	11,100
State Opera of South Australia Inc.		<b>7,310</b>	18,030
State Theatre Company of South Australia		—	12,901
Miss L. M. Streat (to study Ballet)		—	1,000
Sydney Committee Ltd.		<b>23,050</b>	30,670
Sydney Dance Company		<b>350</b>	13,200
Sydney International Piano Competition		<b>11,387</b>	4,000
Sydney Philharmonia Society Ltd.		<b>1,055</b>	—
Sydney Youth Orchestra Association Ltd.		<b>2,424</b>	25
	Carried forward	<b>696,061</b>	640,510



# NOTES TO AND FORMING PART OF THE ACCOUNTS CONTINUED

NOTE 9 GRANTS (CONT'D)		1980	1979
		\$	\$
	Brought forward	696,061	640,510
Tasmanian Arts Council		5,000	—
Tasmanian Theatre Company		—	10,000
Dr. M. Thiersch (to attend Theatre Conference)		—	350
Mr. S. Thompson (to study Theatre Administration)		2,000	—
Twelfth Night Theatre Company		—	4,000
Mr. J. Underwood (to study Violin)		1,000	—
Victorian Ministry for the Arts		—	2,000
Victoria State Opera		19,450	6,950
West Australian Ballet Company Inc.		4,680	9,215
West Australian Opera Company Inc.		2,500	400
West Gippsland Regional Arts Centre		47,259	16,421
Woden Valley Youth Choir Inc.		315	—
Yass Music Club		—	400
Young Musicians Trust Inc.		713	—
		<u>\$778,978</u>	<u>\$690,246</u>
NOTE 10 FINANCIAL RESULT		1980	1979
		\$	\$
<b>Surplus for the year has been determined after: -</b>			
(a) Including as Income: -			
Dividends received from other Corporations		10,623	9,725
Surplus from Sale of Shares		6,919	—
Profit from Sale of Fixed Assets		—	1,291
Excess Provision for Doubtful Debts		—	1,881
(b) Charging as expenses under the various departmental activities: -			
Auditors' remuneration for the Audit of the Company's Accounts (no other benefits were received by the Auditors)		25,351	25,201
Depreciation and Amortisation of Fixed Assets		35,361	20,908
Interest paid to non-related Corporations		2,562	1,832
Provision for Long Service Leave		32,426	15,809
Loss on Sale of Fixed Assets		3,966	—
Bad Debts (including amounts written off against provision)		2,331	12,691
(c) Including as Abnormal Income: -			
Provision for Touring Commitment written back		—	50,000



## ELIZABETHAN TRUST ORCHESTRAS

The Orchestral Council, which operates as part of the Trust, continued to function through the year 1980 with the same personnel as in 1978 and 1979:-

Sir David Griffin	— A Director of the Trust
Mr. D. A. Mortimer	— A Director of the Trust
Mr. W. D. Reid	— Director of Music
Mr. A. Hubbard	— Elizabethan Sydney Orchestra
Mr. M. Stead	— Elizabethan Melbourne Orchestra

The Elizabethan Melbourne Orchestra marked its growing status in the musical world as a result of the performance of "Die Meistersinger von Nürnberg". In the process, the Melbourne Orchestra established a friendly rivalry between its members and the Elizabethan Sydney Orchestra, as a result of which the standard of both orchestras has continued to improve. This improvement has not gone unnoticed by music critics and others qualified to judge.

During 1980, the already heavy touring commitment of the Melbourne Orchestra was further increased when The Australian Ballet launched its Dancers Company. It is pleasing to report that the increased touring has in no way resulted in a lowering of the musical standard.

A further commitment undertaken and planned in 1980, although not put into effect until March, 1981, was the split tour by The Australian Opera during which approximately one-half of the Elizabethan Melbourne Orchestra accompanied its performances in Brisbane, whilst the other half was responsible for those performances in Adelaide. The intricate negotiations involving the allocation of musicians to each orchestra, the engagement of casual musicians and the consequent interstate travel involved considerably increased the already heavy workload of the Orchestra's administration staff. At the time of writing this report, the split tour arrangements have been successful.

The rehearsal and performance schedules of the Orchestras for 1980 were:-

	Re- hearsals	Perform- ances	Total
<b>Sydney Orchestra</b>			
The Australian Ballet	61	116	177
The Australian Opera	126	123	249
	187	239	426
<b>Melbourne Orchestra</b>			
The Australian Ballet	74	97	171
The Australian Opera	111	73	184
	185	170	355

## Elizabethan Sydney Orchestra

During the year this Orchestra accompanied The Australian Opera's productions of:-

Lucia di Lammermoor	Rigoletto
The Magic Flute	Katya Kabanova
Nabucco	The Barber of Seville
The Tales of Hoffmann	Fra Diavolo
Manon Lescaut	Boris Godunov
I Masnadieri	A Midsummer Night's Dream

Accompaniment of performances given by The Australian Ballet by this Orchestra included productions of:-

Pineapple Poll	Threshold
Graduation Ball	Beyond Twelve
Scheherazade	Ballet Imperial
Raymonda	Anna Karenina
Cinderella	The Three Musketeers

The Trust's Director of Music, Mr. William Reid, conducted performances of The Tales of Hoffmann, Manon Lescaut and A Midsummer Night's Dream.

## Elizabethan Melbourne Orchestra

In 1980 this Orchestra accompanied The Australian Ballet and the Dancers of The Australian Ballet in productions of:-

Raymonda	Graduation Ball
Las Hermanas	Scheherazade
Pineapple Poll	Threshold
Symphony in D	Beyond Twelve
Giselle	Ballet Imperial
Anna Karenina	Swan Lake
Les Sylphides	Cinderella

Accompaniment of performances by The Australian Opera included its productions of:-

The Girl of the Golden West	The Abduction from the Seraglio
Don Giovanni	A Midsummer Night's Dream
Falstaff	Lucia di Lammermoor
The Magic Flute	Rigoletto
La Traviata	Boris Godunov
Patience	

The cities toured by this Orchestra included Perth, Adelaide, Brisbane, Canberra and Newcastle.

## Chamber Group

The Elizabethan Sydney Chamber Group gave another successful series of six recitals at Chalwin Castle which involved a number of musicians from the Sydney Orchestra who played music composed by Dvorak, Brahms, Mozart, Schubert, Vanhal, Bartok, Saint-Saens, Doppler Brothers, Grieg, Vivaldi, Britten and Haydn.



THE AUSTRALIAN ELIZABETHAN THEATRE TRUST

**THE ELIZABETHAN TRUST ORCHESTRAS  
STATEMENT OF INCOME AND EXPENDITURE**

FOR THE YEAR ENDED 31st DECEMBER, 1980

	NOTES	1980	1979
<b>INCOME</b>		\$	\$
Subsidies			
Australia Council		2,300,000	2,131,000
State Governments		397,000	387,000
		<b>2,697,000</b>	2,518,000
Orchestral Augmentation Fees		196,741	363,031
Interest		6,825	—
Sundry Income		—	187
		<b>2,900,566</b>	2,881,218
<b>EXPENDITURE</b>			
Accounting, Administration, Rent and Industrial Services		48,000	48,000
Audit Fees—Audit of the Accounts (no other benefits were received by the Auditors)		6,300	6,700
Depreciation		17,933	10,274
Fares, Freight and Travelling		142,159	124,380
Grant		—	50,000
Production and Theatre		65,699	47,342
Salaries, Fees and Allowances including Superannuation, Long Service Leave and Statutory			
Oncosts		2,615,152	2,540,871
Sundry Expenses		20,412	15,869
		<b>2,915,655</b>	2,843,436
<b>OPERATING SURPLUS (DEFICIT) FOR THE YEAR</b>	2	<u>† (\$15,089) /</u>	<u>\$37,782</u>

**NOTES**

- (1) This Statement of Income and Expenditure is to be read in conjunction with the Consolidated Accounts and Notes of The Australian Elizabethan Theatre Trust for the year ended 31st December, 1980.
- (2) The Notes refer to those forming part of the abovementioned consolidated accounts.



## STATEMENT BY THE PRINCIPAL ACCOUNTING OFFICER

As the officer in charge of the preparation of the accompanying Balance Sheet as at 31st December, 1980 and the accounts for the year then ended, I hereby state that, to the best of my knowledge and belief, such accounts when read in conjunction with the notes thereto, give a true and fair view of the matters required to be dealt with therein by Section 162 of the Companies Ordinance 1962.

Signed at Sydney this Thirteenth day of April, 1981.

G. TURNER 589.90321 D. F. Grace

## DIRECTORS' STATEMENT

In the opinion of the Directors:

- (a) the accompanying Statement of Income and Expenditure when read in conjunction with the notes thereto is drawn up so as to give a true and fair view of the results of the company for the year ended 31st December, 1980.
- (b) the accompanying Balance Sheet when read in conjunction with the notes thereto is drawn up so as to give a true and fair view of the state of affairs of the company as at that date.

Signed at Sydney this Thirteenth day of April, 1981 in accordance with a resolution of the Board of Directors.

David A. Mortimer  
Director

David Griffin  
Director

MEMPH-104HP  
6351

## AUDITORS' REPORT TO MEMBERS OF THE AUSTRALIAN ELIZABETHAN THEATRE TRUST

In our opinion:

- (a) the attached Balance Sheet and Statement of Income and Expenditure which have been prepared under the historical cost convention with certain modifications as stated in Note 1 to the Accounts are properly drawn up in accordance with the provisions of the Companies Ordinance, 1962, and so as to give a true and fair view of:
  - (i) the state of affairs of the Company at 31st December, 1980 and of the results of the Company for the year ended on that date; and
  - (ii) the other matters required by Section 162 of the Ordinance to be dealt with in the Accounts;
- (b) the accounting records and other records, and the registers required by that Ordinance to be kept by the Company have been properly kept in accordance with the provisions of that Ordinance.

Pannell Kerr Forster  
D. N. James  
Chartered Accountants

21st April, 1981.





You are a Good Man  
Hattie Brown.



